

**Catholic High School (Primary)**  
**Primary 5 Science 2024**  
**Weighted Assessment 1**

Name: \_\_\_\_\_ (   )

Class: Pri. 5 - \_\_\_\_\_

Date: 21 February 2024

Parent's Signature: \_\_\_\_\_

MARKS	25
-------	----

**Booklet A (8 × 2 marks)**

For each question from 1 to 8, four options are given. One of them is the correct answer. Make your choice (1, 2, 3 or 4). Write its correct number in the brackets provided.

(16 marks)

- 1 Four pupils made statements about the sexual reproduction in humans.

Alice Many eggs are fertilised by one sperm.

Bala Fertilisation happens when the sperm fuses with the egg.

Chris The fertilised egg develops into a baby in the womb of the female reproductive system.

Which pupil(s) was/were **not** correct?

(1) Alice only

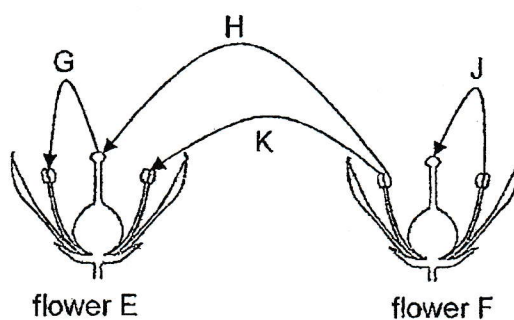
(2) Bala only

(3) Chris and Bala only

(4) Alice and Chris only

(   )

- 2 The diagram shows flower E and flower F of the same type.



Which arrows show pollination taking place?

- (1) H and K only
  - (2) H and J only
  - (3) G and K only
  - (4) G and H only
- (      )

- 3 Gayathri placed an equal number of similar green bean seeds into four similar containers, W, X, Y and Z. Each container was exposed to different conditions.

A tick (✓) in the table indicates that the condition was present.

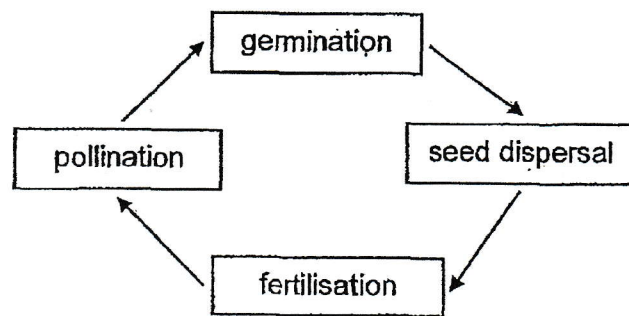
Container	Conditions			
	air	water	light	temperature at 28°C
W				
X				
Y				
Z				

In which container will the seeds germinate?

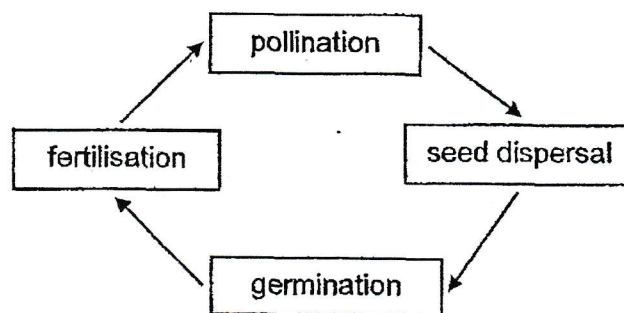
- (1) W
  - (2) X
  - (3) Y
  - (4) Z
- (      )

- 4 Which of the following shows the correct sequence of the reproduction of a flowering plant?

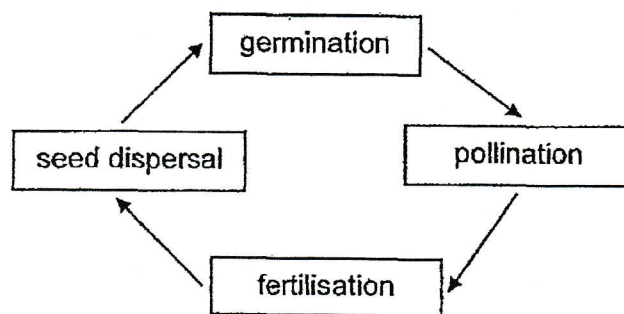
(1)



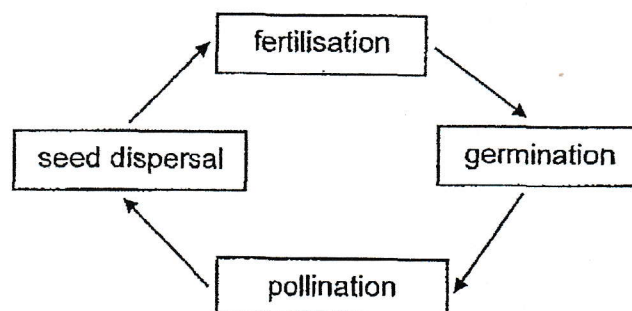
(2)



(3)

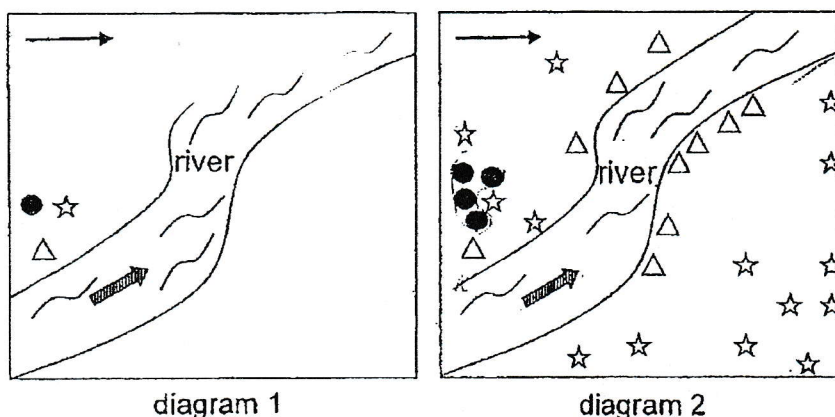


(4)



( )

- 5 Noah observed plants, R, S and T, growing on a piece of land as shown in diagram 1. After a few months, he visited the same piece of land and made the observation shown in diagram 2.



**Key**

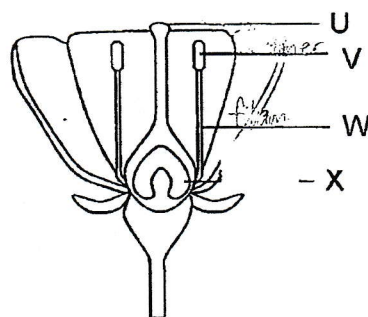
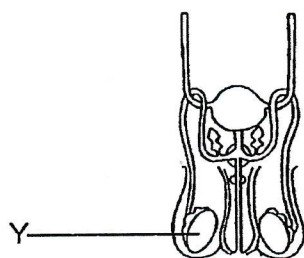
- direction of water flow       $\triangle$  plant R  
 direction of wind       $\star$  plant S  
 plant T

Which of the following most likely represent the characteristics of the fruits of plants, R, S and T?

	$\triangle$ plant R	$\star$ plant S	$\bullet$ plant T
(1)	fibrous husk that traps air	juicy flesh	pod-like structures
(2)	feathery structures	pod-like structures	juicy flesh
(3)	fibrous husk that traps air	feathery structures,	pod-like structures
(4)	feathery structures	fibrous husk that traps air	juicy flesh

(      )

6 Study the diagrams.



Which part of the flower, U, V, W or X, has the same function as part Y?

- (1) U
- (2) V
- (3) W
- (4) X

( )

7 The table shows the characteristics of Sam's parents and himself.

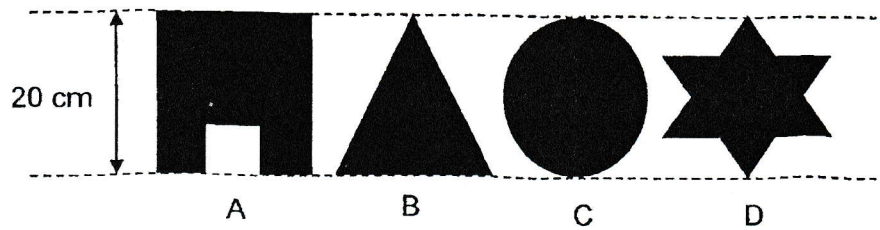
	Hitchhiker's thumb	Able to roll tongue	Long fingernails
Sam's father	yes	no	yes
Sam's mother	no	yes	no
Sam	yes	yes	yes

How many characteristics did Sam inherit from each of his parents?

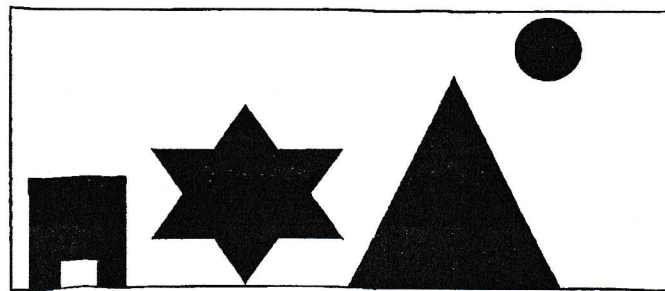
Number of characteristics inherited from each parent		
	father	mother
(1)	one	one
(2)	one	two
(3)	two	one
(4)	two	two

( )

- 8 The diagram shows four cut-outs, A, B, C and D, from a piece of cardboard.



The shapes were used to create a scene in a shadow puppet show as shown. The positions of both the light source and the screen were fixed.



Which of the following shows the correct order of the cut-outs from the nearest to the screen to the furthest from the screen?

	nearest to screen			furthest from screen
(1)	B	D	A	C
(2)	D	B	C	A
(3)	D	C	A	B
(4)	C	A	D	B

( )

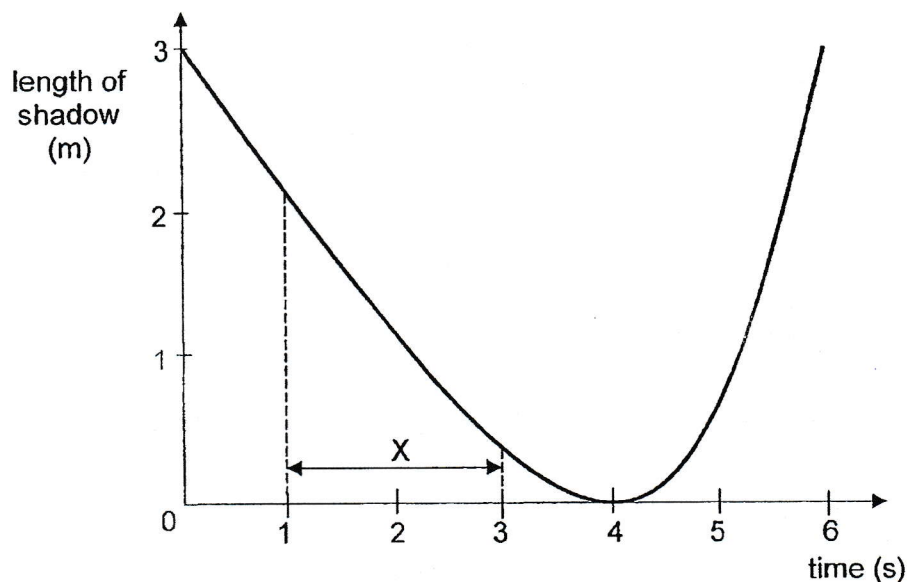


**Booklet B (9 marks)**

For questions 9 to 11, write your answers in this booklet.

The number of marks available is shown in brackets [ ] at the end of each question or part question. (9 marks)

- 9 The graph shows how the length of Shima's shadow changes over a period of time as she walks in a straight line near a street lamp at night.



- (a) Explain how a shadow is formed. [1]

---

---

- (b) Is Shima walking towards or away from the street lamp during period X? Give a reason for your answer. [1]

---

---

- (c) Shima saw a cat while walking past the street lamp. Explain how she was able to see the cat. [1]

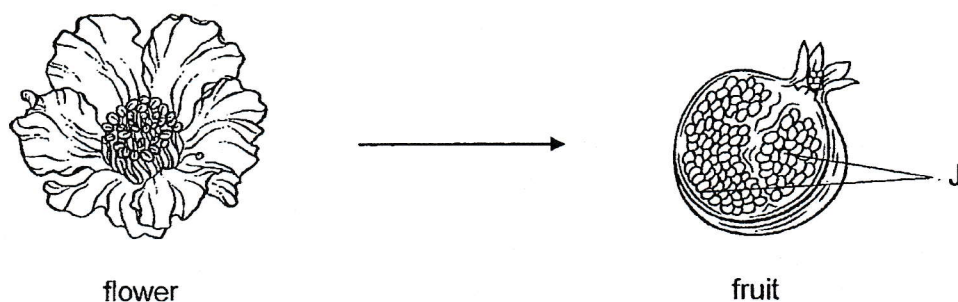
---

---

(Go on to the next page)

SCORE	<div style="border: 1px solid black; width: 100px; height: 100px; position: relative;"><div style="position: absolute; top: 0; right: 0; width: 50%; height: 50%; border-left: 1px solid black; border-bottom: 1px solid black;"></div><div style="position: absolute; bottom: 0; right: 0; width: 20px; height: 20px; text-align: center; line-height: 20;">3</div></div>
-------	--

- 10 The diagram shows a fruit formed from the flower of plant P. The fruit of plant P has been cut open.



- (a) State what fertilisation is. [1]

---

---

- (b) State the part of the flower that J developed from. [1]

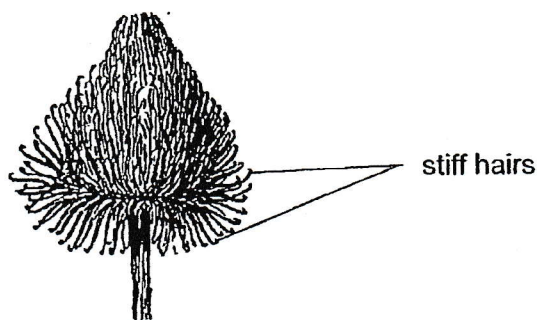
---

(Go on to the next page)

SCORE	<div></div>
-------	-------------



11 The diagram shows fruit A.



fruit A

(a) State the method of dispersal for the seed of A. [1]

---

(b) Describe how the seed of A can be dispersed over a wide area. [1]

---

---

(c) Explain why it is an advantage for the seed of A to be dispersed over a wide area. [2]

---

---

---

End of Paper

SCORE	4
-------	---

SCHOOL : CATGOLIC HIGH SCHOOL  
LEVEL : PRIMARY 5  
SUBJECT : SCIENCE  
TERM : 2024 WA1

CONTACT :

Q1)	1
Q2)	2
Q3)	3
Q4)	3
Q5)	1
Q6)	2
Q7)	1
Q8)	4
Q9)	a)A shadow is formed when light shone on an object that is blocking it. b)She is walking towards the street lamp because the length of shadow decreases. This means that the light source is getting closer. c)Light shines on the cat and is reflected into Shima's eyes.
Q10)	a) Fertilisation is the process whereby the male reproductive cell fuses with the female reproductive cells. b) Owle
Q11)	a) Animal. b) The fruit has stiff hairs to cling onto the body covering of the animals. When they move from place to place, the seeds will drop off. c) So it can reduce overcrowding and competition of sunlight, warmth, nutrients and space.

Visit  
**FREETESTPAPER.com**

for more papers