



# RAFFLES GIRLS' PRIMARY SCHOOL

## PRIMARY 3 SCIENCE TOPICAL TEST 1 THEME : DIVERSITY LIVING THINGS AND NON-LIVING THINGS

Your score upon 30 marks	
Parent's signature	

Name: \_\_\_\_\_ Index No.: \_\_\_\_\_ Class: P3 Date: \_\_\_\_\_

### SECTION A (10 X 2 marks)

For each question from 1 to 10, four options are given. One of them is the correct answer. Make your choice (1, 2, 3 or 4). Shade the correct oval (1, 2, 3 or 4) on the Optical Answer Sheet (OAS) provided below.

1. Things are grouped together when they share some \_\_\_\_\_.

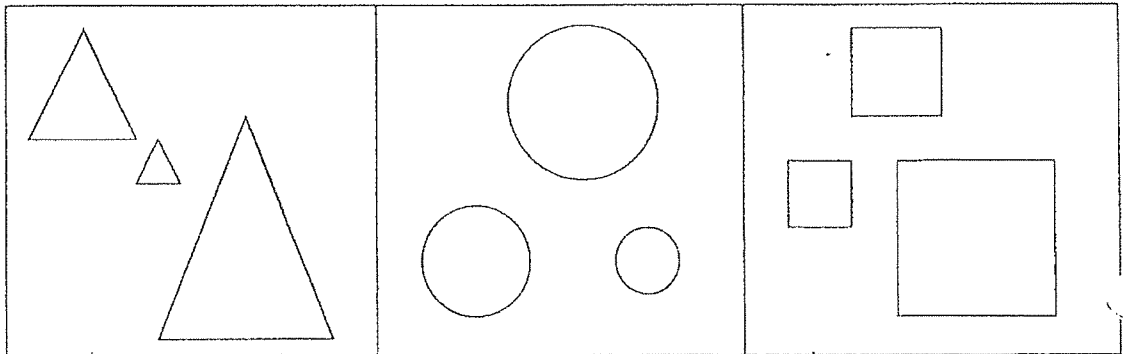
- |                                 |                                  |
|---------------------------------|----------------------------------|
| (1) similarities                | (2) differences                  |
| (3) similarities or differences | (4) similarities and differences |

2. We can compare things by their differences in \_\_\_\_\_.

- A size
- B shape
- C colour
- D texture

- |                     |                   |
|---------------------|-------------------|
| (1) A and B only    | (2) B and C only  |
| (3) A, C and D only | (4) A, B, C and D |

3. Some objects are grouped as shown below.



These objects are put together according to their \_\_\_\_\_.

- |            |             |
|------------|-------------|
| (1) sizes  | (2) colours |
| (3) shapes | (4) texture |

4. Which of the following are basic needs of all living things?

- A air
- B food
- C water
- D sunlight

- |                     |                     |
|---------------------|---------------------|
| (1) A and B only    | (2) B and C only    |
| (3) A, B and C only | (4) A, C and D only |

5. Which of the following statements show that a living thing responds to changes around it?

- A An elephant fans its ear to cool itself.
- B A dog hangs out its tongue on hot days.
- C The leaves of a rain tree close in the evening.
- D The bus moves when the driver drives it away.

- |                     |                     |
|---------------------|---------------------|
| (1) A and B only    | (2) A and C only    |
| (3) A, B and C only | (4) B, C and D only |

6. Living things such as animals move about to \_\_\_\_\_.

- A look for food
- B look for water
- C look for shelter
- D escape from danger

- |                  |                   |
|------------------|-------------------|
| (1) A and B only | (2) B and C only  |
| (3) C and D only | (4) A, B, C and D |

7. Which one of the following statements does not describe all living things?

- (1) They reproduce.
- (2) They respond to changes.
- (3) They need air, food and water.
- (4) They can make their own food.

8. Study the table below carefully. A tick (  $\checkmark$  ) indicates that a characteristic is observed and a cross ( X ) means the characteristics are not observed.

Things	characteristics		
	can grow	can reproduce	can move by itself
S	X	X	X
T	$\checkmark$	$\checkmark$	$\checkmark$

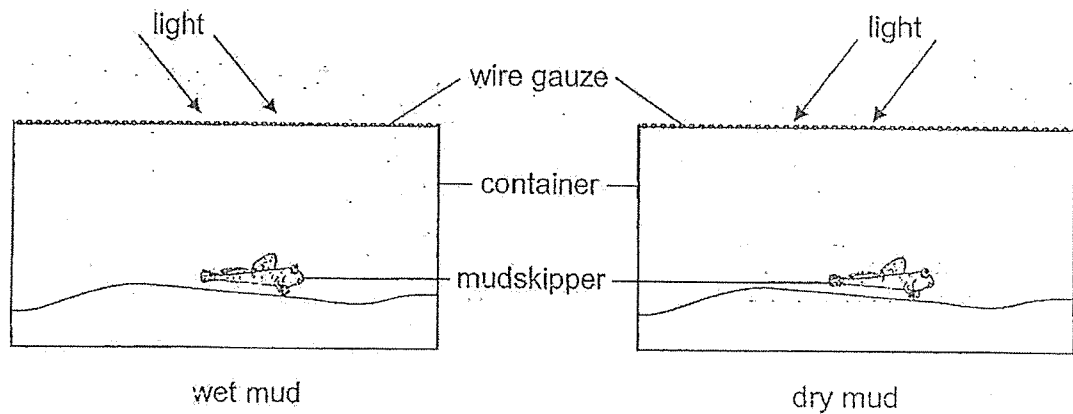
Based on the table, what do S and T represent?

	S	T
(1)	dog	ship
(2)	vase	ball
(3)	pen	rat
(4)	bee	parrot

9. Living things reproduce \_\_\_\_\_.

- (1) so that there will be enough food
- (2) so they can look after one another
- (3) so they will continue to grow bigger
- (4) so to ensure the survival of their own kind

10. Two mudskippers of the same size and breed were placed in identical containers. Each container had an equal amount of mud taken from the same swamp but the amount of water present in the mud was not the same.



The aim of this experiment is to find out if \_\_\_\_\_.

- (1) the mudskippers need air to survive
- (2) different amount of light affects the survival of the mudskipper
- (3) the mudskippers can stay away from the swamp where they used to live
- (4) different amount of water present in the mud affects the survival of the mudskipper

**SECTION B (10 marks)**

For questions 11 to 14, write your answers clearly in the spaces provided.

The number of marks available is shown in the brackets [ ] at the end of each question or part question.

---

11. Complete each of the following sentences with suitable letters to complete the word. [1]

(a) Both of the jackfruit and kiwi have rough skins.



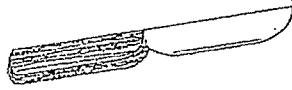

They can be grouped together because they have the same skin t \_ \_ \_ \_ \_ .

(b) A yellow paper clip and a yellow file are classified in the same group.

They can be grouped together because they have the same c \_ \_ \_ \_ \_ .

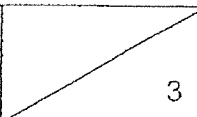
Score	<div></div>
-------	-------------

12. Ali was given a list of things (**NOT** drawn to scale) as shown below.

W 	X 
Y 	Z 

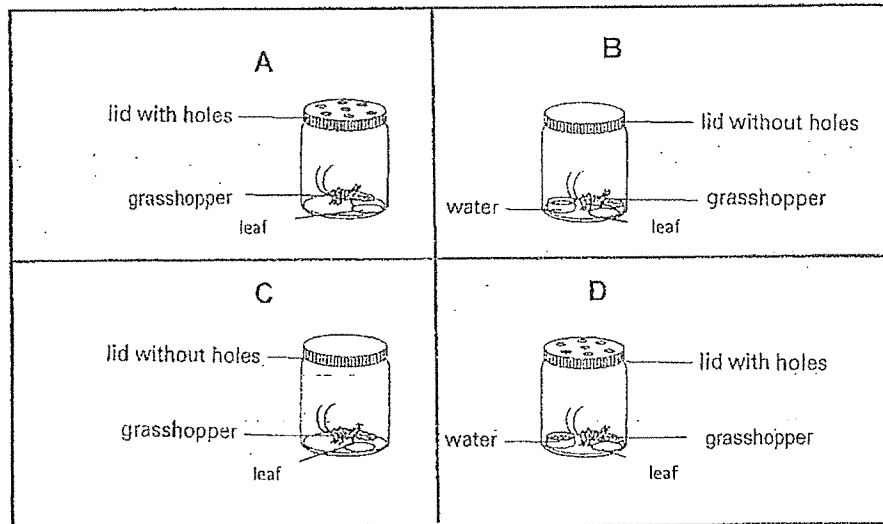
- (a) Based on their characteristics, group the things above into **TWO** different groups.
- (i) In the table below, write suitable **sub-headings** in the appropriate boxes (a) and (b), for each group of things. [2]
- (ii) Write letters **W, X** and **Y** **ONCE** only in the appropriate boxes. Letter **Z** has been written for you. [1]

Things	
(a) _____	(b) _____
Z	

Score	
-------	---

13. Isabel set up an experiment as shown below.

Isabel had four identical jars and she put a grasshopper into each jar and closed it with a different type of lid as shown in the diagrams below.



Based on the information above, answer the following questions:

- (a) To find out if a grasshopper needs water to stay alive, which two jars should Isabel use? Write letters A, B, C and/ or D only.

Jars \_\_\_\_\_ [1]

- (b) To find out if a grasshopper needs air to stay alive, which two jars should Isabel use? Write letters A, B, C and/ or D only.

Jars \_\_\_\_\_ [1]

- (c) Based on your answers in (a) and (b), what was Isabel trying to find out? [1]

She wanted to find out if \_\_\_\_\_ and \_\_\_\_\_ are needed for the grasshopper to survive.

Score	3
-------	---

14. Andy kept some adult guppies in 3 tanks, P, Q and R. He recorded the number of guppies in each tank in the table below in January and April.

	Tank P	Tank Q	Tank R
Number of guppies on 1st January	12	6	14
Number of guppies on 30th April	12	30	7

- (a) Which tank shows an increase in the number of guppies at the end of April? [1]

---

- (b) State the characteristic of living things shown in (a). [1]

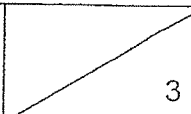
---

- (c) Andy observed that the number of guppies in Tank P did not increase at the end of April. Suggest a reason for this observation. [1]

---

---

- END OF PAPER -

Score -	
---------	---



# RAFFLES GIRLS' PRIMARY SCHOOL

## PRIMARY 3 SCIENCE SCIENCE TOPICAL TEST 2

THEME : DIVERSITY  
Animals, Plants, Fungi & Bacteria

Your score upon 30 marks	
Parent's signature	

Name: \_\_\_\_\_ Index No.: \_\_\_\_\_ Class: P3 Date: \_\_\_\_\_

### SECTION A (10 X 2 marks)

For each question from 1 to 10, four options are given. One of them is the correct answer. Make your choice (1, 2, 3 or 4). Shade the correct oval (1, 2, 3 or 4) on the Optical Answer Sheet (OAS) provided below.

**SECTION A (10 X 2 marks)**

For each question from 1 to 10, four options are given. One of them is the correct answer. Make your choice (1, 2, 3 or 4). Shade the correct oval (1, 2, 3 or 4) on the Optical Answer Sheet (OAS) provided on **page 1**.

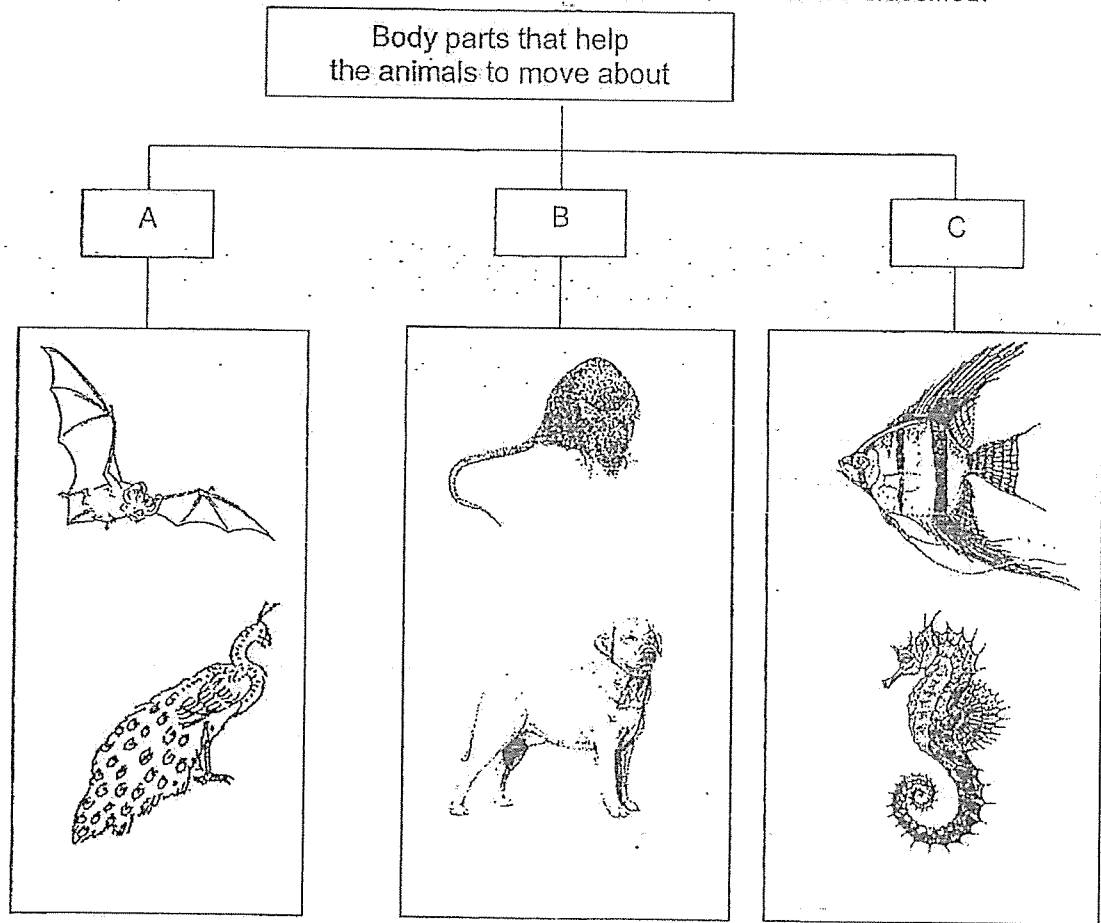
1. The classification table below shows how some animals are grouped based on a common characteristic.

Animals			
A	B	C	D
parrot	bat	guppy	ant
ostrich	cat	snake	cockroach
sparrow	kangaroo	crocodile	grasshopper

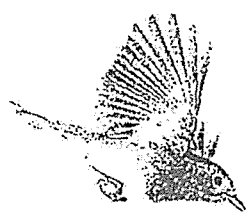
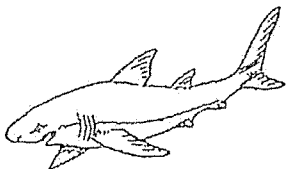
Based on the information above, which one of the following is used to classify these animals?

- (1) According to what they feed on
- (2) According to how they move about
- (3) According to how they feed on their food
- (4) According to the type of their body coverings

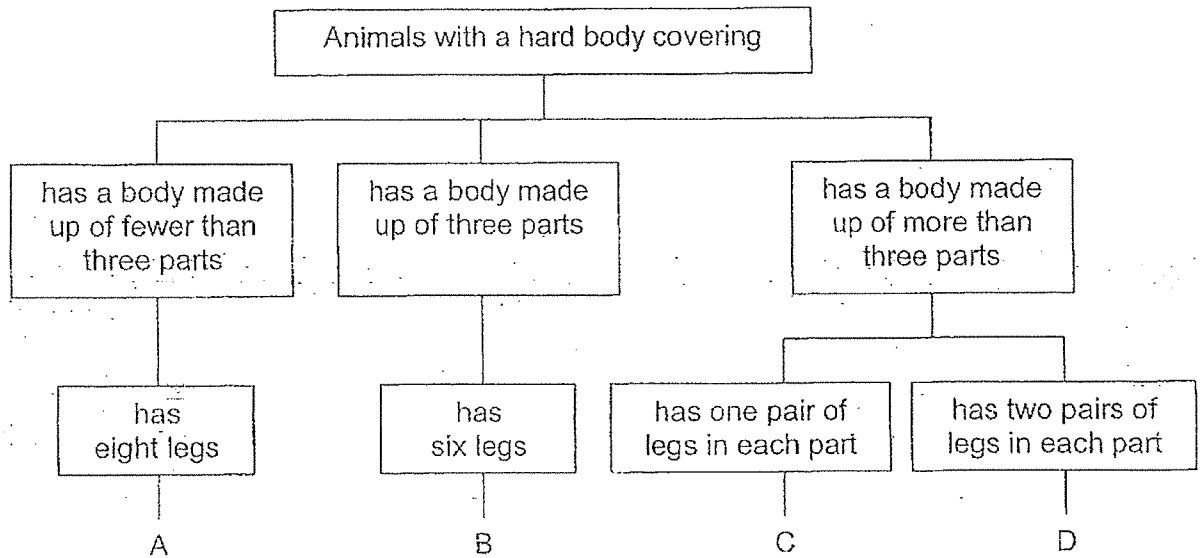
2. The classification chart below shows how some animals can be classified.



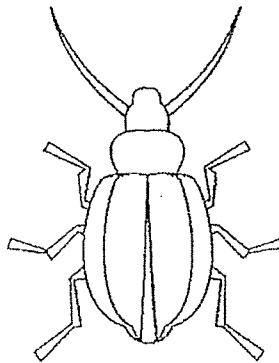
Which groups do the animals below belong to?

		
(1)	A	B
(2)	A	C
(3)	B	A
(4)	C	A

3. Animals with a hard body covering can be classified as shown below.



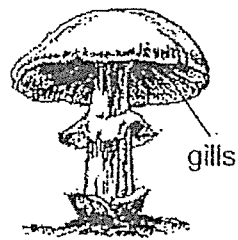
Devi found an animal and observed that it had a hard body covering.



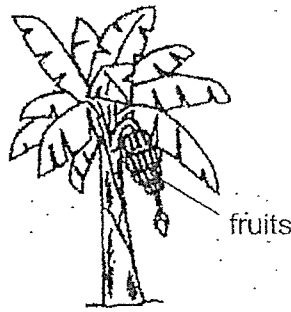
Which group, A, B, C or D, does this animal belong to?

- (1) A
- (2) B
- (3) C
- (4) D

4. Reina observed two types of organisms, A and B, as shown below.



organism A

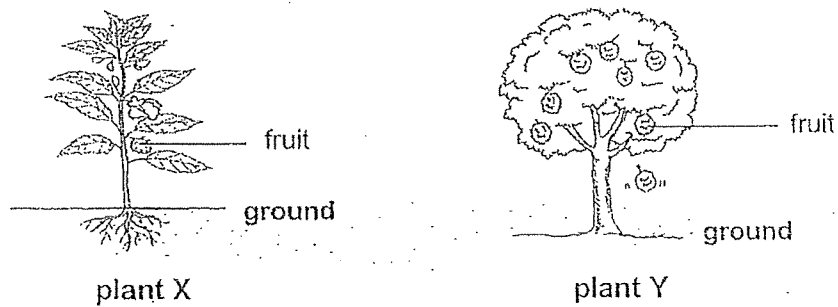


organism B

Based on the information above, which one of the following identifies the correct difference between these organisms A and B correctly?

	organism A	organism B
(1)	grows on land	grows in water
(2)	reproduces by spores	reproduces by seeds
(3)	produces flowers	does not produce flowers
(4)	cannot respond to changes around it	can respond to changes around it

5. Aminah saw plants X and Y in a park as shown below.



What are the similarities between both plants X and Y?

- A Both are land plants.
- B Both are non-flowering plants.
- C Both plants have strong stems.
- D Both plants reproduce by seeds.

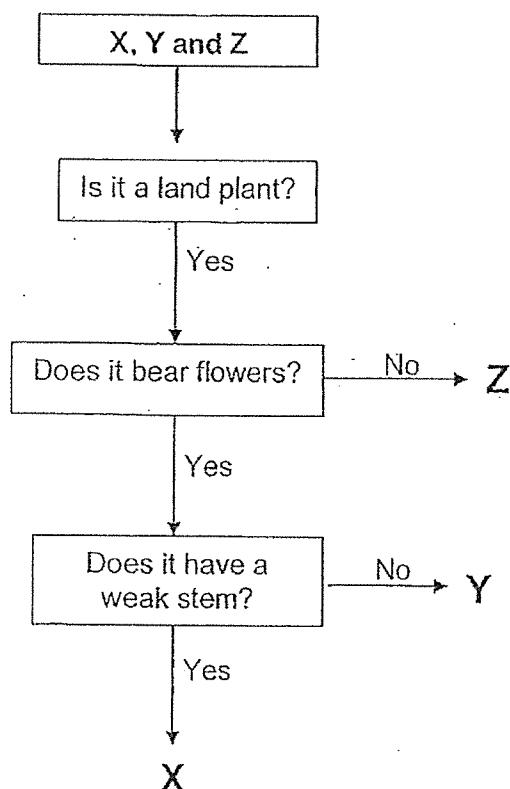
(1) - A and B only

(2) C and D only

(3) A, C and D only

(4) B, C and D only

Plants X, Y and Z are classified according to the flow chart below.



Based on the information above, answer questions 6 and 7.

6. Which of the following describe(s) plant Z correctly?

- A It bears flowers.
- B It grows on land.
- C It is a non-flowering plant.
- D It can stand upright without any support.

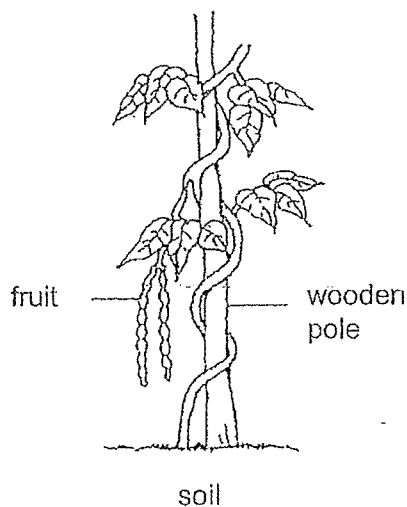
- |                  |                     |
|------------------|---------------------|
| (1) C only       | (2) A and D only    |
| (3) B and C only | (4) A, B and D only |

7. Which of the following describe both plants X and Y correctly?

- A Both are land plants.
- B Both have a weak stem.
- C Both are flowering plants.
- D Both reproduce by seeds.

- |                  |                     |
|------------------|---------------------|
| (1) A and B only | (2) B and D only    |
| (3) C and D only | (4) A, C and D only |

8. The picture below shows a plant which grows upright with the support of a wooden pole.



Based on your observations of the plant above, which of the following statements describe the plant?

- A It is a land plant.
- B It has a weak stem.
- C It is a flowering plant.
- D It reproduces by seeds.

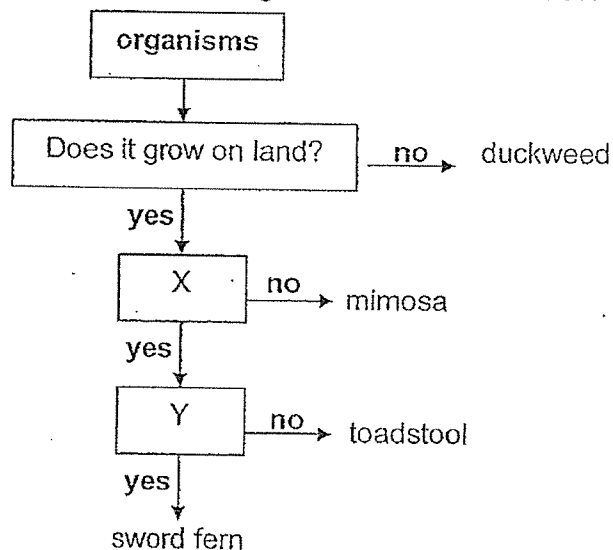
- |                     |                   |
|---------------------|-------------------|
| (1) A and D only    | (2) B and C only  |
| (3) A, C and D only | (4) A, B, C and D |

9. Which of the following statements about both fungi and bacteria are true?

- A Both groups can reproduce.
- B Both groups need air and water only.
- C Both groups cannot be seen with our naked eyes.
- D Both groups can respond to changes in their environments.

- (1) A and B only
- (2) A and D only
- (3) B and C only
- (4) C and D only

10. The flow chart below shows how some organisms are differentiated.



Based on the information above, which one of the following identifies the correct question in each of these boxes, X and Y?

	X	Y
(1)	Does it bear fruits?	Is it a non-flowering plant?
(2)	Does it bear flowers?	Does it reproduce from spores?
(3)	Is it a non-flowering plant?	Does it need food?
(4)	Does it reproduce from spores?	Does it make its own food?

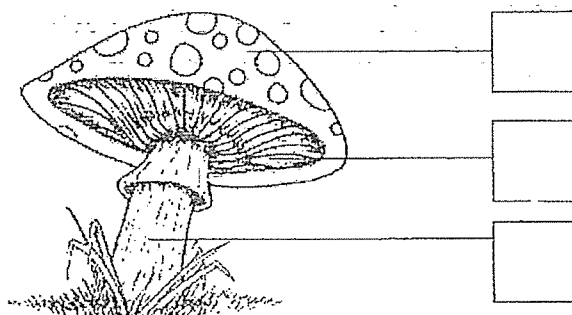
**SECTION B (10 marks)**

For questions 11 to 14, write your answers clearly in the spaces provided.

The number of marks available is shown in brackets [ ] at the end of each question or part question.

---

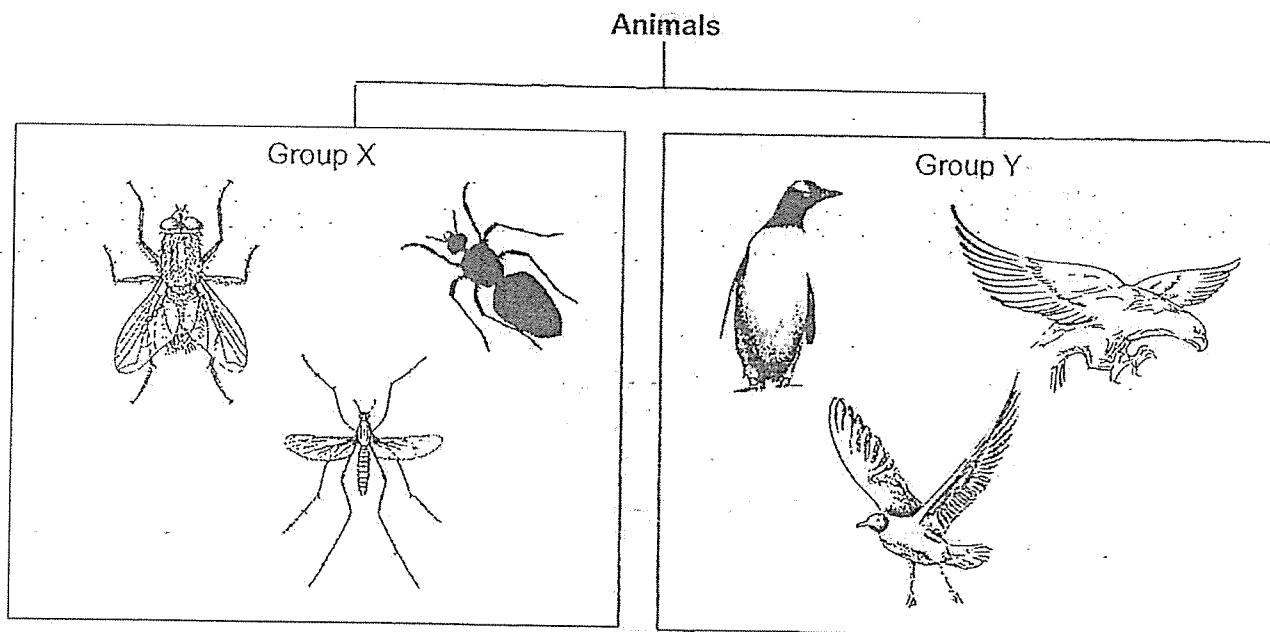
11. The diagram below shows a fungus.



Indicate with a tick (✓) in the correct box where the spores are found. [1]

Score	
	1

12. Some animals are classified in the following groups, X and Y:



Based on your observations of these animals, answer the following questions:

- (a) All the animals in group X have a common physical characteristic.  
State **one** common physical characteristic.

[1]

---



---

- (b) Compare the animals in groups X and Y.  
State one difference physical characteristic between these two groups of animals.  
(Do **NOT** compare their shapes, size and colour.)

[1]

---

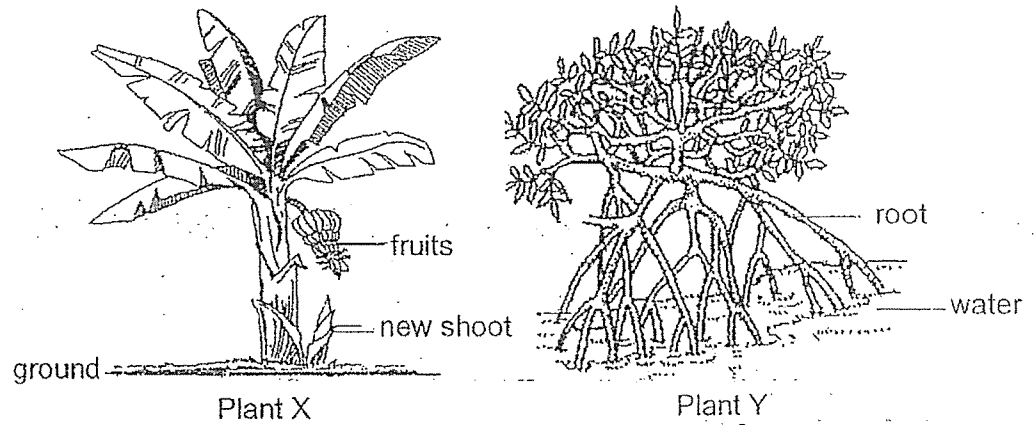
- (c) Write down the animal group for each of the following group:

[1]

X	
Y	

Score	3
-------	---

13. The pictures below show two different types of plants.



Based on your observations of these plants above, answer the following questions:

State 1 similarity and 1 difference between the plants.  
(Do **NOT** compare their shape or size.)

[2]

SIMILARITY	
DIFFERENCE	

14. State one characteristic of plants which differentiates them from animals.

[1]

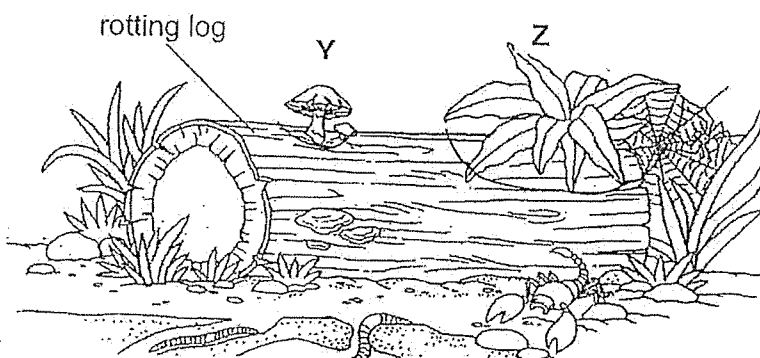
---



---

Score	3
-------	---

15. Organisms Y and Z are found growing on the rotting log as shown below.



A rotting log community

Based on your observations of the picture above, answer the following questions:

- (a) How does Y reproduce? [1]

---

- (b) How does Y get its food? [1]

---

- (c) Z belongs to a plant group which does **NOT** reproduce by seeds but can make food.

Name the plant group of Z. [1]

---

- END OF PAPER -

Score	<div style="border: 1px solid black; width: 100%; height: 100%; position: relative;"><div style="position: absolute; top: 0; right: 0; text-align: right;">3</div></div>

SCHOOL : RAFFLES FIRLS' PRIMARY SCHOOL  
 LEVEL : PRIMARY 3  
 SUBJECT : SCIENCE  
 TERM : 2023 TOPICAL TEST 1

### SECTION A

Q 1	Q2	Q3	Q4	Q5	Q6	Q7	Q8	Q9	Q10
1	4	3	3	3	4	4	3	4	4

### SECTION B


Q11)	<p>(a) They can be grouped together because they have the same skin texture.</p> <p>(b) They can be grouped together because they have the same color.</p>						
Q12)	<p>(a)</p> <table border="1"> <thead> <tr> <th colspan="2">Things</th></tr> <tr> <th>(a) Living Things</th><th>(b) Non-Living Things</th></tr> </thead> <tbody> <tr> <td>z</td><td>x y</td></tr> </tbody> </table>	Things		(a) Living Things	(b) Non-Living Things	z	x y
Things							
(a) Living Things	(b) Non-Living Things						
z	x y						
Q13)	<p>(a) Jar A and D</p> <p>(b) Jar B and D</p> <p>(c) To find out if water and air are needed for the grasshopper to survive</p>						
Q14)	<p>(a) Tank Q. As it has an increase in the number of guppies at the end of April</p> <p>(b) Living things reproduce to their own kinds</p> <p>(c) The guppies are all male/female and they cannot reproduce.</p>						

SCHOOL : RAFFLES FIRLS' PRIMARY SCHOOL  
 LEVEL : PRIMARY 3  
 SUBJECT : SCIENCE  
 TERM : 2023 TOPICAL TEST 2

### SECTION A

Q 1	Q2	Q3	Q4	Q5	Q6	Q7	Q8	Q9	Q10
4	2	2	2	3	3	4	4	2	4

### SECTION B

Q11)	
Q12)	<p>(a) All the animals in group X have three body parts</p> <p>(b) The animals in Group Y have two legs but all the animals in Group X have six legs</p> <p>(c) X: insects    Y : birds</p>
Q13)	<p>Similarity : Both plants have leaves</p> <p>Difference : X is a land plant but Y is a water plant</p>
Q14)	Plants make their own food but animals do not make their food
Q15)	<p>(a) Y reproduce spores</p> <p>(b) Y gets food by eating the dead or alive organism</p> <p>(c) Non-flowering plants</p>