



MAHA BODHI SCHOOL
2023 WEIGHTED ASSESSMENT 1
SCIENCE REVIEW 1
PRIMARY THREE

Name : _____ ()

Date : 2 May 2023

Class : Primary 3 _____

Duration : 40 min

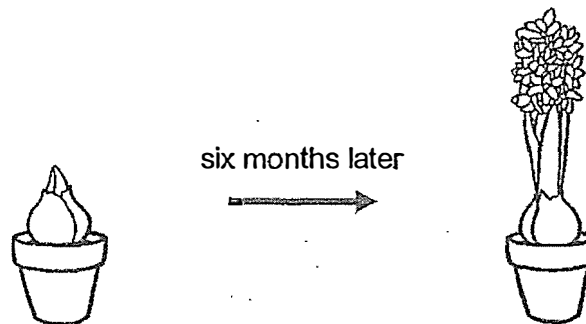
Marks: / 30

Parent's signature : _____

Section A : [8 x 2 marks = 16 marks]

For each question from 1 to 8, four options are given. One of them is the correct answer. Make your choice (1, 2, 3 or 4). **Write your answer in the bracket.**

1. James observed a plant six months apart as shown below.



Based on the pictures above, what characteristic of living things did he observe?

- (1) Living things grow.
- (2) Living things reproduce.
- (3) Living things respond to changes.
- (4) Living things need air, food and water to survive. ()

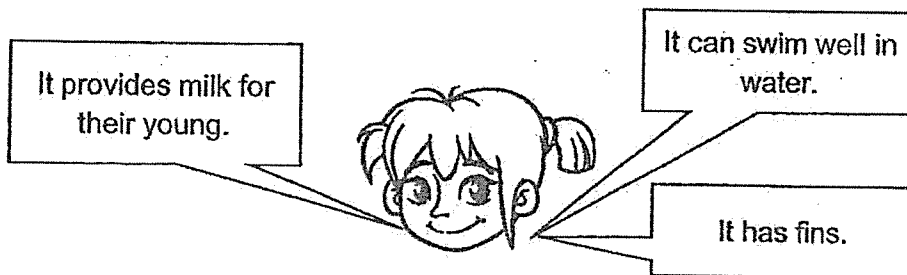
Marks : / 2

2. Which of the following statements is true about all plants?

- (1) All plants bear fruits.
- (2) All plants have flowers.
- (3) All plants reproduce by spores.
- (4) All plants make their own food.

()

3. Aliyah made the following statements about animal P.



Which group of animals does animal P belong to?

- (1) fish
- (2) insects
- (3) mammals
- (4) amphibians

()

4. The diagram below shows a mushroom.



How does it reproduce?


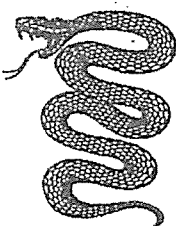

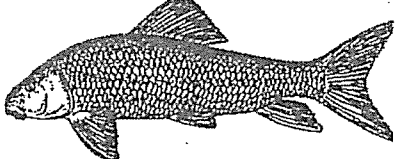
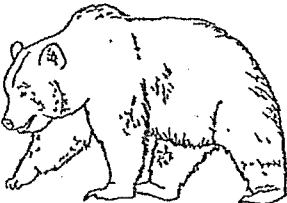
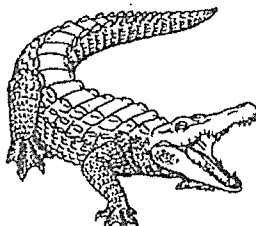
- (1) By gills
- (2) By pollen
- (3) By seeds
- (4) By spores

()

Marks :

/ 6

5. Study the animals shown in the table below.

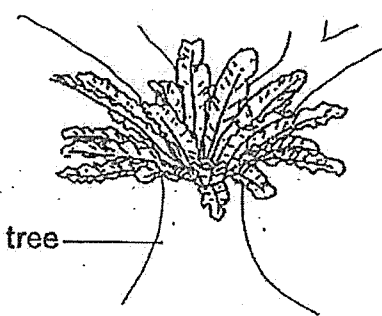
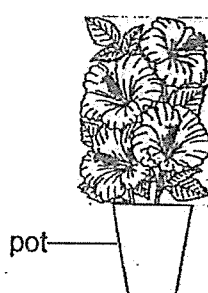
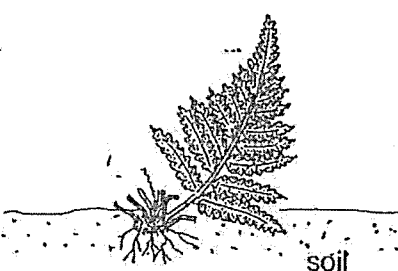
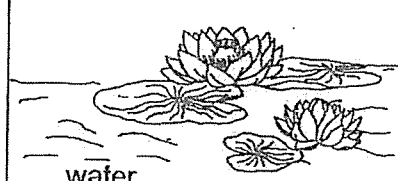
Group A	Group B
 cat	 snake
 bat	 fish
 bear	 crocodile

Which of the following pair of headings best represents group A and B above?

	Group A	Group B
(1)	Has hair	Has scales
(2)	Mammals	Reptiles
(3)	Lives on land	Lives in water
(4)	Breathes with lungs	Breathes with gills

Marks : / 2

6. Study the two groups of plants below.

Group C	Group D
<p>bird's nest fern</p>  <p>tree</p>	<p>hibiscus plant</p>  <p>pot</p>
<p>rabbit's foot fern</p>  <p>soil</p>	<p>water lily plant</p>  <p>water</p>

Which one of the following are suitable headings for C and D?

	Group C	Group D
(1)	Non-flowering plants	Flowering plants
(2)	Cannot makes its own food	Makes its own food
(3)	Bears fruits	Does not bear fruits
(4)	Makes its own food	Cannot makes its own food

()

Marks : / 2

7. Three students made the following statements about a living thing.

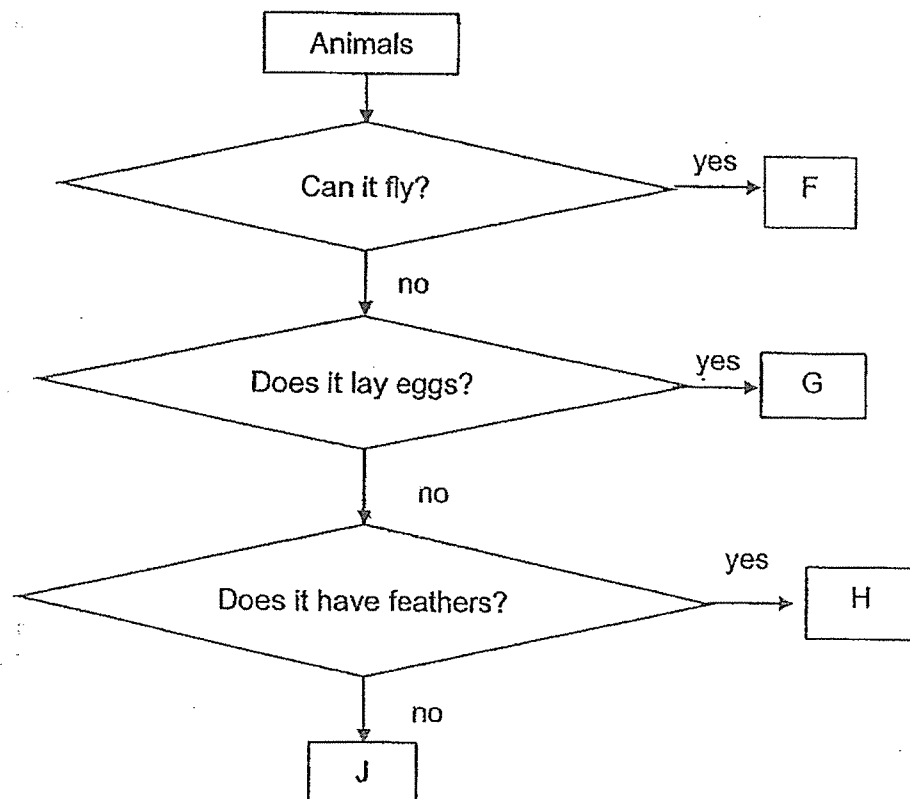
Molly : It makes us sick.
Kat : It can be found in yoghurt.
Ben : It is so tiny. I cannot see it.

Which of the following is possibly the living thing?

- (1) Ant
(2) Yeast
(3) Mould
(4) Bacteria

()

8. Study the flowchart below.



Which of the animals above, F, G, H or J represents a penguin?

- (1) F
(2) G
(3) H
(4) J

()

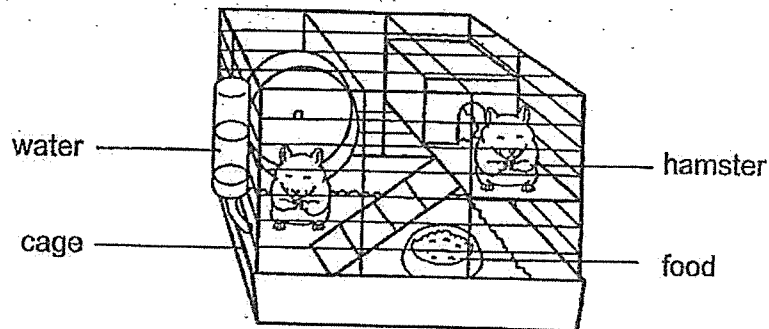
Marks : / 4

SECTION B : [14 marks]

For questions 9 to 12, write your answers in this booklet.

The number of marks available is shown in the brackets [] at the end of each question or part-question.

9. (a) Xavier kept two hamsters in a cage as shown below.



- (i) After a few days, what will he observe about the amount of water and food in the cage? [1]

- (ii) Based on his observation in a(i), state the characteristic of living things shown by the hamsters. [1]

Marks:

/ 2

- (b) He observed the hamsters daily and recorded the number of hamsters after 4 weeks in the table below.

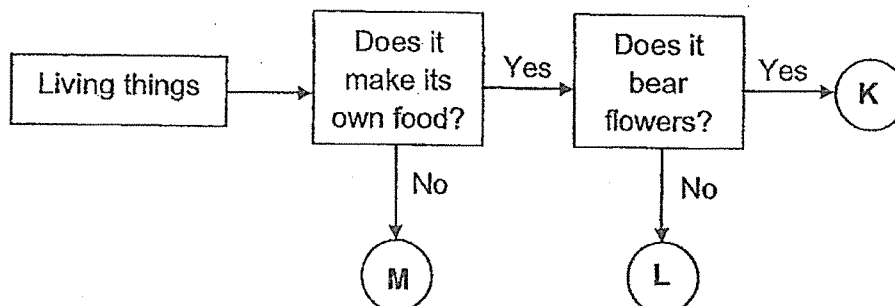
Week	Number of hamsters
1	2
4	8

He did not add or remove any hamsters during this time.

- (i) Based on the table above, state the change in the number of hamsters over the four weeks. [1]

- (ii) Based on the characteristics of living things, give a reason for the change in the number of hamsters over the four weeks. [1]

10. Study the flow chart below.



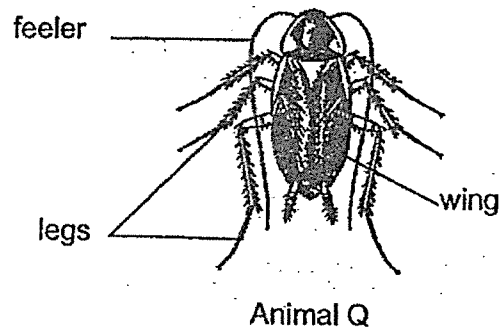
- (a) State one similarity between K and L. [1]

- (b) State one difference between L and M. [1]

Marks:

/ 4

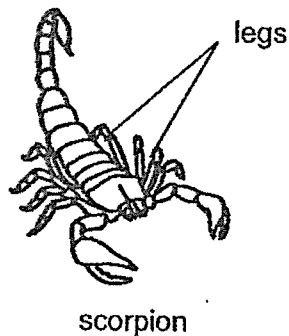
11. (a) Khan observes animal Q shown below.



- (i) Which animal group does Q belong to?

[1]

Study the scorpion shown below.



- (ii) Based on the observable characteristics, do you agree that the scorpion belongs to the same animal group as animal Q shown in (ai)? Explain why.

[1]

Marks:

/ 2

- (b) Khan recorded the characteristics of four different animals, R, S, T and U in the table below.

Animals	Does it have scales?	Does it lay eggs?	Does it have only two legs?
R	no	no	no
S	yes	yes	no
T	no	yes	no
U	no	yes	yes

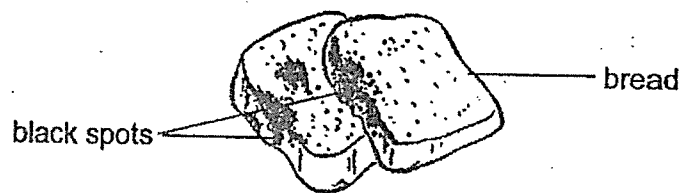
- (i) Based on the table, state all the characteristics of animal U. [1]

- (ii) Based on the table above, which of the animals above, R, S, T or U is a frog? Explain your answer. [1]

Marks:

/ 2

12. Tom wanted to have bread for breakfast but found black spots growing on his bread as shown below.



- (a) What are the black spots on his bread? [1]

- (b) Which group of living things does the black spots belong to? [1]

Tom wanted to find out what caused the black spots to appear on the bread. He used two slices of bread, V and W, one with water added and the other without water added. Both slices were placed in two different resealable bags and left on the dining table for 3 days.

	Bread V	Bread W
Condition of bread	water added	no water added
Black spots after 3 days	Yes	No

- (c) Based on the results, state the condition needed for the black spots to grow on the bread. [1]

Marks: / 3

- 12 Tom carried out another experiment on another two identical slices of bread, X and Y. Both slices of bread had water added and placed in different sealed bags.

	Bread X	Bread Y
Where it was placed	dining table	fridge
Condition of bread	water added	water added

After 3 days, he recorded his observations of the bread in the table below.

	Bread X	Bread Y
Number of black spots observed	10	3

- (d) Based on the results above, state what Tom can do to reduce the growth of black spots on his bread. [1]

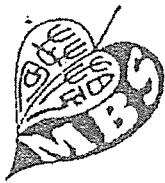
Marks:

/ 1

~ END OF PAPER ~

This is the property of Maha Bodhi School.

No part of this should be duplicated without the permission of the school.



MAHA BODHI SCHOOL
2023 WEIGHTED ASSESSMENT 2
SCIENCE REVIEW
PRIMARY THREE

Name : _____ ()

Date : 23 August 2023

Class : Primary 3 _____

Duration : 40 min

Marks:

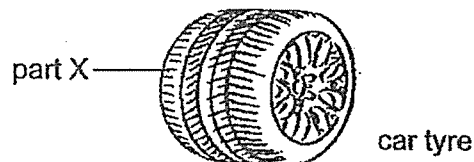
/ 30

Parent's signature : _____

Section A : [8 x 2 marks = 16 marks]

For each question from 1 to 8, four options are given. One of them is the correct answer. Make your choice (1, 2, 3 or 4). Write your answer in the bracket.

1. Study the picture below.



Which one of the materials below can be used to make part X of a car tyre shown above?

- (1) glass
- (2) metal
- (3) rubber
- (4) ceramic

()

2. Which one of the following properties of material is suitable for a water bottle used by young children?

- (1) strength
- (2) flexibility
- (3) ability to float on water
- (4) ability to allow light to pass through

()

Marks :

/ 4

3. Melody made the following observations on the life cycle of an animal.

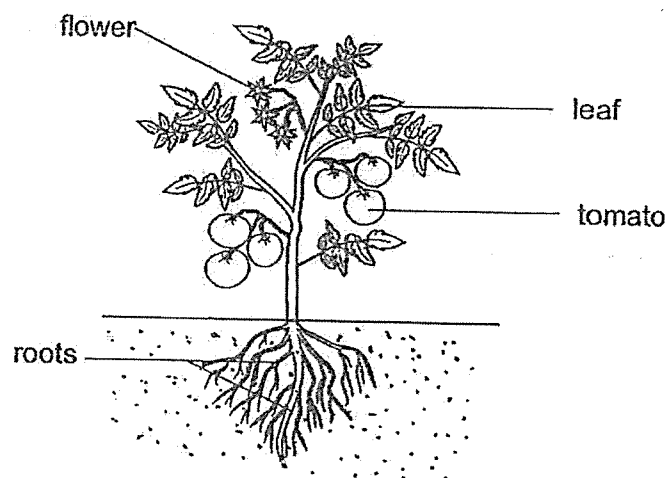
- There are three stages in the life cycle.
- The young looks like the adult.

Which one of the animals below was she observing?

- (1) frog
- (2) beetle
- (3) butterfly
- (4) cockroach

()

4. Study the diagram of a tomato plant.



How many stages are there in the life cycle of the tomato plant?

- (1) one
- (2) two
- (3) three
- (4) four

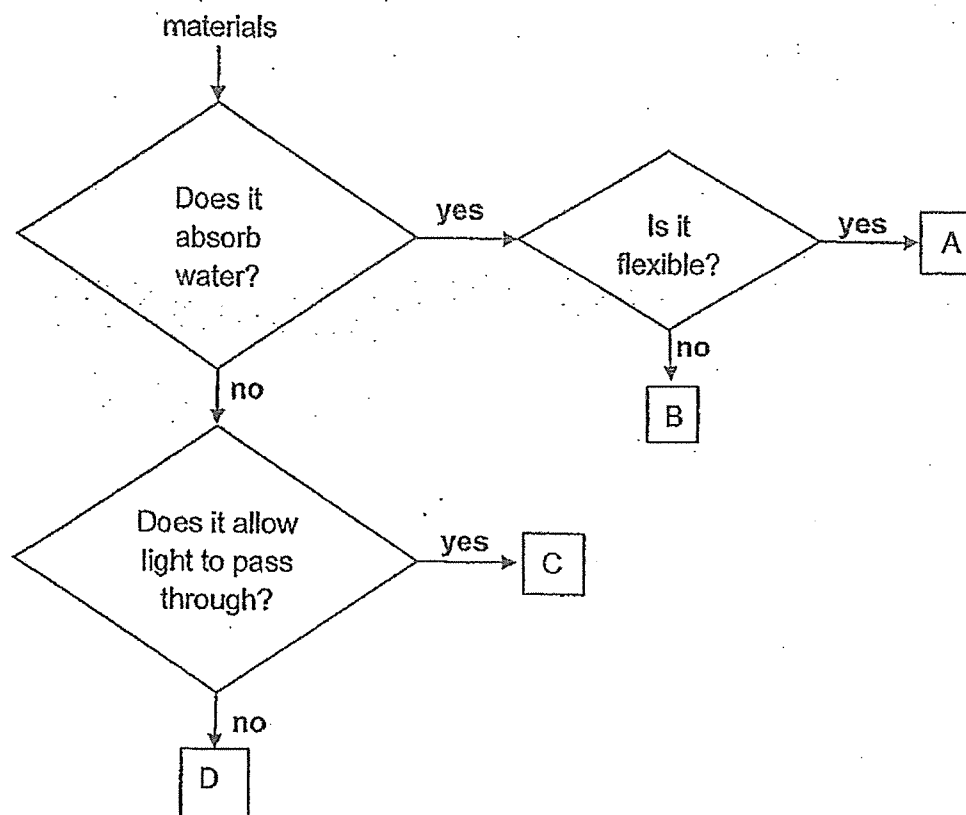
()

Marks :

--

 / 4

5. Study the flowchart below.



Which one of the materials above, A, B, C or D is suitable for a bath towel?

- (1) A
- (2) B
- (3) C
- (4) D

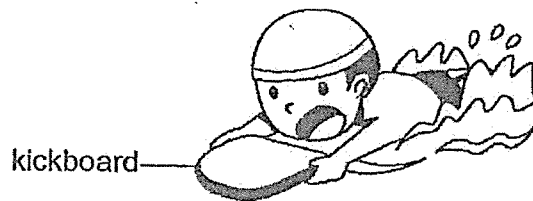
()

Marks :

/ 2

6. Study the table below. A (✓) shows that a property is present.

Materials	Properties of material		
	float on water	breaks easily	flexible
H	✓	✓	x
I	x	✓	✓
J	✓	x	x
K	✓	x	✓



Which one of the materials is suitable to make a swimming kickboard shown above?

- (1) H
- (2) I
- (3) J
- (4) K

()

7. Which of the following statements about the life cycles of all flowering plants are true?

- A. They follow a pattern.
- B. They are natural processes.
- C. All the cycles begin with a seed.
- D. All the cycles take the same time to complete.

- (1) A and B only
- (2) C and D only
- (3) A, B and C only
- (4) A, B, C and D

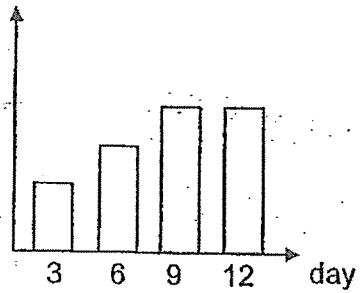
()

Marks : / 4

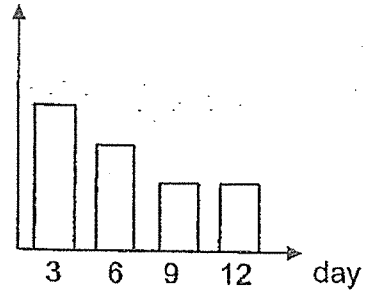
8. A larva of a butterfly was left in a setup. It was provided with some leaves. The setup was left over a few days. The number of leaves left was recorded in the form of a graph.

Which one of the following graphs correctly shows the changes in the number of leaves in the setup from the larva to the pupa stage of the butterfly?

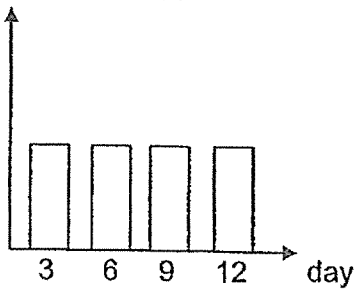
(1) number of leaves



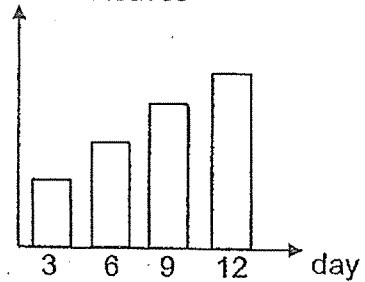
(2) number of leaves



(3) number of leaves



(4) number of leaves



Marks : / 2

SECTION B : [14 marks]

For questions 9 to 12, write your answers in this booklet.

The number of marks available is shown in the brackets [] at the end of each question or part-question.

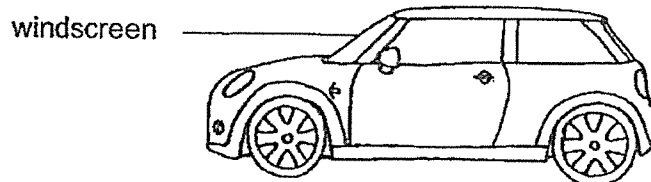
9. Study the table below. A (✓) shows that a property is present.

materials	properties of materials		
	absorb water	breaks easily	flexible
S	x	x	x
T	✓	x	x
U	x	✓	✓

- (a) Based on the table above, state all the properties of material U. [1]

- (b) Based on the table above, state one similarity between materials S and T. [1]

- (c) Study the diagram below.

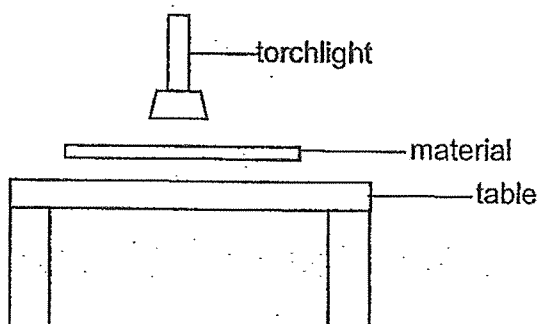


Which one of the materials, S or T is more suitable to make the windscreen of a car? Explain your answer. [2]

Marks :

/ 4

10. Bernetta conducted an experiment with materials X, Y and Z as shown below. She placed the materials, one at a time, in between a lighted torchlight and a table as shown below.



She observed the table if the material allows some or most light to pass through or does not allow light to pass through. She recorded her observations in the table below.

Materials	Results
X	does not allow light to pass through
Y	allow some light to pass through
Z	allow most light to pass through

- (a) Based on the results above, match materials X, Y and Z to the objects in the table below. [1]

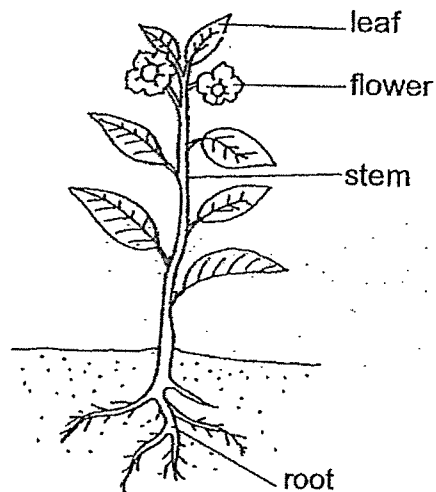
	Materials
Cardboard	
Clear glass	
Frosted glass	

- (b) Which material, X, Y or Z is best to make a fish tank so that the fish can be seen clearly? Explain your answer. [1]

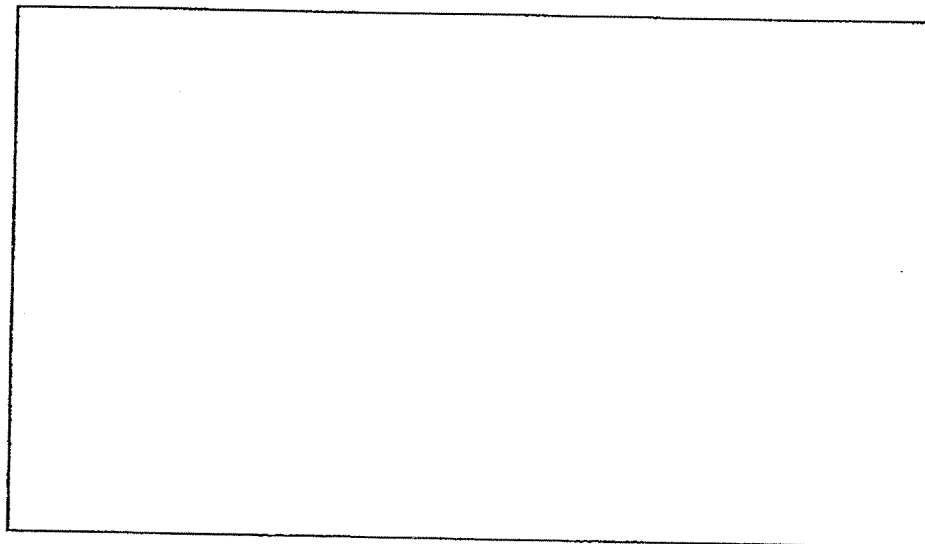
Marks:

/ 2

11. The diagram below shows a plant.



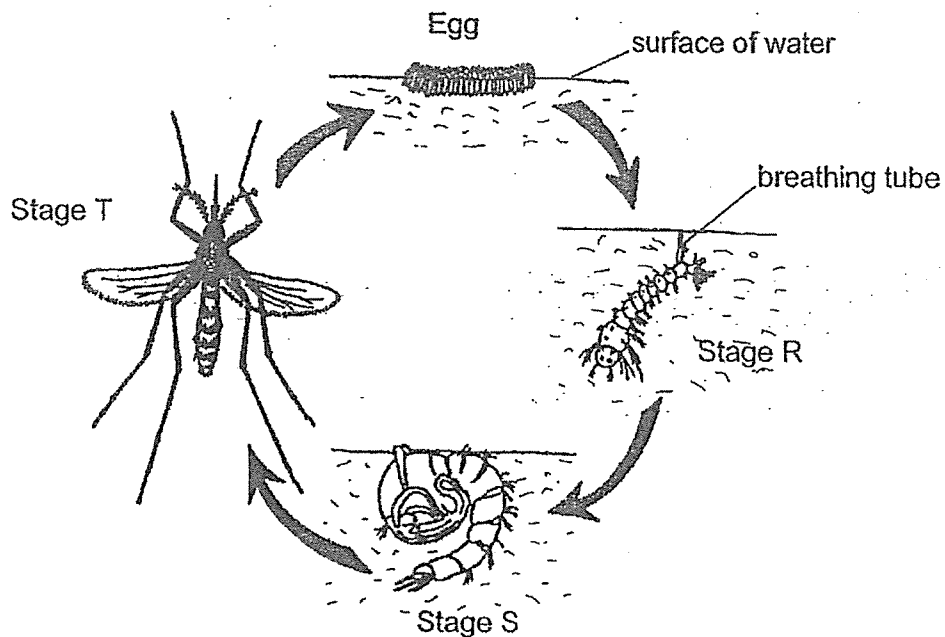
- (a) Which stage of the life cycle of a flowering plant is the above plant at? [1]
-
- (b) Which stage of the life cycle of a plant has leaves but cannot reproduce? [1]
-
- (c) Draw the life cycle of the plant in the box below. [2]



Marks:

/ 4

12. Ian was observing the life cycle of mosquito. The diagram below shows the life cycle of mosquito.

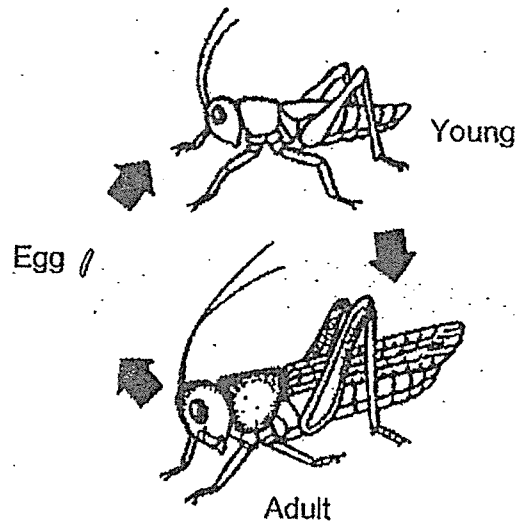


- (a) Which stage, R, S or T does mosquito not take in any food? [1]
-
- (b) One method to stop breeding of mosquitoes is to pour oil on the surface of the water. Explain how this can prevent breeding of mosquitoes. [1]
-
-
- (c) Ian suggested that the best way to get rid of the mosquitoes is to kill them at their adult stage. Do you agree with Ian? Give a reason for your answer. [1]
-
-

Marks:

/ 3

The diagram below shows the life cycle of a grasshopper.



- (d) State one difference between the life cycle of mosquito and the life cycle of a grasshopper. [1]

Marks:

/ 1

~ END OF PAPER ~

This is the property of Maha Bodhi School.

No part of this should be duplicated without the permission of the school.

SCHOOL : MAHA BODHI PRIMARY SCHOOL
 LEVEL : PRIMARY 3
 SUBJECT : SCIENCE
 TERM : 2023 REVIEW 1 AND WA 2

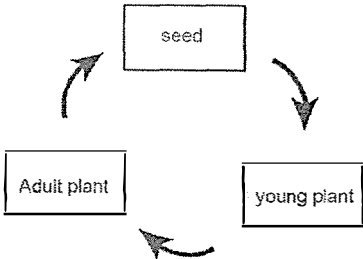
REVIEW 1

Q 1	Q2	Q3	Q4	Q5	Q6	Q7	Q8		
1	4	3	4	1	1	4	2		

Q9)	(a) (i) He will observe that the amount of water and food will decrease (ii) The hamsters showed that living things need food and water to survive. (b) (i) The number of hamsters increased (ii) Living things can reproduce.
Q10)	(a) Both make its own food. (b) M cannot make its own food but L can make its own food.
Q11)	(a) (i) It belongs to the insects group. (ii) I do not agree because it has eight legs but insects have six legs (b) (i) Animal U does not have scales but lays eggs and has two legs (ii) T because it does not have scales and does not have two legs but lays eggs like a frog.
Q12)	(a) They are mould (b) fungi (c) It has to be wet (d) Keep the bread in a cold place

WA 2

Q 1	Q2	Q3	Q4	Q5	Q6	Q7	Q8		
3	1	4	3	1	4	3	2		

Q9)	<p>(a) It is waterproof, breaks easily and is flexible.</p> <p>(b) Both do not break easily.</p> <p>(c) S. As it does not absorb water but T does absorb water.</p> <p>Windscreen should not absorb water to prevent rain from entering the car.</p>
Q10)	<p>(a) Cardboard → X Clear Glass → Z Frosted glass → Y</p> <p>(b) Z because it allows most light to pass through it so you can see the fish clearly.</p>
Q11)	<p>(a) It is at the adult stage</p> <p>(b) It is the young stage</p>  <p>(c)</p>
Q12)	<p>(a) It is stage S</p> <p>(b) The breathing tubes will be blocked by the oil and the young will die as they cannot breathe.</p> <p>(c) No, as they can easily fly away and escape.</p> <p>(d) The life cycle of the grasshopper has three stages life cycle but mosquito has four stages.</p>