

**Tao Nan School**  
**Primary 3 Science**  
**2024 Weighted Assessment 1**

Section A	10
Section B	10
Total	20

Name: \_\_\_\_\_ (    )    Date: \_\_\_\_\_

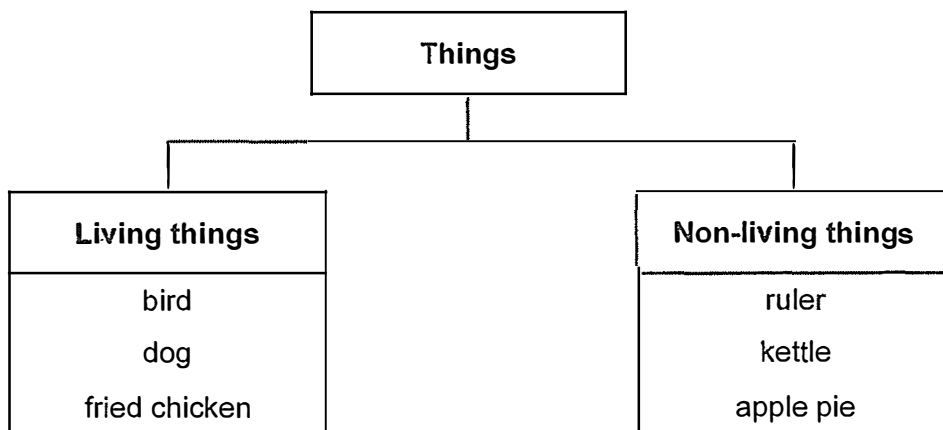
Class: \_\_\_\_\_    Parent's signature: \_\_\_\_\_

**Section A (5 x 2 marks)**

For each question from 1 to 5, four options are given. One of them is the correct answer. Make your choice (1, 2, 3 or 4) and write the answer in the brackets provided.

(10 marks)

1. Study the classification chart below.



Which of the things is classified wrongly?

(1) ruler

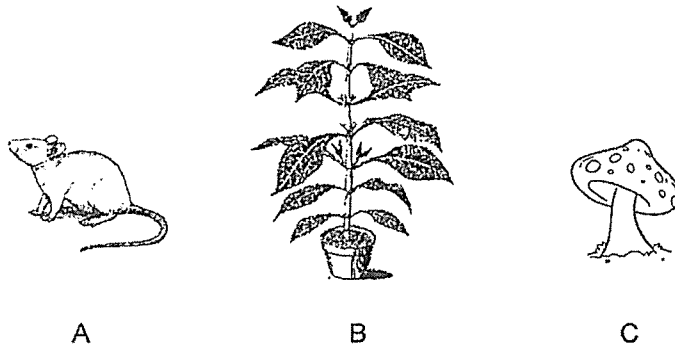
(2) kettle

(3) apple pie

(4) fried chicken

(    )

2. Four students were discussing about A, B and C as shown below.



The students made the following statements.

Martin: A and B can grow but not C.

Alisha: All of them need water to survive.

Justin: Only A cannot make its own food.

Rina: C feeds on dead and living things.

Which of the statements made by the students are false?

(1) Martin and Justin

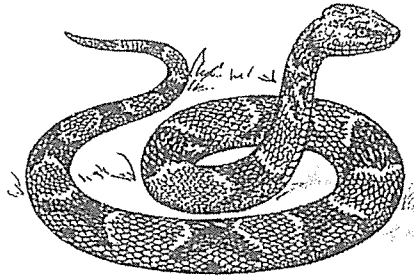
(2) Justin and Rina

(3) Martin and Alisha

(4) Alisha and Rina

( )

3. Look at the picture of the animal below.



Which one of the following statements is true?

(1) It has hair.

(2) It has scales.

(3) It has feathers.

(4) It has moist skin.

( )

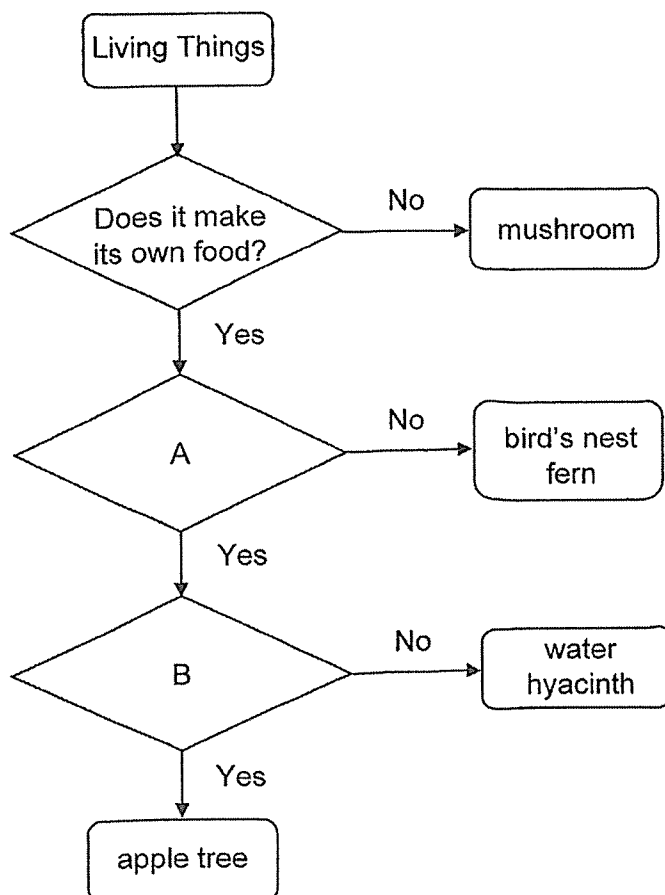
4. The following observations and characteristics of living things were made.

Which of the following observations is correctly matched to the characteristic of living things?

	Observation	Characteristic of Living Things
(1)	A mimosa plant folds up its leaves when touched.	Living things reproduce.
(2)	A crocodile lays eggs.	Living things respond to changes.
(3)	A bird flies from tree to tree.	Living things need air, food and water to stay alive.
(4)	A tadpole changes into a frog.	Living things grow.

( )

5. Study the flowchart below.



Based on the flowchart above, which of the following is represented by A and B?

	A	B
(1)	Does it reproduce by seeds?	Does it grow on land?
(2)	Does it reproduce by seeds?	Does it grow in water?
(3)	Does it reproduce by spores?	Does it grow in water?
(4)	Does it reproduce by spores?	Does it grow on land?

( )

End of Section A

**Section B (5 x 2 marks)**

For questions 6 to 10, write your answers clearly in this section.

The number of marks available is shown in brackets [ ] at the end of each question or part question.

(10 marks)

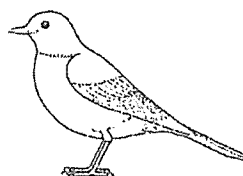
6. Study the classification table below.

Animal	Type of outer covering	Number of wings	Number of legs
A	Hair	0	4
B	Feathers	2	2
C	Scales	0	0
D	Moist skin	0	4
E	Hard outer covering	2	6

(a) Which animal, A, B, C, D or E, is an insect? Explain your answer. [1]

---

The following shows animal X.



(b) Which of the animals, A, B, C, D or E, is probably animal X? Explain your answer. [1]

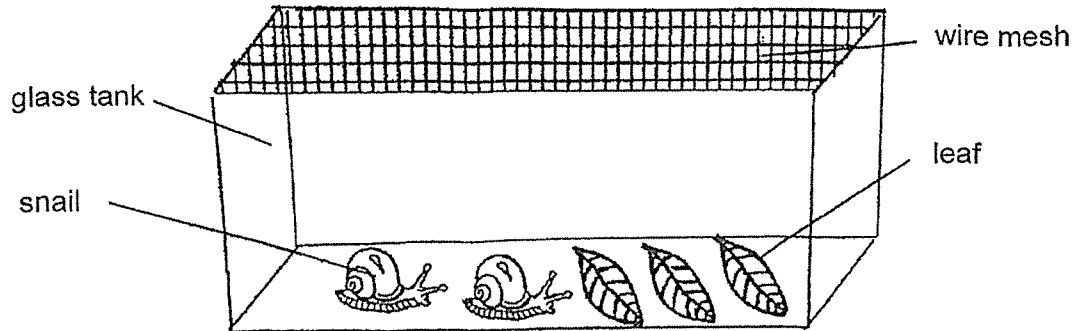
---

---

5

Score	<div style="text-align: center;">1 — 2</div>
-------	--

7. Ethan placed two snails in a glass tank as shown in the set-up below.



- (a) What would happen to the number of leaves in the tank after two weeks?  
Explain your answer.

[1]

---

---

- (b) Why did Ethan use a wire mesh instead of a plastic sheet to cover the glass tank?  
Explain your answer.

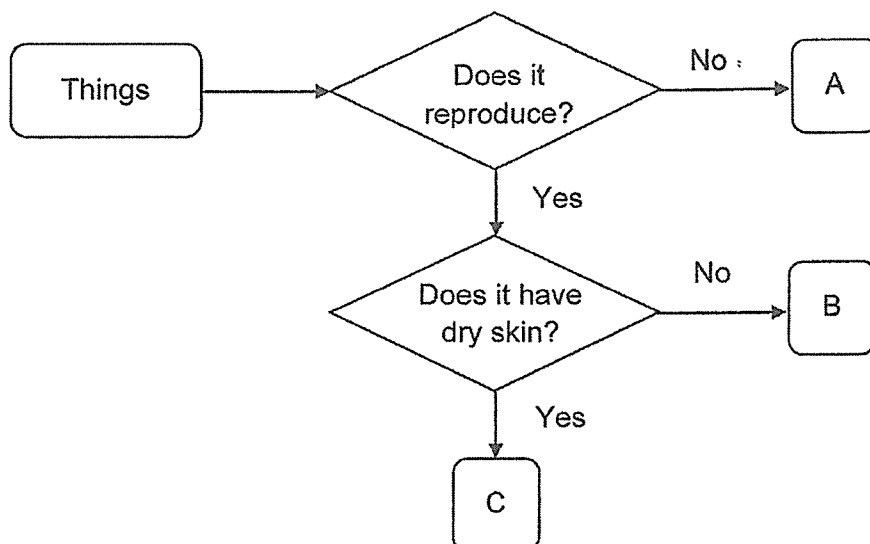
[1]

---

---

Score	2
-------	---

8. Edith created the following flowchart.



- (a) Based on the flowchart, state all the characteristics of C. [1]

---

---

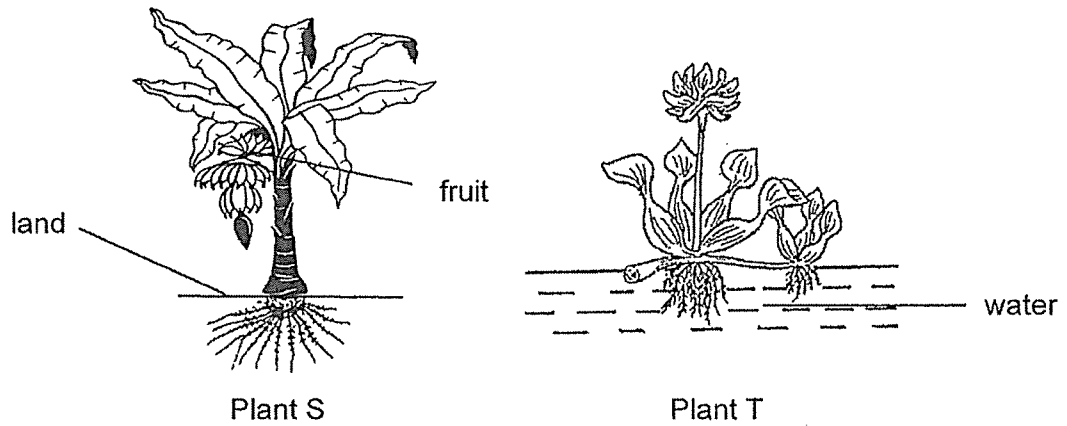
- (b) Based on the flowchart, classify the following by writing A, B or C in the spaces provided. [1]

Chair: \_\_\_\_\_

Amphibian: \_\_\_\_\_

Score	2
-------	---

9. Ali came across Plant S and Plant T at a garden as shown in the diagrams below. (The plants are not drawn to scale.)



- (a) How can Ali tell that Plant S is a flowering plant even though there are no flowers on it? [1]

---

---

- (b) Based on the diagrams above, state one difference between the two flowering plants. (Do not compare their sizes.) [1]

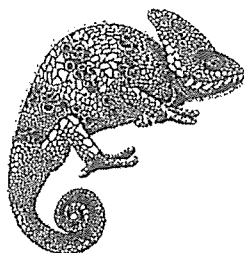
---

---

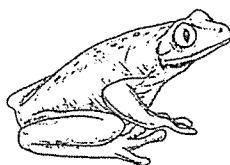
Score	2
-------	---



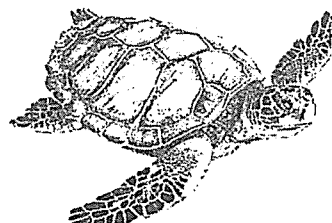
10. Sarah placed the animals below in the same animal group. However, her teacher told her that one of the animals did not belong to that animal group.



Animal W



Animal Y



Animal Z

- (a) Which animal, W, Y or Z, was grouped wrongly? Explain using the characteristics of the animals. [1]

---

---

- (b) Sarah told her teacher that all the animals above had the same method of reproduction. Was she correct? Explain why. [1]

---

---

Score	2
-------	---

End of paper



SCHOOL : TAO NAN SCHOOL  
 LEVEL : PRIMARY 3  
 SUBJECT : SCIENCE  
 TERM : 2024 WA1

Q1)	4
Q2)	1
Q3)	2
Q4)	4
Q5)	1
Q6)	a)E. It has hard outer covering, b)B. B has feathers, two wings and two legs just like animal X.
Q7)	a) The leaves would decrease. The snail ate them. b) The wire mesh has holes to allow air to enter the glass tank so the snails has air to breathe.
Q8)	a)C reproduces and has dry skin. b)Chair : A Amphibian : B
Q9)	a) plant S bears fruits. b) Plant S grows on land but Plant T grows in water.
Q10)	a)Y. Y has moist skin but W and Z have scales. b)Yes. Animal W, Animal Z and Animal Y all reproduce by laying eggs.

