



**Catholic High School (Primary)  
Primary 3 Science 2020  
Weighted Assessment**

Name: \_\_\_\_\_

Class: Pri. 3 \_\_\_\_\_

Date: \_\_\_\_\_ 2020

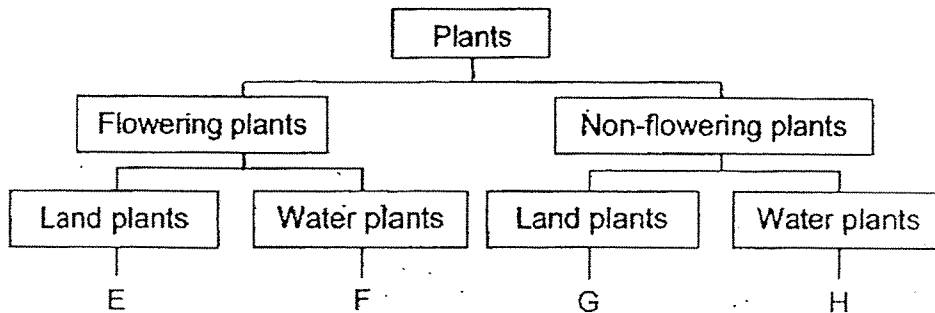
Parent's Signature: \_\_\_\_\_

MARKS	30
-------	----

**Section A (10 × 2 marks)**

For each question from 1 to 24, four options are given. One of them is the correct answer. Make your choice (1, 2, 3 or 4). Write your answer in the brackets provided.  
(20 marks)

1 Study the diagram below.



Jack saw a plant growing on a tree. He found spore bags on the underside of its leaves.

Based on the diagram, which of the following represents this plant?

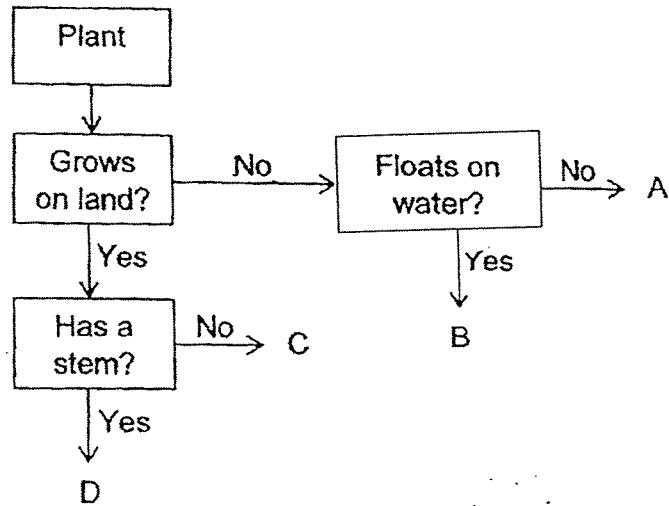
- (1) E
- (2) F
- (3) G
- (4) H

(     )

2 The diagram below shows a water plant.



Study the diagram below.



Which of the following represents the water plant?

- (1) A
- (2) B
- (3) C
- (4) D

( )

- 3 The table below shows the characteristics of animals P and Q. A tick (✓) shows the presence of the characteristic.





Characteristics	P	Q
has dry scaly skin	✓	
can live both on land and in water	✓	
females produce milk for young		✓

Which of the following best represents animals P and Q?

	P	Q
(1)	reptile	amphibian
(2)	reptile	mammal
(3)	amphibian	reptile
(4)	amphibian	mammal

( )

- 4 The animals below are grouped according to one common characteristic.

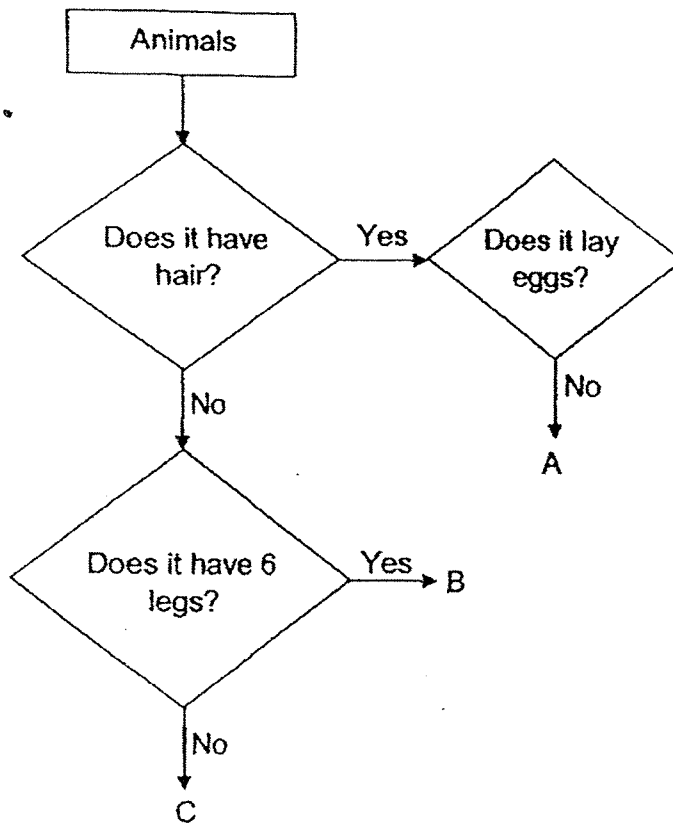
 animal W	 animal X
 animal Y	 animal Z

Based on the diagram above, which animal does **not** belong to the group?

- (1) animal W
- (2) animal X
- (3) animal Y
- (4) animal Z

( )

5 Study the diagram below.



Which animal groups correctly represents A, B and C?

	A	B	C
(1)	amphibian	fish	bird
(2)	mammal	insect	fish
(3)	fish	amphibian	bird
(4)	insect	mammal	fish

( )

6 Which statement about bacteria is **not** correct?

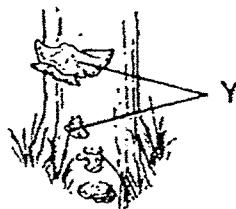
- (1) Some bacteria are harmful.
- (2) Bacteria come in different shapes.
- (3) Bacteria feed only on dead living things.
- (4) Bacteria cannot be seen with the naked eyes.

( )

7 The diagram below shows two living things.



X



How are X and Y similar?

- A Both reproduce by spores.
- B Both are non-flowering plants.
- C Both can make their own food.
- D Both need air, food and water to survive.

- (1) A and D only
- (2) B and C only
- (3) A, B and D only
- (4) A, B, C and D

( )

8 The diagram below shows a boy using a swimming board.



swimming board

Which material and its given property should be considered to make the swimming board?

	Material	Property
(1)	A	It is flexible.
(2)	B	It is absorbent.
(3)	C	It is able to float.
(4)	D	It allows light to pass through.

( )

9 Study the table below.

Materials	Transparent	Waterproof	Flexible
A	No	No	No
B	No	No	Yes
C	Yes	Yes	No
D	Yes	Yes	Yes

Which material, A, B, C or D, is most suitable to make part X of an umbrella?



- (1) A
- (2) B
- (3) C
- (4) D

( )

10 Jacinta wanted to find out which bag, A or B, is more suitable for carrying canned food from the supermarket without tearing.



A



B

What should she do to find out which bag is more suitable?

- (1) Put both bags in water.
- (2) Bend both bags slowly.
- (3) Shine a light at the bags.
- (4) Put canned food into both bags.

( )

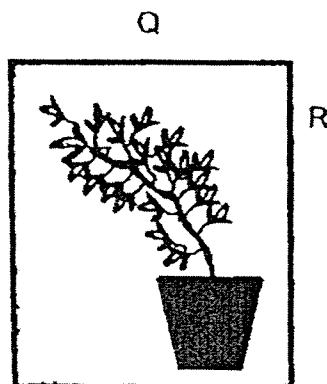
**Section B (10 marks)**

For questions 11 to 14, write your answers in this booklet.

The number of marks available is shown in brackets [ ] at the end of each question or part question. (10 marks)

---

- 11 Muthu placed a plant in a cardboard box which had a hole in it. After 5 days, he realised that the plant had grown as shown in the diagram below.



- (a) Based on how the plant has grown, which part, P, Q or R, could the hole most likely be located? [1]

---

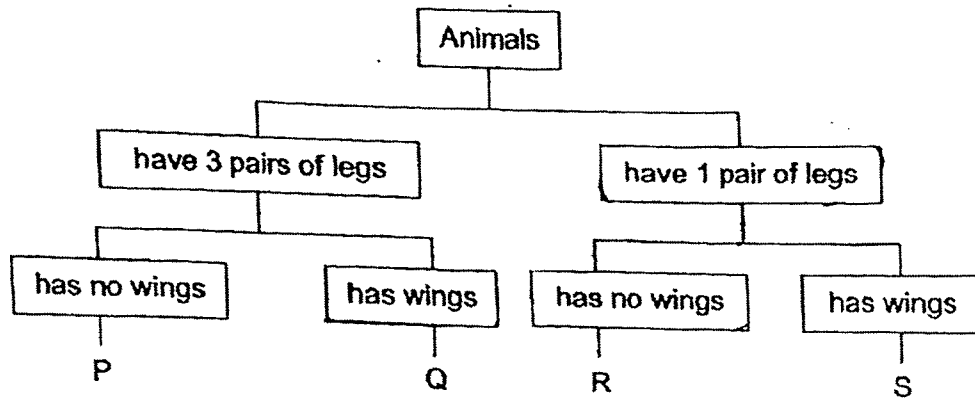
- (b) If the hole was covered with a piece of black paper, what would happen to the plant after one month? [1]

---

(Go on to the next page)

SCORE	2
-------	---

12 Study the diagram below.



(a) Based on the diagram above, describe animal R. [1]

---



---

(b) The diagram below shows animal W.



Which letter, P, Q, R or S, in the diagram above best represents animal W? [1]

---

(c) (i) Which group of animals does animal W belong to? [½]

---

(ii) Apart from the characteristics shown in the diagram above, state one other characteristic to support your answer. [½]

---

(Go on to the next page)

SCORE	3
-------	---



- 13 Jun Hao left an orange on the table as shown in the diagram below. After a few weeks, he noticed living thing X growing on it.



orange at the start



orange a few weeks later

- (a) Based on the diagram, which group of living things does X belong to? [1]

\_\_\_\_\_

- (b) Based on your answer in (a), what does X feed on? [1]

\_\_\_\_\_

- (c) How does X reproduce? [1]

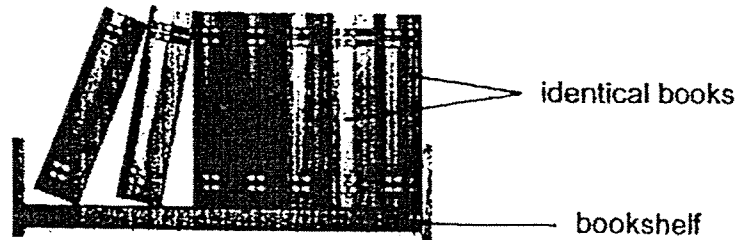
\_\_\_\_\_

(Go on to the next page)

SCORE	3
-------	---

- 14 Jason wanted to find out which material, A, B, C or D, is most suitable to make a bookshelf.

He placed identical books on four similar bookshelves made of materials A, B, C and D until the bookshelf broke.



He recorded his observation in the table below.

Material	A	B	C	D
Maximum number of identical books needed to break the shelf	15	12		5

- (a) Based on the result above, which is the most suitable material to make the bookshelf? [1]

---

- (b) Explain your answer in (a). [1]

---

---

End of Paper

SCORE	2
-------	---

## ANSWER KEY

**YEAR: 2020**

**LEVEL: PRIMARY 3**

**SCHOOL: CATHOLIC HIGH SCHOOL**

**SUBJECT: SCIENCE**

**TERM: WEIGHTED ASSESMENT 1**

### BOOKLET A

Q1	3	Q2	2	Q3	2	Q4	1	Q5	2
Q6	3	Q7	1	Q8	3	Q9	4	Q10	4

### BOOKLET B

Q11.

- a) The hole is most likely located at part P.
- b) The plant will die as there is no sunlight.

Q12.

- a) Animal R has no wing and only have one pair of legs .
- b) Q
- ci) Animal W belong to the group insect.
- cii) Animal W has 3 pair of legs .

Q13.

- a) Fungi
- b) It feeds on living things both dead or alive.
- c) By spores.

Q14.

- a) Material C
- b) Material C can hold the most number of books before it breaks. This shows that material C is the strongest material.