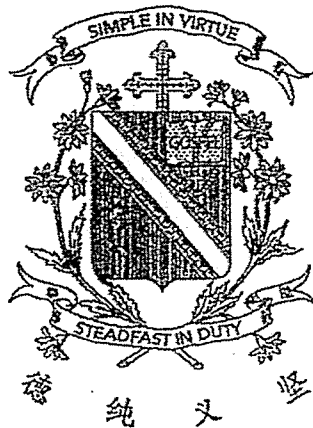


Name: _____ ()

Class: Primary 3 _____

CHIJ ST NICHOLAS GIRLS' SCHOOL

Primary 3
Termly Assessment 1
SCIENCE
BOOKLET A
16 July 2020

Total Time for Booklets A and B: 1 hour

14 questions
28 marks

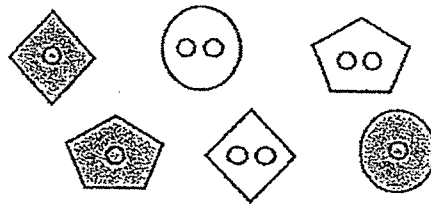
Do not open this booklet until you are told to do so.
Follow all instructions carefully.
Answer all questions.

This booklet consists of 11 printed pages.

Section A (14 x 2 marks = 28 marks)

For each question from 1 to 14, four options are given. One of them is the correct answer. Make your choice (1, 2, 3 or 4). Shade the correct oval (1, 2, 3 or 4) on the Optical Answer Sheet provided.

1. Melissa is classifying some buttons shown below.



Which one of the following shows the best way of classifying the buttons into two groups A and B?

	Group A	Group B
(1)		
(2)		
(3)		
(4)		

2. Which one of the following observations is matched correctly to the characteristic of living things?

	Observation	Characteristic
(1)	A boy moved his foot away from a nail he stepped on.	Living things can respond to changes.
(2)	A caterpillar changes into a butterfly.	Living things can reproduce.
(3)	A frog lays eggs.	Living things can grow.
(4)	A monkey swings from tree to tree.	Living things need air, food and water.

3. The following statements were made about plants.

- A Flowering plants only grow on land.
- B Flowering plants can reproduce by seeds.
- C Non-flowering plants cannot produce fruits.
- D Non-flowering plants cannot respond to changes around them.

Which of the statements are correct?

- (1) A and D only
- (2) B and C only
- (3) C and D only
- (4) A, B and C only

4. Annie found some moss growing on a rock.

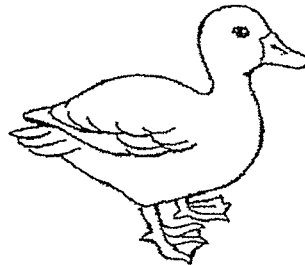


Which of the following shows the characteristics of moss?

A tick (✓) shows that moss has the characteristics.

	Can make its own food	Produce fruits	Needs air, food and water
(1)	✓	✓	✓
(2)			
(3)	✓		✓
(4)			✓

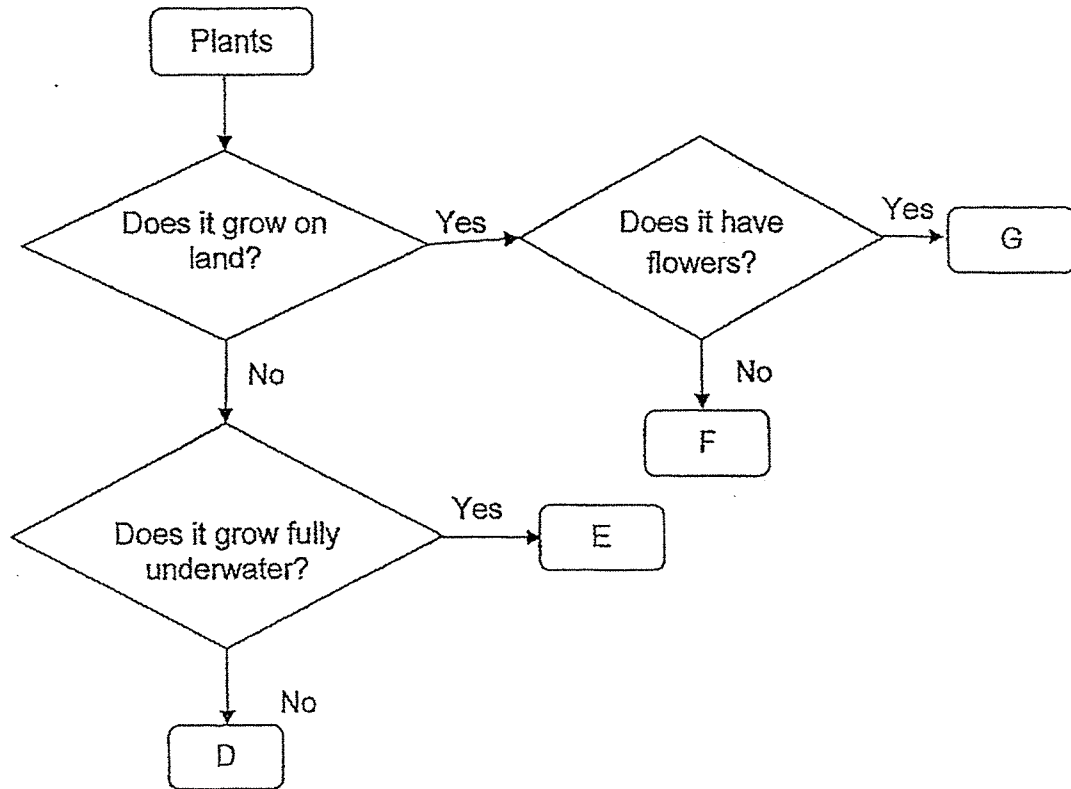
5. The picture below shows a duck.



Which of the following characteristic confirms that the duck is a bird?

- (1) It has a tail.
- (2) It lays eggs.
- (3) It has webbed feet.
- (4) It has an outer covering of feathers.

6. Study the flow chart below.



The water lily is a water plant. Its roots are in water while its leaves and flowers float on the water surface.

Based on the flow chart above, which of the following letters best represents the water lily?

- (1) D
- (2) E
- (3) F
- (4) G

7. Jason found an animal in a garden. What must he do to confirm that it is an insect?

- (1) Observe if the animal lays eggs.
- (2) Observe if the animal has wings.
- (3) Measure the length of the animal.
- (4) Count the number of body parts the animal has.

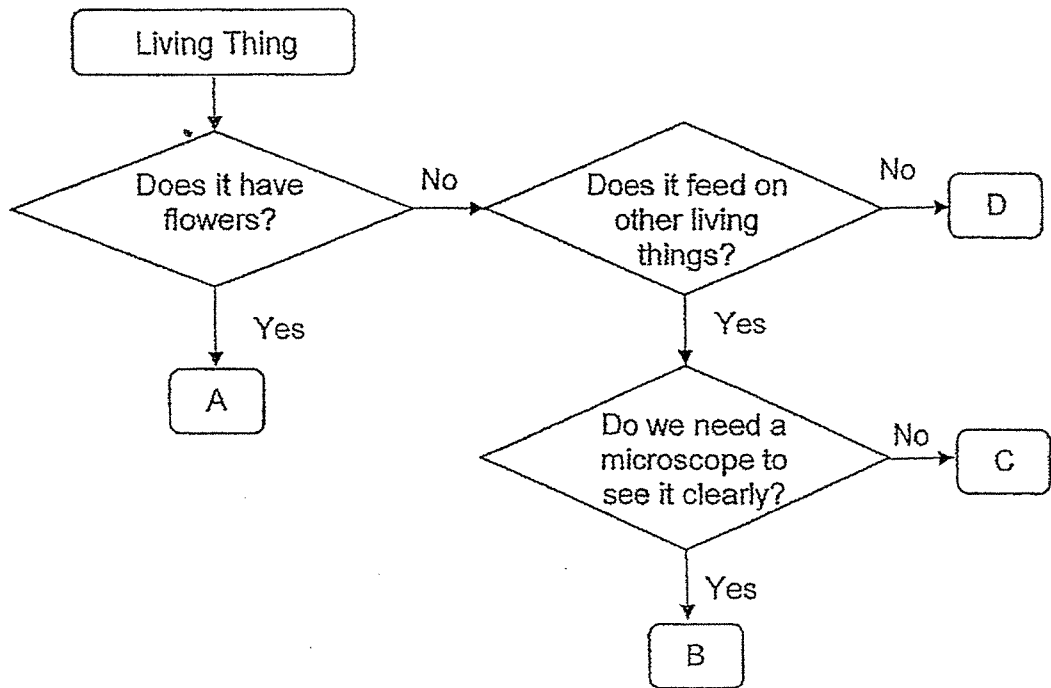
8. The table below shows Devi's observations of four animals A, B, C and D. A tick (✓) shows that the characteristic was observed.

Characteristics	Animals			
	A	B	C	D
It has scales.	✓		✓	
It breathes through its gills.	✓			
It breathes through its moist skin.		✓		
It lays eggs.	✓	✓	✓	

Based on the table, which of the following shows the correct classification?

	A	B	C	D
(1)	frog	tilapia	shark	turtle
(2)	shark	turtle	salamander	seal
(3)	tilapia	frog	turtle	dolphin
(4)	turtle	salamander	seal	tilapia

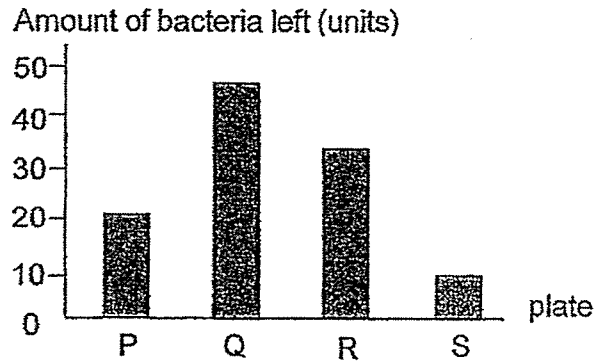
9. Study the flow chart below.



Based on the flow chart, which of the following letters A, B, C or D is correctly matched to the living thing?

	Letter	Living Thing
(1)	A	staghorn fern
(2)	B	bacteria
(3)	C	yeast
(4)	D	orchid

10. Bala put the same amount of bacteria on four plates P, Q, R and S. He then put the same amount of hand sanitizer on each plate and recorded the amount of bacteria left on the plate in the graph below.



Which hand sanitizer is the most effective in killing bacteria?

- (1) P
 - (2) Q
 - (3) R
 - (4) S
11. Siti wanted to investigate the conditions required for bread mould to grow. She placed four identical pieces of moist bread A, B, C and D under different conditions and recorded her findings in the table below.

Moist bread	Conditions	Did mould grow?
A	dark and cold place	No
B	bright and cold place	No
C	dark and warm place	Yes
D	bright and warm place	Yes

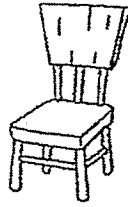
From this experiment, Siti found out that bread mould _____.

- (1) need light to grow
- (2) need water to grow
- (3) grow in a dark place
- (4) grow in a warm place

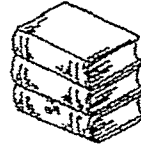
12. The pictures below show four items found in Sally's house.



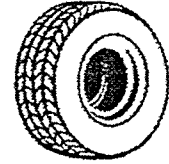
bamboo chopsticks



wooden chair



books



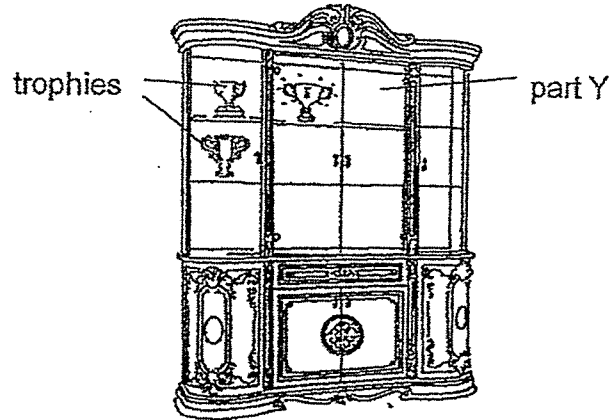
rubber tyre

What do these items have in common?

- A They need air to survive.
- B They are non-living things.
- C They are made from plants.
- D They respond to changes around them.

- (1) A and B only
- (2) B and C only
- (3) C and D only
- (4) A, B and D only

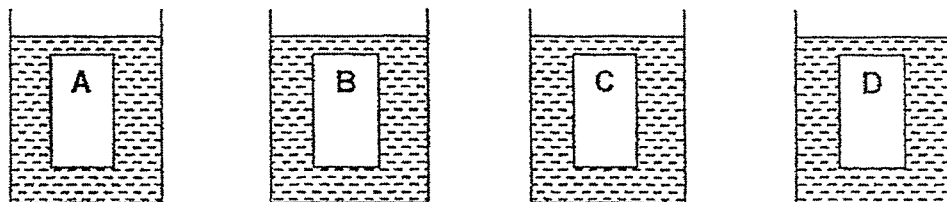
13. Rosnah wanted to choose a material to make part Y of a cabinet to display her trophies.



Which of the properties is the most important when choosing a material to make part Y of the display cabinet?

- (1) flexibility
- (2) waterproof
- (3) transparency
- (4) floats on water

14. Jane cut four different materials A, B, C and D into the same size. She weighed them individually before placing them into beakers of water as shown below.



After 5 minutes, each piece was removed from the beaker and weighed again. She recorded her findings in the table below.

Material	Mass at the beginning (g)	Mass after 5 minutes (g)
A	7	16
B	8	13
C	4	11
D	6	6

Based on the results of the experiment, which material is most suitable for making a bath towel?

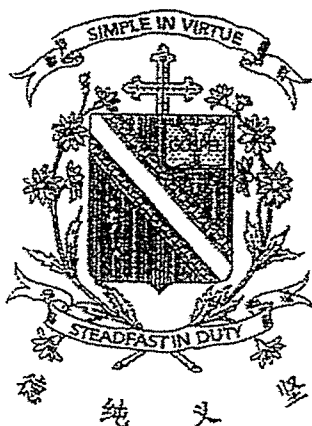
- (1) A
- (2) B
- (3) C
- (4) D

End of Section A

Name: _____ ()

Class: Primary 3 _____

CHIJ ST NICHOLAS GIRLS' SCHOOL



Primary 3 Termly Assessment 1 SCIENCE

BOOKLET B

16 July 2020

Total Time for Booklets A and B: 1 hour

4 questions
12 marks

Do not open this booklet until you are told to do so.
Follow all instructions carefully.
Answer all questions.

This paper consists of 5 printed pages.

Booklet A	28
Booklet B	12
Total	40

Parent's Signature/Date

Section B (12 marks)

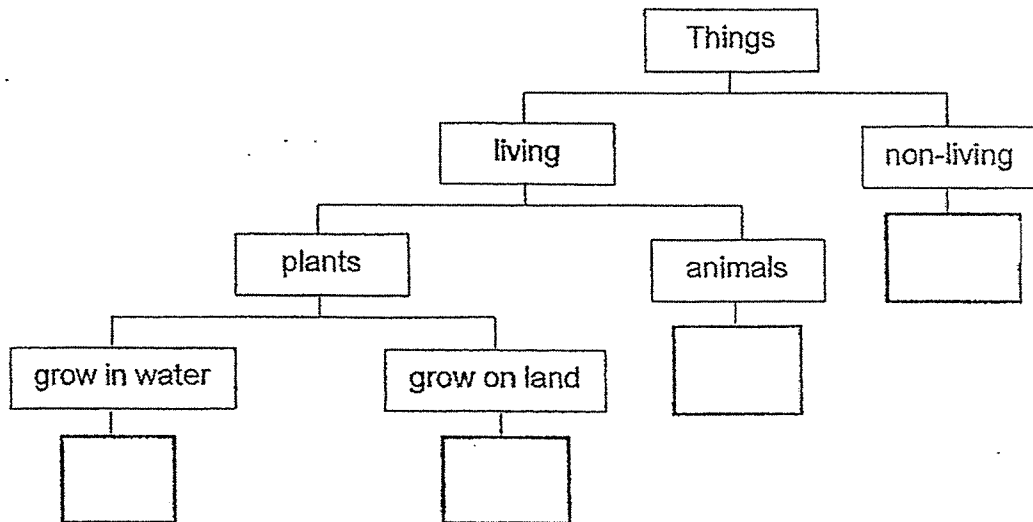
For questions 15 to 18, write your answers in this booklet.

The number of marks available is shown in the brackets at the end of each question or part question.

15. The table below shows the characteristics of four things P, Q, R and S.
A tick (✓) shows that the thing has the characteristic.

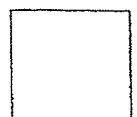
Characteristic	Thing			
	P	Q	R	S
Needs air, food and water to survive	✓	✓		✓
Can be found in water	✓		✓	✓
Can reproduce and die	✓	✓		✓
Can make its own food	✓	✓		

- (a) Fill in the boxes with the letters P, Q, R and S in the classification table below. [2]

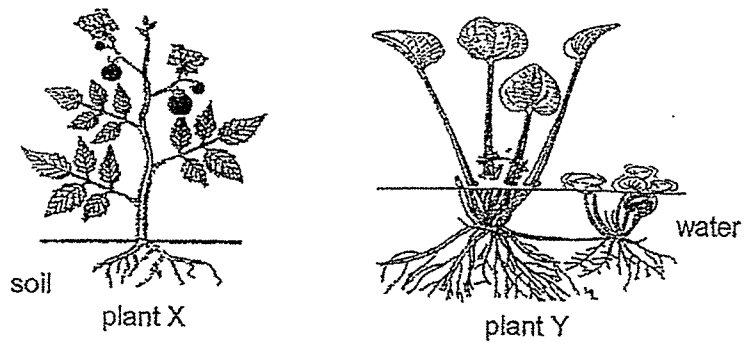


- (b) Name a thing that has the same characteristic as Q.

[1]



16. Study the plants below.

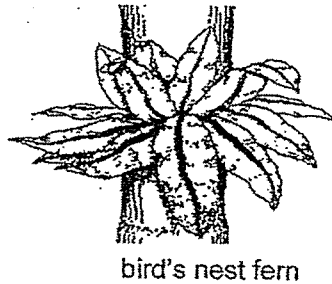


- (a) Based only on what is observable in the diagram above, state 2 similarities in their plant parts of plant X and plant Y. (Do not compare their shape, sizes and colours.) [2]

Similarity 1: _____

Similarity 2: _____

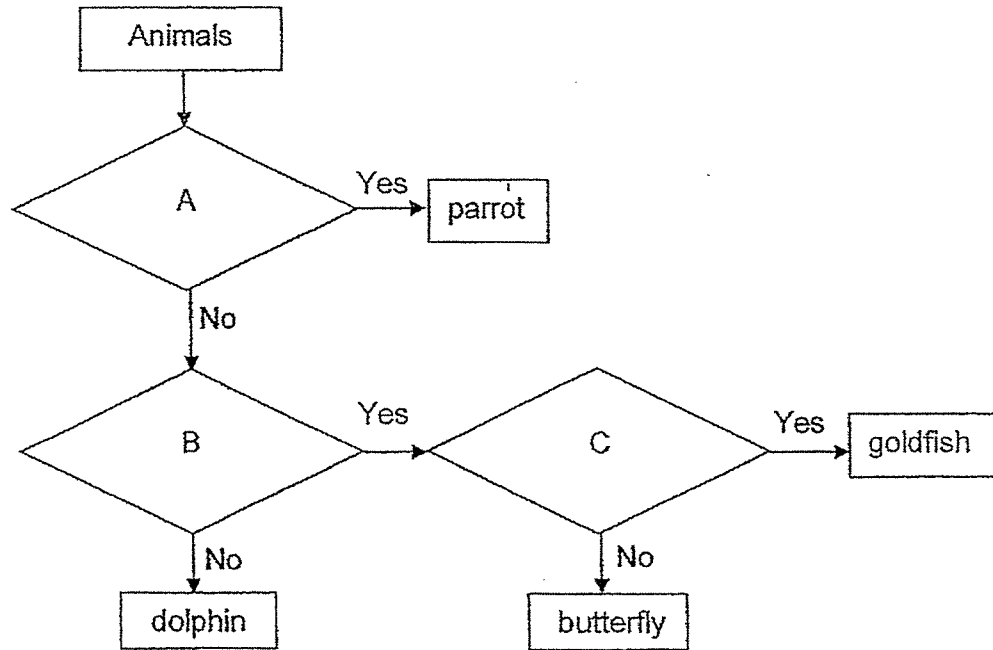
Lucy saw a bird's nest fern growing on a tree.



- (b) Based on their method of reproduction, state one difference between the bird's nest fern and plant X. [1]



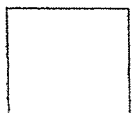
17. Study the flow chart below.



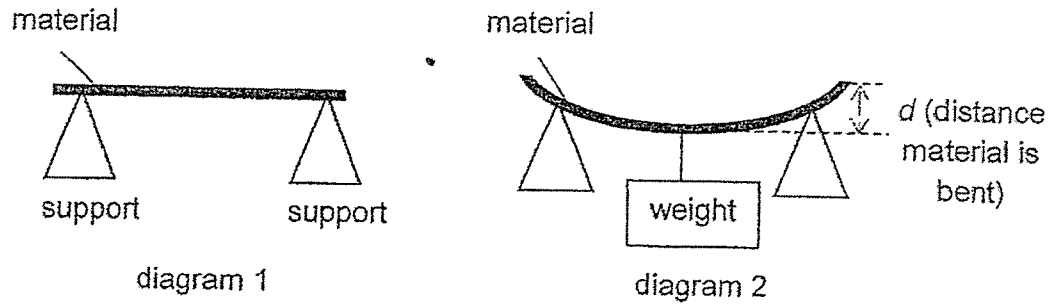
(a) Write letters A, B and C to match the questions to the flow chart in the box below. [2]

Questions	Write letters (A, B or C)
Does it have scales?	
Does it have two legs?	
Does it lay eggs?	

(b) State one function of the outer covering of a parrot. [1]



18. Nancy set up an experiment as shown below to compare a property of three materials P, Q and R. She measured the distance d for each material when the same weight was hung on each of the materials.

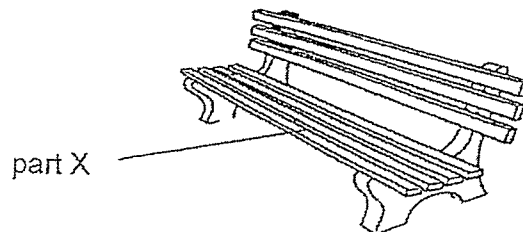


She recorded the results in the table below.

Material	Distance d (cm)
P	2
Q	3
R	1

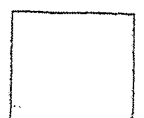
- (a) Which property of materials was Nancy trying to compare? [1]

Nancy wanted to use one of the materials to make part X of a bench.



- (b) Based on the results, which material P, Q or R is most suitable for making part X of the bench? Explain your answer. [2]

End of paper



ANSWER KEY

YEAR : 2020
 LEVEL : PRIMARY 3
 SCHOOL : CHIJ ST NICHOLAS GIRLS' SCHOOL
 SUBJECT : SCIENCE
 TERM : TERM 1 ASSESSMENT

Q1	4	Q2	1	Q3	2	Q4	3	Q5	4
Q6	1	Q7	4	Q8	3	Q9	2	Q10	4
Q11	4	Q12	2	Q13	3	Q14	1		

Q15	(a)P, Q, S, R (b)Sunflower plant
Q16	(a)Similarity 1: Both plants has roots Similarity 2: Both plants has leafs. (b)Plant X reproduce by seeds but bird's nest ferns reproduce by spores
Q17	(a)C A B (b)The parrot's feathers help to keep it warm.
Q18	(a)Flexibility (b)R. R is the least flexible as a bench needs to be least flexible so that it will not bend when people sit on it.