



RAFFLES INSTITUTION

2018 YEAR 6 PRELIMINARY EXAMINATION

MATHEMATICS

9758/01

Paper 1

Total Marks: 100

3 hours

Additional materials: Answer Paper
List of Formulae (MF26)

READ THESE INSTRUCTIONS FIRST

Write your name and CT group on all the work you hand in.
Write in dark blue or black pen on both sides of the paper.
You may use an HB pencil for any diagrams or graphs.
Do not use staples, paper clips, glue or correction fluid.

Answer **all** the questions.

Give non-exact numerical answers correct to 3 significant figures, or 1 decimal place in the case of angles in degrees, unless a different level of accuracy is specified in the question.

You are expected to use an approved graphing calculator.

Unsupported answers from a graphing calculator are allowed unless a question specifically states otherwise.

Where unsupported answers from a graphing calculator are not allowed in a question, you are required to present the mathematical steps using mathematical notations and not calculator commands.

You are reminded of the need for clear presentation in your answers.

At the end of the examination, fasten all your work securely together.

The number of marks is given in brackets [] at the end of each question or part question.

This document consists of **9** printed pages.

RAFFLES INSTITUTION
Mathematics Department

- 1 Adult tickets for a parade are sold at three different prices, depending on the type of seats.

Children under the age of 12 and Senior Citizens aged 65 and above can enjoy 20% and 10% off the adult ticket prices respectively. Those who are between 12 and 64 years old (inclusive) will have to pay the full adult ticket price.

The number of tickets sold in each category for each group of people, together with the total cost of the tickets for each group, are given in the following table.

	Category 1 tickets (premier)	Category 2 tickets (sheltered)	Category 3 tickets (unsheltered)	Total cost
Adults (12 to 64 years old (inclusive))	150	120	200	\$18 000
Children (under 12 years old)	80	40	100	\$6 760
Senior Citizens (65 years old and above)	100	100	100	\$10 665

Write down and solve equations to find the price of an adult ticket for each of the ticket categories. [4]

- 2 Aden, a member of Raffles Art Club, is helping to design a graphic for the school's homecoming event. The main body of the graphic consists of N concentric circles $C_1, C_2, C_3, \dots, C_N$ with radii $r, 2r, 3r, \dots, Nr$, where r is a constant and N is an even integer, as shown in Fig. 1.

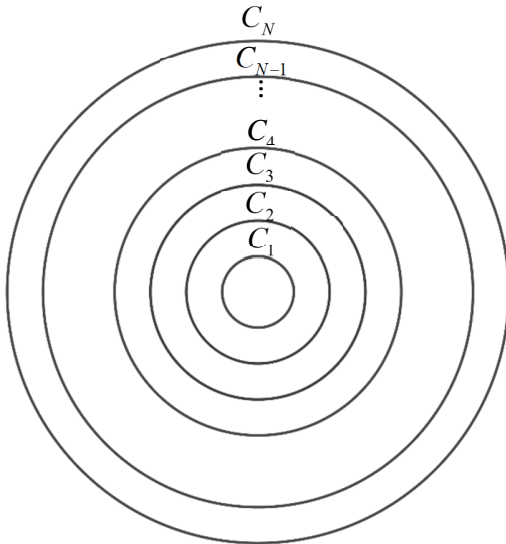


Fig. 1

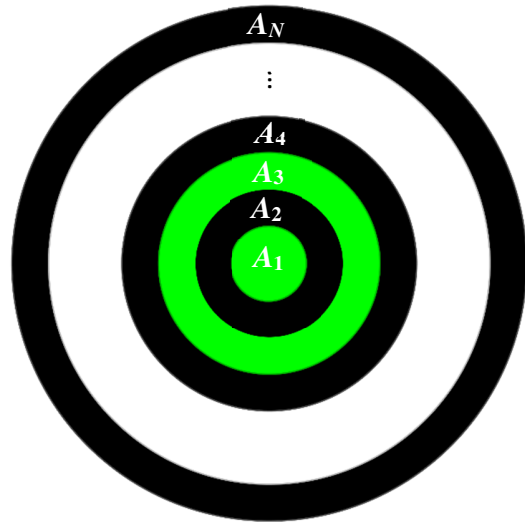


Fig. 2

The region enclosed by the circle C_1 is denoted by A_1 with area a_1 and the region between the circles C_{n-1} and C_n is denoted by A_n with area a_n for $n=2,3,4,\dots,N$, as shown in Fig. 2.

- (i) Show that the sequence $a_1, a_2, a_3, \dots, a_N$ is an arithmetic progression. [4]

With the help of a graphic software, Aden fills $A_1, A_2, A_3, \dots, A_N$ with two of the school colours: green and black. A_n will be filled green if n is odd and will be filled black if n is even.

Aden wishes to create a better visual effect by having different intensities of green. He fills A_1 with the green colour that is the same as the school colour. He reduces the intensity of this green colour by ten percent to fill A_3 ; and reduces the intensity of the green colour used to fill A_3 by ten percent to fill A_5 ; and this process continues for all odd values of n . When he finishes filling up all the areas, Aden finds that the intensity of the green colour that fills A_{N-1} falls below one quarter of the intensity of the school colour for the first time.

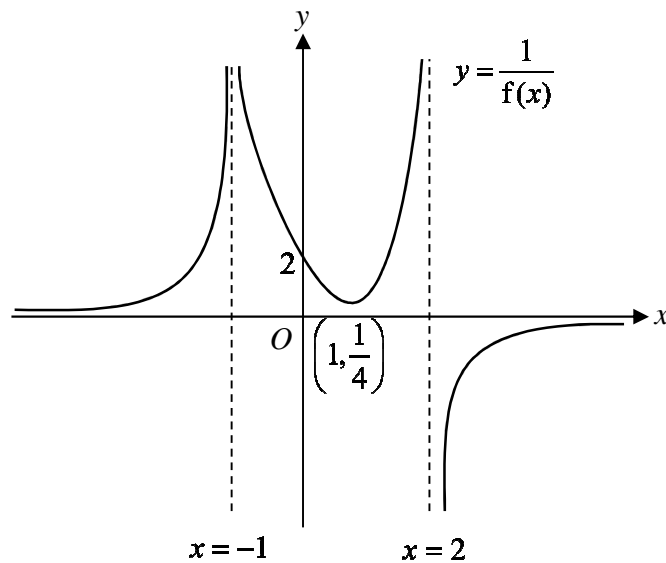
- (ii) Find the value of N . [4]

[Turn over

- 3 (a) Find $\int_0^1 \frac{9x-4x^2}{9-4x^2} dx$, giving your answer in the form $p+q\ln 3+r\ln 5$ where p , q and r are rational numbers to be determined.

- (b) Prove that $\sin 3x = 3\sin x - 4\sin^3 x$.
Hence, or otherwise, find $\int \sin x \sin 2x \sin 3x dx$. [4]

- 4 (a) The diagram below shows the curve of $y = \frac{1}{f(x)}$ where $f(x)$ is a polynomial. The curve has a minimum point at $\left(1, \frac{1}{4}\right)$ and cuts the y -axis at $(0, 2)$. The lines $x = -1$ and $x = 2$ are the vertical asymptotes and the line $y = 0$ is the horizontal asymptote to the curve.

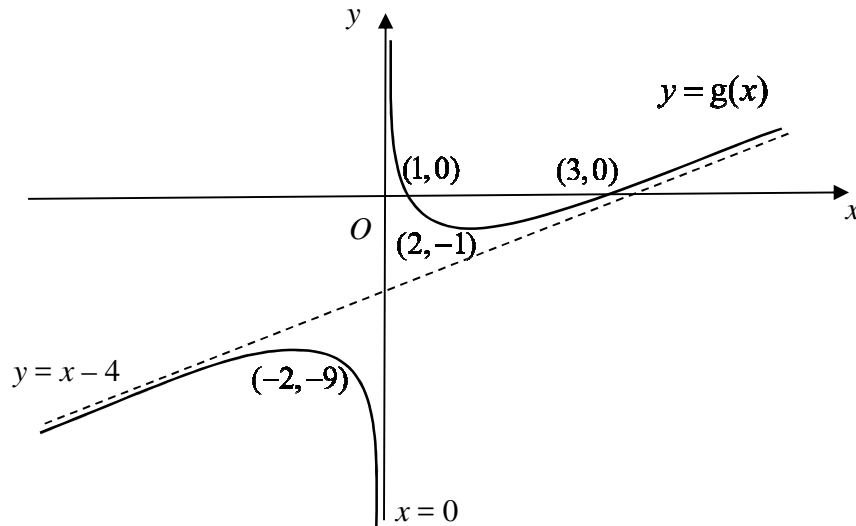


Sketch on separate diagrams, the graphs of

- (i) $y = f(x)$,
- (ii) $y = f(|x|)$,

labelling all relevant point(s).

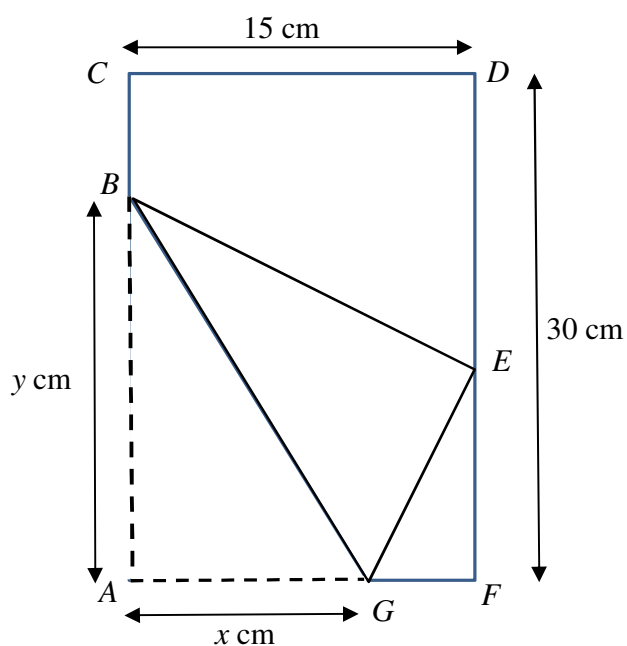
- 4 (b) The diagram below shows the curve of $y = g(x)$. The curve has a maximum point at $(-2, -9)$ and a minimum point at $(2, -1)$. The curve crosses the x -axis at $(1, 0)$ and $(3, 0)$. The line $x = 0$ is the vertical asymptote and the line $y = x - 4$ is the oblique asymptote to the curve.



- (i) Sketch the graph of $y = g'(x)$, labelling all relevant point(s) and stating the equations of any asymptotes.
- (ii) Find the area bounded by the graph of $y = g'(x)$, the lines $x = 1$, $x = 2$ and the x -axis.

[Turn over

5



Tom has a rectangular piece of paper $ACDF$ with length 30 cm and breadth 15 cm. He folds the lower left-hand corner, A , to reach the rightmost edge of the paper at E . After that he will cut out the triangle EFG and the trapezium $BCDE$ to obtain a kite shaped figure $ABEG$ with AB of length y cm and AG of length x cm.

- (i) Find the length of EF in terms of x . [2]
- (ii) Show that $y = \frac{x\sqrt{15}}{\sqrt{2x-15}}$. [2]
- (iii) Using differentiation, find the exact values of x and y which give the minimum area of the kite $ABEG$. [5]

- 6 (a) It is given that $e^y = \tan\left(x + \frac{\pi}{3}\right)$.
- (i) Show that $\frac{dy}{dx} = e^y + e^{-y}$.
- (ii) Using differentiation, find the Maclaurin series for $\ln\left[\tan\left(x + \frac{\pi}{3}\right)\right]$ up to and including the term in x^2 .
- (b) Let $f(x) = \frac{3x^2 - 4x + 5}{(1+x)(1-x)^2}$.
- (i) Express $f(x)$ in the form $\frac{A}{(1+x)} + \frac{B}{(1-x)} + \frac{C}{(1-x)^2}$ where A , B and C are constants to be determined. [2]
- (ii) Hence find the expansion of $f(x)$ up to and including the term in x^4 . [2]
- (iii) Write down the coefficient of x^r in the expansion of $f(x)$ in terms of r . [1]

7 **Do not use a calculator in answering this question.**

- (a) Find the roots of the equation $w^2(1-i) + 4w + (10+10i) = 0$, giving your answers in cartesian form $a+ib$. [3]
- (b) It is given that $z = -\sqrt{3} + i$.
- (i) Find an exact expression for z^5 . Give your answer in the form $re^{i\theta}$, where $r > 0$ and $-\pi < \theta \leq \pi$. [2]
- (ii) Find the three smallest positive whole number values of n for which $\frac{z^n}{iz^*}$ is purely imaginary. [4]
- (iii) Given that $\left|1 + \frac{p}{z^*}\right| = \sqrt{7}$, find exactly the possible values of the real number p . [3]

[Turn over

8 The function $f(x) = a - (1+x)^{\frac{1}{3}}$ is defined for $0 \leq x \leq 7$, where a is a positive real constant.

(i) Solve the inequality $f(x) \geq a-1$. [2]

(ii) Show that the graph of $y = f(x)$ has a negative gradient at all points on the graph. Find the range of f . [2]

Use $a = 3$ in the rest of the question.

(iii) Find $f^{-1}(x)$. [2]

(iv) Sketch on the same diagram the graphs of $y = f(x)$ and $y = f^{-1}(x)$, showing clearly the geometrical relationship between the two graphs and the line $y = x$. [3]

(v) Show that the x -coordinate of the point of intersection of the graphs of $y = f(x)$ and $y = f^{-1}(x)$ satisfies the equation $x^3 - 9x^2 + 28x - 26 = 0$.
Hence find the solution of the equation $f(x) = f^{-1}(x)$. [3]

9 (a) The variables x and y are related by the differential equation $\frac{dy}{dx} = \sqrt{x}e^{\sqrt{x}}$.

Using the substitution $u = \sqrt{x}$, show that $y = k \int u^2 e^u du$ where k is a constant to be determined. Hence find the general solution of the differential equation. [5]

(b) Ms Frugal bought a second-hand oven which has a broken timer. Each time she bakes she uses the timer on her handphone. One day, she decides to make a loaf of bread. She takes the fermented dough out of her refrigerator and checks that the internal temperature of the dough is 4°C . She puts it into the oven which has been pre-heated to a constant temperature of 180°C and forgets to set the timer on her handphone. She also does not note the time. At 10.06 am, she realizes that the timer has not been set. She checks her dough which now has an internal temperature of 80°C . Twenty minutes later, she checks the dough again and the internal temperature has risen to 130°C .

Newton's Law of Cooling states that the rate of increase of the temperature $\theta^\circ\text{C}$ of an object after t minutes is directly proportional to the difference in the temperatures of the object and its surrounding.

The dough has to be baked at a constant oven temperature of 180°C for one and a half hour to cook through. By forming a differential equation, find the time (to the nearest minute) that Ms Frugal should remove the dough from the oven.

[8]

- 10** Two children Hansel and Gretel are participating in the junior category of the Festival of Lights competition. They decided to set up a structure consisting of a pyramid with a rectangular base $OABC$ and vertex V . The main power supply switch is positioned at O with coordinates $(0, 0, 0)$ and relative to O , the coordinates of A and C are $(1, 2, 1)$ and $(-1, 1, -1)$ respectively. The vertex V is fixed at a height $\sqrt{8}$ metres above the rectangular base $OABC$ such that it is equidistant to the points O , A , B and C . All the surfaces of the pyramid, excluding the base $OABC$, are completely covered with LED (light emitting diodes) light strips so that it illuminates in the dark.

- (i) Point D is the foot of the perpendicular from V to the rectangular base $OABC$. Show that the coordinates of D is $(0, 1.5, 0)$. [1]
- (ii) Find a vector perpendicular to the rectangular base $OABC$. Hence, find the position vector of V , given that its \mathbf{k} -component is positive. [4]

Hansel and Gretel decide to install two different colour display schemes on the pyramid and the control switch is to be installed inside the pyramid at a point E with position vector $\alpha\mathbf{i} + 1.5\mathbf{j} - \alpha\mathbf{k}$, where α is a constant.

- (iii) Show that VE is perpendicular to the rectangular base $OABC$ and explain why $-2 < \alpha < 0$. [3]
- (iv) Find the distance between E and the surface OVA in terms of α , simplifying your answer. [4]
- (v) Given that the ratio of the distance between E and the rectangular base $OABC$ to the distance between E and the surface OVA is $10:\sqrt{105}$, find the value of α . [2]

***** End of Paper *****

2018 RI Prelim Exam Paper 1

1 Adult tickets for a parade are sold at three different prices, depending on the type of seats.

Children under the age of 12 and Senior Citizens aged 65 and above can enjoy 20% and 10% off the adult ticket prices respectively. Those who are between 12 and 64 years old (inclusive) will have to pay the full adult ticket price.

The number of tickets sold in each category for each group of people, together with the total cost of the tickets for each group, are given in the following table.

	Category 1 tickets (premier)	Category 2 tickets (sheltered)	Category 3 tickets (unsheltered)	Total cost
Adults (12 to 64 years old (inclusive))	150	120	200	\$18 000
Children (under 12 years old)	80	40	100	\$6 760
Senior Citizens (65 years old and above)	100	100	100	\$10 665

Write down and solve equations to find the price of an adult ticket for each of the ticket categories. [4]

1 [4]	Let the cost of an adult ticket for Category 1, 2 and 3 be \$ x , \$ y and \$ z respectively. $150x + 120y + 200z = 18000$ $80(0.8x) + 40(0.8y) + 100(0.8z) = 6760$ $100(0.9x) + 100(0.9y) + 100(0.9z) = 10665$ $x = 50, \quad y = 40, \quad z = 28.5$ <p>The cost of a Category 1, 2 and 3 adult ticket is \$50, \$40 and \$28.50 respectively.</p>
------------------------	--

- 2 Aden, a member of Raffles Art Club, is helping to design a graphic for the school's homecoming event. The main body of the graphic consists of N concentric circles $C_1, C_2, C_3, \dots, C_N$ with radii $r, 2r, 3r, \dots, Nr$, where r is a constant and N is an even integer, as shown in Fig. 1.

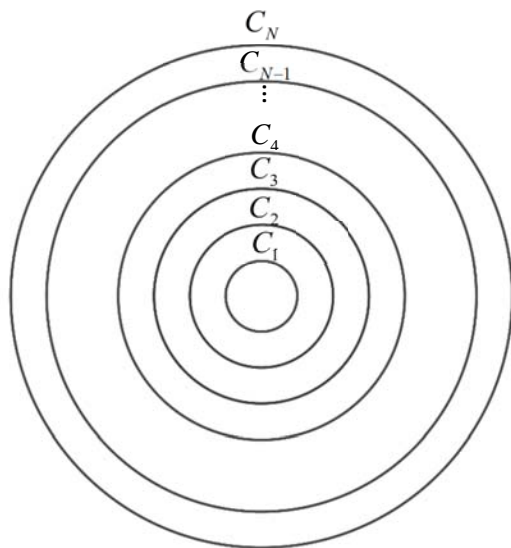


Fig. 1

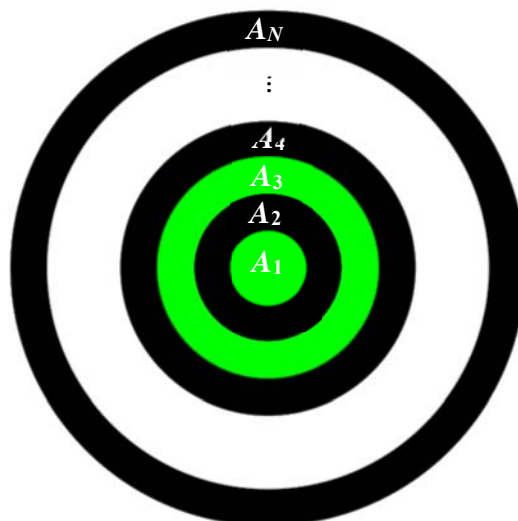


Fig. 2

The region enclosed by the circle C_1 is denoted by A_1 with area a_1 and the region between the circles C_{n-1} and C_n is denoted by A_n with area a_n for $n = 2, 3, 4, \dots, N$, as shown in Fig. 2.

- (i) Show that the sequence $a_1, a_2, a_3, \dots, a_N$ is an arithmetic progression. [4]

With the help of a graphic software, Aden fills $A_1, A_2, A_3, \dots, A_N$ with two of the school colours: green and black. A_n will be filled green if n is odd and will be filled black if n is even.

Aden wishes to create a better visual effect by having different intensities of green. He fills A_1 with the green colour that is the same as the school colour. He reduces the intensity of this green colour by ten percent to fill A_3 ; and reduces the intensity of the green colour used to fill A_3 by ten percent to fill A_5 ; and this process continues for all odd values of n . When he finishes filling up all the areas, Aden finds that the intensity of the green colour that fills A_{N-1} falls below one quarter of the intensity of the school colour for the first time.

- (ii) Find the value of N . [4]

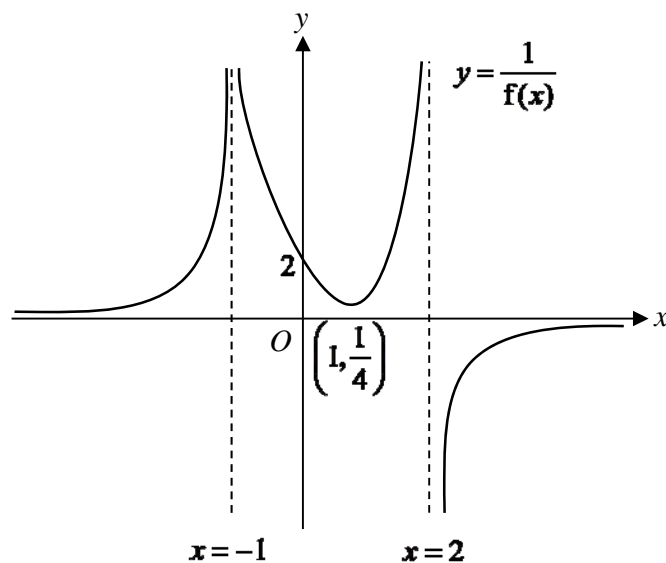
<p>2(i) [4]</p>	$a_n = \pi(nr)^2 - \pi[(n-1)r]^2 \quad \text{for } n = 2, 3, \dots, N$ $= \pi[nr - (n-1)r][nr + (n-1)r]$ $= \pi(r)(2nr - r)$ $= \pi r^2(2n - 1)$ $a_1 = \pi r^2 = \pi r^2(2 \times 1 - 1) \text{ and it follows the form } A_n = \pi r^2(2n - 1) \text{ when}$	<p>Read word problems carefully and clarify understanding of the symbols used.</p>
---------------------	--	--

	<p>$n = 1$.</p> <p>Therefore, $A_n = \pi r^2(2n-1)$ for $n = 1, 2, 3, \dots, N$.</p> <p>The difference between any two consecutive terms (for $n = 2, 3, \dots, N$)</p> $= a_n - a_{n-1}$ $= [\pi r^2(2n-1)] - \{\pi r^2[2(n-1)-1]\}$ $= 2\pi r^2$ <p>Since $2\pi r^2$ is independent of n, it is a constant.</p> <p>Since the difference between every two consecutive terms is constant, the sequence $a_1, a_2, a_3, \dots, a_N$ is an arithmetic progression. (shown)</p>	<p>Candidates mixed up the A_i's (name of regions) with the a_i's (area of the regions), incorrectly labelling $\pi r^2(2n-1) = A_n - A_{n-1}$ as a constant.</p> <p>Checking the first few terms of a sequence share a common difference to conclude that the sequence forms an arithmetic progression is NOT allowed</p>																																																												
<p>(ii) [4]</p>	<p>The intensity of green colour in area $A_1, A_3, A_5, \dots, A_n, \dots, A_{N-1}$, where n is an odd number, is:</p> <p>$1, 0.9, 0.9^2, \dots, 0.9^{\frac{N-2}{2}}$, which is a geometric progression</p> $0.9^{\frac{N-2}{2}} < 0.25$ $\frac{N-2}{2} > \frac{\ln 0.25}{\ln 0.9}$ $N > 28.315 \quad (5s.f.)$ <p>Since N is an even integer, $N = 30$.</p> <p>Alternative 1</p> <p>Since $\frac{N-2}{2}$ is an integer and $\frac{N-2}{2} > \frac{\ln 0.25}{\ln 0.9} = 13.158 \quad (5s.f.)$, then $\frac{N-2}{2} = 14 \Rightarrow N = 30$.</p> <p>Alternative 2</p> <table border="1" data-bbox="225 1400 687 1704"> <thead> <tr> <th>X</th> <th>Y1</th> <th></th> <th></th> <th></th> </tr> </thead> <tbody> <tr><td>26</td><td>0.2824</td><td></td><td></td><td></td></tr> <tr><td>27</td><td>0.2679</td><td></td><td></td><td></td></tr> <tr><td>28</td><td>0.2542</td><td></td><td></td><td></td></tr> <tr><td>29</td><td>0.2411</td><td></td><td></td><td></td></tr> <tr><td>30</td><td>0.2288</td><td></td><td></td><td></td></tr> <tr><td>31</td><td>0.217</td><td></td><td></td><td></td></tr> <tr><td>32</td><td>0.2059</td><td></td><td></td><td></td></tr> <tr><td>33</td><td>0.1953</td><td></td><td></td><td></td></tr> <tr><td>34</td><td>0.1853</td><td></td><td></td><td></td></tr> <tr><td>35</td><td>0.1758</td><td></td><td></td><td></td></tr> <tr><td>36</td><td>0.1668</td><td></td><td></td><td></td></tr> </tbody> </table> <p>X=26</p> <p>From GC, (N is an even integer)</p> <p>when $N = 28$, $0.9^{\frac{N-2}{2}} = 0.2542 > 0.25$;</p> <p>when $N = 30$, $0.9^{\frac{N-2}{2}} = 0.2288 < 0.25$.</p> <p>$\therefore N = 30$</p>	X	Y1				26	0.2824				27	0.2679				28	0.2542				29	0.2411				30	0.2288				31	0.217				32	0.2059				33	0.1953				34	0.1853				35	0.1758				36	0.1668				<p>Candidate should take note of the alternative solutions.</p> <p>Two common mistakes committed were failing to flip the inequality sign when dividing by $\ln(0.9)$, a negative number, and forgetting that N is an even number, thus concluding that the least value of N is 29 instead of 30.</p>
X	Y1																																																													
26	0.2824																																																													
27	0.2679																																																													
28	0.2542																																																													
29	0.2411																																																													
30	0.2288																																																													
31	0.217																																																													
32	0.2059																																																													
33	0.1953																																																													
34	0.1853																																																													
35	0.1758																																																													
36	0.1668																																																													

Alternatively

$$\begin{aligned} & \int \sin x \sin 2x \sin 3x \, dx \\ &= -\frac{1}{2} \int (\cos 4x - \cos 2x) \sin 2x \, dx \\ &= -\frac{1}{2} \int (\sin 2x \cos 4x - \sin 2x \cos 2x) \, dx \\ &= -\frac{1}{2} \int (\sin 2x(2\cos^2 2x - 1) - \sin 2x \cos 2x) \, dx \\ &= -\int \sin 2x \cos^2 2x \, dx + \frac{1}{2} \int \sin 2x \, dx + \frac{1}{4} \int \sin 4x \, dx \\ &= -\int \sin 2x \cos^2 2x \, dx + \frac{1}{2} \int \sin 2x \, dx + \frac{1}{4} \int \sin 4x \, dx \\ &= \frac{1}{6} \cos^3 2x - \frac{1}{4} \cos 2x - \frac{1}{16} \cos 4x + c \end{aligned}$$

- 4 (a) The diagram below shows the curve of $y = \frac{1}{f(x)}$ where $f(x)$ is a polynomial. The curve has a minimum point at $\left(1, \frac{1}{4}\right)$ and cuts the y -axis at $(0, 2)$. The lines $x = -1$ and $x = 2$ are the vertical asymptotes and the line $y = 0$ is the horizontal asymptote to the curve.

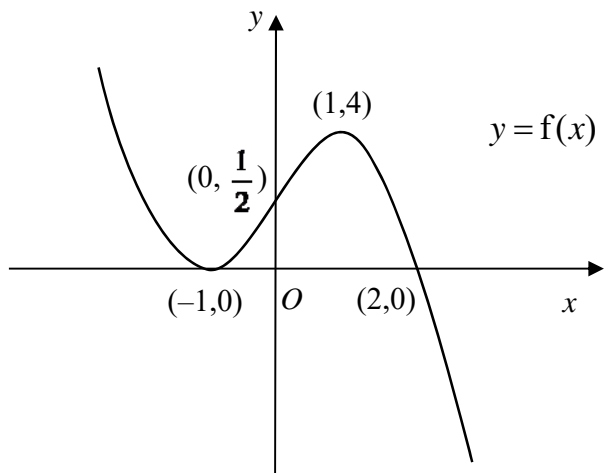
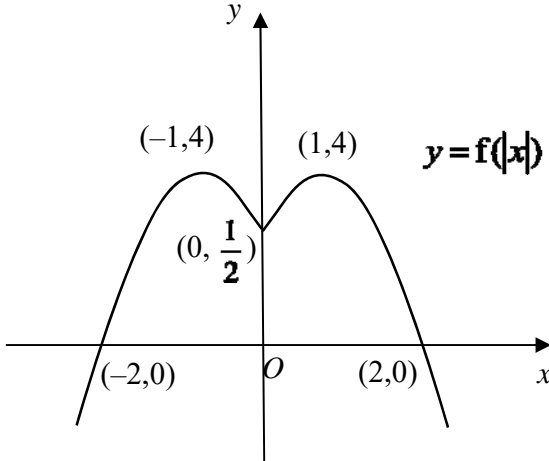


Sketch on separate diagrams, the graphs of

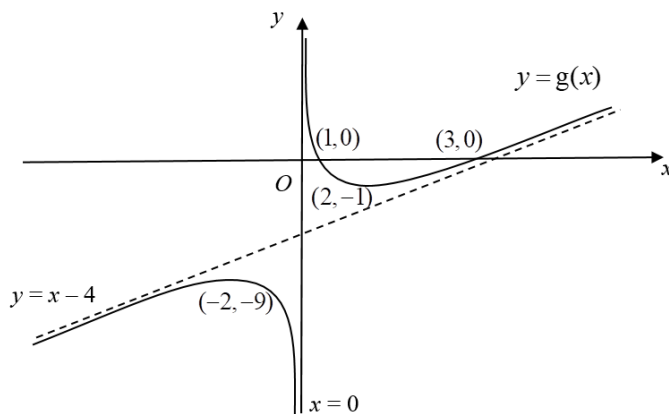
(i) $y = f(x)$,

(ii) $y = f(|x|)$,

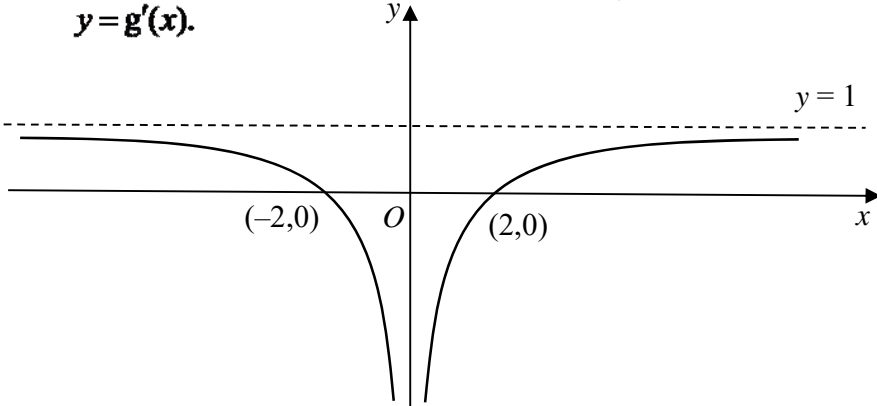
Labelling all relevant point(s).

<p>4a (i) [3]</p>		<p>The fact that $f(x)$ is a polynomial means that the curve will be smooth. (no “holes” or “open circles” at the x-intercepts)</p>
<p>(ii) [2]</p>		

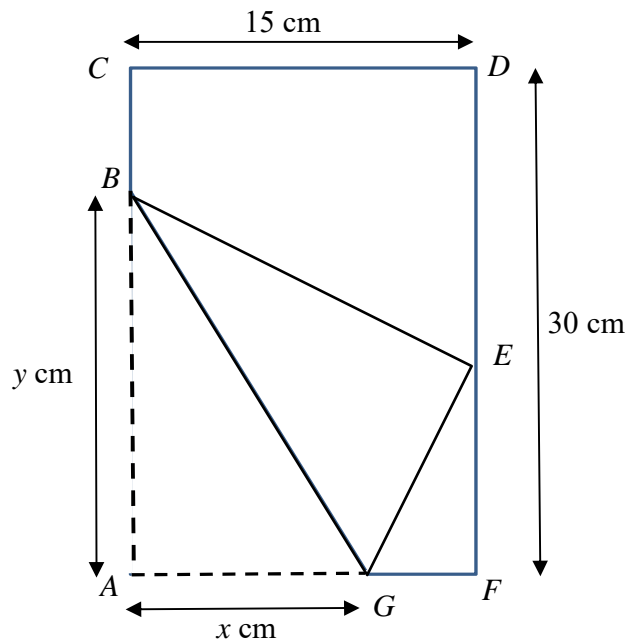
- (b)** The diagram below shows the curve of $y = g(x)$. The curve has a maximum point at $(-2, -9)$ and a minimum point at $(2, -1)$. The curve crosses the x -axis at $(1, 0)$ and $(3, 0)$. The line $x = 0$ is the vertical asymptote and the line $y = x - 4$ is the oblique asymptote to the curve.



- (i)** Sketch the graph of $y = g'(x)$, labelling all relevant point(s) and stating the equations of any asymptotes.
- (ii)** Find the area bounded by the graph of $y = g'(x)$, the lines $x = 1$, $x = 2$ and the x -axis. [2]

(b) [4]	$y = g'(x).$ 	Key features of the derivative graph, such as the asymptotes and intercepts, must be included. The Fundamental Theorem of Calculus provides the link between the derivative function and integral. Note the negative sign for the required area.
Required area = $\int_1^2 g'(x) dx = -[g(x)]_1^2$ $= -[g(2) - g(1)]$ $= -[-1 - 0] = 1$		

5



Tom has a rectangular piece of paper $ACDF$ with length 30 cm and breadth 15 cm. He folds the lower left-hand corner, A , to reach the rightmost edge of the paper at E . After that he will cut out the triangle EFG and the trapezium $BCDE$ to obtain a kite shaped figure $ABEG$ with AB of length y cm and AG of length x cm.

- (i) Find the length of EF in terms of x . [2]
- (ii) Show that $y = \frac{x\sqrt{15}}{\sqrt{2x-15}}$. [2]
- (iii) Using differentiation, find the exact values of x and y which give the minimum area of the kite $ABEG$. [5]

5(i)	Let the length of EF be w	Pythagoras
-------------	-------------------------------	------------

$$\Rightarrow A^2 = \frac{15x^4}{2x-15}$$

$$\Rightarrow 2A \frac{dA}{dx} = \frac{60x^3(2x-15) - 2(15x^4)}{(2x-15)^2}$$

For stationary value, $\frac{dA}{dx} = 0$

$$\Rightarrow 30x^3 [2(2x-15) - x] = 0$$

$$\Rightarrow x = 0 \text{ (reject) or } x = 10$$

When $x = 10$, $y = \frac{10\sqrt{15}}{\sqrt{5}} = 10\sqrt{3}$

Method 2 (find stationary point)

$$\therefore A = \frac{x^2\sqrt{15}}{\sqrt{2x-15}} = \sqrt{15}x^2(2x-15)^{-\frac{1}{2}}$$

$$\therefore \frac{dA}{dx} = 2\sqrt{15}x(2x-15)^{-\frac{1}{2}} + \sqrt{15}x^2 \left[-\frac{1}{2}(2x-15)^{-\frac{3}{2}}(2) \right]$$

$$\Rightarrow \frac{dA}{dx} = x\sqrt{15}(2x-15)^{-\frac{3}{2}} [2(2x-15) - x]$$

$$\Rightarrow \frac{dA}{dx} = x\sqrt{15}(2x-15)^{-\frac{3}{2}} [3x-30]$$

For stationary value, $\frac{dA}{dx} = 0$

$$\Rightarrow x\sqrt{15}(2x-15)^{-\frac{3}{2}} [3x-30] = 0$$

$$\Rightarrow x = 0 \text{ (reject) or } x = 10$$

When $x = 10$, $y = \frac{10\sqrt{15}}{\sqrt{5}} = 10\sqrt{3}$

Method 1 (Determine nature of stationary point)

Using Second Derivative Test

$$\begin{aligned} \frac{d^2A}{dx^2} &= \sqrt{15} \left(-\frac{3}{2} \right) (2x-15)^{-\frac{5}{2}} [3x^2 - 30x] + \sqrt{15} (2x-15)^{-\frac{3}{2}} [6x-30] \\ &= 10.3923 > 0 \end{aligned}$$

Therefore $x = 10$, $y = 10\sqrt{3}$ gives the minimum area of the kite.

Method 2 (Determine nature of stationary point)

Using first derivative test

	$x = 10^-$	$x = 10$	$x = 10^+$
x	+ve	+ve	+ve
$3(x-10)$	-ve	0	+ve
$\frac{dA}{dx} = x\sqrt{15}(2x-15)^{-\frac{3}{2}} [3x-30]$	-ve	0	+ve

We conclude that $x = 10$, $y = 10\sqrt{3}$ gives the minimum area of the kite.

Marker Comments for Students

(iii) Candidate should read the question carefully as many erroneously minimized y instead of the area. Many students also have the **misconception** that since the question asked for a minimum area, they do not have to verify it. **Do note that for any max/min questions, showing that it is a min/max is a MUST.** 2nd Derivative test might be easier here.

For students who use the first derivative test, you need to identify the factor that resulted in the sign change. This table alone is not good enough.

	$x = 10^-$	$x = 10$	$x = 10^+$
$\frac{dA}{dx} = x\sqrt{15}(2x-15)^{-\frac{3}{2}}[3x-30]$	-ve	0	+ve

6 (a) It is given that $e^y = \tan\left(x + \frac{\pi}{3}\right)$.

(i) Show that $\frac{dy}{dx} = e^y + e^{-y}$. [2]

(ii) Using differentiation, find the Maclaurin series for $\ln\left[\tan\left(x + \frac{\pi}{3}\right)\right]$ up to and including the term in x^2 . [3]

(b) Let $f(x) = \frac{3x^2 - 4x + 5}{(1+x)(1-x)^2}$.

(i) Express $f(x)$ in the form $\frac{A}{(1+x)} + \frac{B}{(1-x)} + \frac{C}{(1-x)^2}$ where A, B and C are constants to be determined. [2]

(ii) Hence find the expansion of $f(x)$ up to and including the term in x^4 . [2]

(iii) Write down the coefficient of x^r in the expansion of $f(x)$ in terms of r . [1]

<p>6a(i) [2]</p>	$e^y = \tan\left(x + \frac{\pi}{3}\right)$ <p>Differentiate with respect to x</p> $e^y \frac{dy}{dx} = \sec^2\left(x + \frac{\pi}{3}\right)$ $e^y \frac{dy}{dx} = 1 + \tan^2\left(x + \frac{\pi}{3}\right)$ $e^y \frac{dy}{dx} = 1 + e^{2y}$ $\frac{dy}{dx} = e^y + e^{-y}$	<p>Implicit differentiation/ chain rule $\frac{d}{dx}e^y = e^y \frac{dy}{dx}$</p> <p>and $\frac{d}{dx}e^{-y} = -e^{-y} \frac{dy}{dx}$.</p> <p>Recall the trigo identity $\sec^2 \theta = \tan^2 \theta + 1$</p>
-----------------------------	--	--

<p>(ii) [3]</p>	$\frac{dy}{dx} = e^y + e^{-y}$ $\frac{d^2y}{dx^2} = e^y \frac{dy}{dx} - e^{-y} \frac{dy}{dx}$ <p>When $x = 0$, $e^y = \tan \frac{\pi}{3} \Rightarrow y = \ln(\sqrt{3}) = \frac{1}{2} \ln 3$</p> $\frac{dy}{dx} = e^{\frac{1}{2} \ln 3} + e^{-\frac{1}{2} \ln 3} \Rightarrow \frac{dy}{dx} = \sqrt{3} + \frac{1}{\sqrt{3}} = \frac{4}{\sqrt{3}}$ $\frac{d^2y}{dx^2} = \frac{4}{\sqrt{3}} \left(\sqrt{3} - \frac{1}{\sqrt{3}} \right) = \frac{8}{3}$ $\ln \left[\tan \left(x + \frac{\pi}{3} \right) \right] = \frac{1}{2} \ln 3 + \frac{4}{\sqrt{3}} x + \frac{8}{2!} x^2 + \dots = \frac{1}{2} \ln 3 + \frac{4}{\sqrt{3}} x + \frac{4}{3} x^2$	<p>Note the significance of finding the expression in part (i) here to find $\frac{d^2y}{dx^2}$</p> <p>Simplify all algebraic expressions.</p>
<p>b(i) [2]</p>	$\frac{3x^2 - 4x + 5}{(1+x)(1-x)^2} = \frac{A}{1+x} + \frac{B}{1-x} + \frac{C}{(1-x)^2}$ $3x^2 - 4x + 5 = A(1-x)^2 + B(1+x)(1-x) + C(1+x)$ <p>When $x = 1$, $3 - 4 + 5 = 2C \Rightarrow C = 2$</p> <p>$x = -1$, $3 + 4 + 5 = 4A \Rightarrow A = 3$</p> <p>$x = 0$, $5 = A + B + C \Rightarrow B = 0$</p>	<p>Candidates must show more care in getting the correct partial fractions.</p>
<p>(ii) [2]</p>	$\frac{3}{(1+x)} + \frac{2}{(1-x)^2} = 3(1+x)^{-1} + 2(1-x)^{-2}$ $= 3(1-x+x^2-x^3+x^4+\dots)$ $+ 2 \left(1 + 2x + \frac{-2(-3)}{2!} x^2 + \frac{-2(-3)(-4)}{3!} (-x)^3 + \frac{-2(-3)(-4)(-5)}{4!} (-x)^4 + \dots \right)$ $= 3(1-x+x^2-x^3+x^4+\dots) + 2(1+2x+3x^2+4x^3+5x^4+\dots)$ $= 5 + x + 9x^2 + 5x^3 + 13x^4 + \dots$	<p>Binomial series expansion from MF26.</p>
<p>(iii) [1]</p>	<p>The coefficient of x^r is $= 3(-1)^r + 2(r+1)$</p>	<p>Candidates to note general term.</p>

7

Do not use a calculator in answering this question.

(a) Find the roots of the equation $w^2(1-i) + 4w + (10+10i) = 0$, giving your answers in cartesian form $a+ib$. [3]

(b) It is given that $z = -\sqrt{3} + i$.

(i) Find an exact expression for z^5 . Give your answer in the form $re^{i\theta}$, where $r > 0$ and $-\pi < \theta \leq \pi$. [2]

(ii) Find the three smallest positive whole number values of n for which $\frac{z^n}{iz^*}$ is purely imaginary. [4]

- (iii) Given that $\left|1 + \frac{p}{z^*}\right| = \sqrt{7}$, find exactly the possible values of the real number p . [3]

<p>7(a) [3]</p>	$w^2(1-i) + 4w + (10+10i) = 0$ $w = \frac{-4 \pm \sqrt{4^2 - 4(1-i)(10+10i)}}{2(1-i)}$ $= \frac{-4 \pm \sqrt{16 - 40(1-i)(1+i)}}{2(1-i)}$ $= \frac{-4 \pm \sqrt{16 - 40(2)}}{2(1-i)}$ $= \frac{-4 \pm \sqrt{-64}}{2(1-i)}$ $= \frac{-4 \pm 8i}{2(1-i)} \times \frac{1+i}{1+i}$ $= (-1 \pm 2i)(1+i)$ $w = (-1 + 2i)(1+i) \quad \text{or} \quad w = (-1 - 2i)(1+i)$ $= -1 - i + 2i + 2i^2 \quad \quad \quad = -1 - i - 2i - 2i^2$ $= -3 + i \quad \quad \quad \quad \quad = 1 - 3i$	<p>Use quadratic formula. Recall Y6 CT2.</p> <p>The simplification of the intermediate answers $\frac{-4 \pm 8i}{2(1-i)}$ must be shown as the use of calculator is not allowed.</p>
<p>(b) (i) [2]</p>	<p>Given $z = -\sqrt{3} + i$, $z = 2$, $\arg(z) = \frac{5\pi}{6}$</p> <p>Method 1 :</p> $ z^5 = 2^5 = 32$ $\arg(z^5) = 5 \arg(z) - 4\pi$ $= 5 \left(\frac{5\pi}{6} \right) - 4\pi$ $= \frac{25\pi}{6} - 4\pi$ $= \frac{\pi}{6}$ $\therefore z^5 = 32e^{i\frac{\pi}{6}}$ <p>Method 2 :</p> $z^5 = \left(2e^{i\frac{5\pi}{6}} \right)^5$ $= 2^5 e^{i\left(\frac{25\pi}{6} - 4\pi\right)}$ $= 32e^{i\frac{\pi}{6}}$	

(ii)
[4]

$$\begin{aligned}\frac{z^n}{iz^*} &= \frac{2^n e^{i\frac{5n\pi}{6}}}{e^{i\frac{\pi}{2}} 2e^{-i\frac{5\pi}{6}}} \\ &= 2^{n-1} e^{i(\frac{5n\pi}{6} - \frac{\pi}{2} + \frac{5\pi}{6})} \\ &= 2^{n-1} e^{i\frac{(5n+2)\pi}{6}}\end{aligned}$$

Alternatively : Just determine $\arg\left(\frac{z^n}{iz^*}\right)$

$$\begin{aligned}&n \arg(z) - \arg(i) - \arg(z^*) \\ &= n\left(\frac{5\pi}{6}\right) - \frac{\pi}{2} + \frac{5\pi}{6} \quad \text{since } \arg(z^*) = -\arg(z) = -\frac{5\pi}{6} \\ &= \left(\frac{5n+2}{6}\right)\pi\end{aligned}$$

For $\frac{z^n}{iz^*}$ to be purely imaginary,

$$\begin{aligned}\cos\left(\frac{5n+2}{6}\right)\pi &= 0 \\ \left(\frac{5n+2}{6}\right)\pi &= (2k+1)\frac{\pi}{2}, \quad k \in \mathbb{Z} \\ 5n+2 &= 3(2k+1) \\ n &= \frac{6k+1}{5}\end{aligned}$$

\therefore The three smallest positive whole number values of n are 5, 11, 17.

Note that n is a positive integer.

OR alternatively

$$\frac{z^n}{iz^*} = \frac{-iz^{n+1}}{|z|^2} = -2^{n-1}ie^{i\frac{5(n+1)\pi}{6}}$$

For $\frac{z^n}{iz^*}$ to be purely imaginary,

$$\begin{aligned}\sin\left(\frac{5n+5}{6}\right)\pi &= 0, \quad k \in \mathbb{Z} \\ \left(\frac{5n+5}{6}\right)\pi &= k\pi, \quad k \in \mathbb{Z} \\ 5n &= 6k - 5 \\ n &= \frac{6k}{5} - 1\end{aligned}$$

\therefore The three smallest positive whole number values of n are 5, 11, 17.

<p>(iii)</p>	$\left 1 + \frac{p}{z^*}\right = \sqrt{7} \Leftrightarrow \left \frac{z^* + p}{z^*}\right = \sqrt{7}$ $\frac{ -\sqrt{3} - i + p }{ z^* } = \sqrt{7}$ $\left (-\sqrt{3} + p) - i\right = 2\sqrt{7} \quad \text{since } z^* = z = 2$ $(-\sqrt{3} + p)^2 + (-1)^2 = (2\sqrt{7})^2$ $(-\sqrt{3} + p)^2 = 27$ $-\sqrt{3} + p = \pm\sqrt{27}$ $p = \sqrt{3} \pm 3\sqrt{3}$ <p>$\therefore p = 4\sqrt{3}$ or $-2\sqrt{3}$</p>	<p>Simplify algebraic expressions</p>
	<p>Marker Comments for Students</p> <p>(iii) Candidates should understand why</p> <p>(a) $\left 1 + \frac{p}{z^*}\right \neq 1 + \left \frac{p}{z^*}\right$</p> <p>(b) $\left 1 + \frac{p}{z^*}\right ^2 \neq \left(1 + \frac{p}{z^*}\right)^2$</p> <p>(c) $\left 1 + \frac{p}{z^*}\right = \sqrt{7}$ does not imply $1 + \frac{p}{z^*} = \pm\sqrt{7}$</p>	

8 The function $f(x) = a - (1+x)^{\frac{1}{3}}$ is defined for $0 \leq x \leq 7$, where a is a positive real constant.

(i) Solve the inequality $f(x) \geq a - 1$. [2]

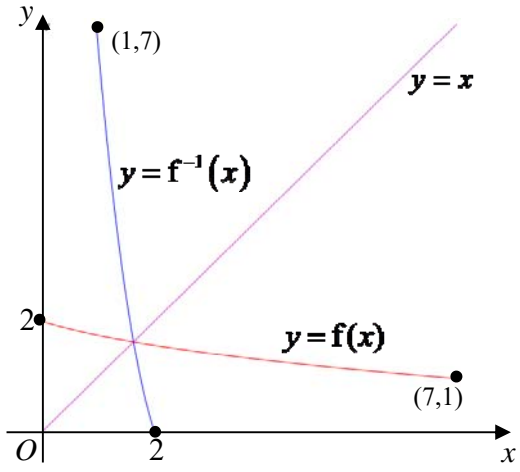
(ii) Show that the graph of $y = f(x)$ has a negative gradient at all points on the graph. Find the range of f . [2]

Use $a = 3$ in the rest of the question.

(iii) Find $f^{-1}(x)$. [2]

(iv) Sketch on the same diagram the graphs of $y = f(x)$ and $y = f^{-1}(x)$, showing clearly the geometrical relationship between the two graphs and the line $y = x$. [3]

(v) Show that the x -coordinate of the point of intersection of the graphs of $y = f(x)$ and $y = f^{-1}(x)$ satisfies the equation $x^3 - 9x^2 + 28x - 26 = 0$. Hence find the solution of the equation $f(x) = f^{-1}(x)$. [3]

8(i) [2]	$a - (1+x)^{\frac{1}{3}} \geq a - 1$ $(1+x)^{\frac{1}{3}} \leq 1$ $x \leq 0$ <p>But $0 \leq x \leq 7$, Solution is $x = 0$</p>	Note the restriction on solutions for x because of the domain of f .
(ii) [2]	$f'(x) = -\frac{1}{3}(1+x)^{-\frac{2}{3}} = -\frac{1}{3} \left(\frac{1}{\sqrt[3]{(1+x)}} \right)^2 < 0$ <p>Thus, the graph of $y = f(x)$ has a negative gradient at all points on the graph Since f is continuous and decreasing over $0 \leq x \leq 7$, $f(7) \leq f(x) \leq f(0)$ $a - 2 \leq f(x) \leq a - 1$ $\therefore R_f = [a - 2, a - 1]$</p>	
(iii) [2]	$y = 3 - (1+x)^{\frac{1}{3}}$ $1+x = (3-y)^3$ $x = (3-y)^3 - 1$ $f^{-1}(x) = (3-x)^3 - 1$	Make x the subject
(iv) [3]		Use the same scale along the x and y axis. Note the domain of f and indicate the end points. Draw a sketch so that the curves appear as reflections about $y=x$. Make sure the graphs do not “violate the vertical line test”
(v) [3]	<p>From the graphs of $y = f(x)$ and $y = f^{-1}(x)$, we see that $f(x) = f^{-1}(x)$ exactly where $f^{-1}(x) = x$.</p> $(3-x)^3 - 1 = x$ $27 - 27x + 9x^2 - x^3 - 1 = x$ $x^3 - 9x^2 + 28x - 26 = 0 \text{ (shown)}$ <p>From GC, $x = 1.62$ (3sf)</p>	Do not include complex solutions!

9 (a) The variables x and y are related by the differential equation $\frac{dy}{dx} = \sqrt{x}e^{\sqrt{x}}$. Using the substitution $u = \sqrt{x}$, show that $y = k \int u^2 e^u du$ where k is a constant to be determined. Hence find the general solution of the differential equation.[5]

(b) Ms Frugal bought a second-hand oven which has a broken timer. Each time she bakes she uses the timer on her handphone. One day, she decides to make a loaf of bread. She takes the fermented dough out of her refrigerator and checks that the internal temperature of the dough is 4°C . She puts it into the oven which has been pre-heated to a constant temperature of 180°C and forgets to set the timer on her handphone. She also does not note the time. At 10.06 am, she realizes that the timer has not been set. She checks her dough which now has an internal temperature of 80°C . Twenty minutes later, she checks the dough again and the internal temperature has risen to 130°C .

Newton's Law of Cooling states that the rate of increase of the temperature $\theta^\circ\text{C}$ of an object after t minutes is directly proportional to the difference in the temperatures of the object and its surrounding.

The dough has to be baked at a constant oven temperature of 180°C for one and a half hour to cook through. By forming a differential equation, find the time (to the nearest minute) that Ms Frugal should remove the dough from the oven.[8]

<p>9(a) [5]</p>	$u = \sqrt{x} \Rightarrow \frac{du}{dx} = \frac{1}{2\sqrt{x}} \Rightarrow dx = 2u du$ $\frac{dy}{dx} = \sqrt{x}e^{\sqrt{x}}$ $y = \int \sqrt{x}e^{\sqrt{x}} dx$ $= \int ue^u \cdot 2u du$ $= 2 \int u^2 e^u du$ $= 2(u^2 e^u - 2 \int ue^u du)$ $= 2u^2 e^u - 4(ue^u - \int e^u du)$ $= 2u^2 e^u - 4ue^u + 4e^u + c$ $= 2xe^{\sqrt{x}} - 4\sqrt{x}e^{\sqrt{x}} + 4e^{\sqrt{x}} + c$	<p>Substitution technique for DE</p> <p>Integration by parts</p> <p>Final expression for y in terms of x</p>
<p>9(b) [8]</p>	$\frac{d\theta}{dt} = k(180 - \theta) \text{ where } k \text{ is positive}$ $\int \frac{1}{180 - \theta} d\theta = \int k dt$ $-\ln(180 - \theta) = kt + c, \text{ where } \theta < 180$ <p>When $t = 0, \theta = 4,$</p> $c = -\ln 176$ $\therefore -\ln(180 - \theta) = kt - \ln 176$	<p>Minus sign or $+c$ being omitted in $-\ln(180 - \theta) = kt + c$ should be avoided.</p> <p>Absolute value for $180 - \theta$ is not</p>

<p>Let t_0 be the time elapsed from 4°C to 80°C.</p> <p>When $t = t_0, \theta = 80$,</p> $-\ln 100 = kt_0 - \ln 176 \Rightarrow kt_0 = \ln \frac{44}{25} \quad \dots(1)$ <p>When $t = t_0 + 20, \theta = 130$,</p> $-\ln 50 = k(t_0 + 20) - \ln 176 \Rightarrow k(t_0 + 20) = \ln \frac{88}{25} \quad \dots(2)$ <p>By (1) and (2), $\frac{t_0}{t_0 + 20} = \frac{\ln \frac{44}{25}}{\ln \frac{88}{25}}$</p> $t_0 = 16.312 \text{ (5s.f)}$ <p>Remaining number of minutes in oven after 10.06am $= 90 - 16.312$ $= 73.688 \text{ mins}$</p> <p>Thus the time that Ms Frugal should take out the dough is 11.20am.</p> <p>Alternative</p> $\frac{d\theta}{dt} = k(180 - \theta) \text{ where } k \text{ is positive}$ $\int \frac{1}{180 - \theta} d\theta = \int k dt$ $-\ln(180 - \theta) = kt + c, \text{ where } \theta < 180$ <p>When $t = 0, \theta = 80$,</p> $c = -\ln 100$ $\therefore -\ln(180 - \theta) = kt - \ln 100$ <p>When $t = 20, \theta = 130$,</p> $-\ln 50 = k(20) - \ln 100$ $k = \frac{\ln 2}{20}$ $\therefore -\ln(180 - \theta) = \left(\frac{\ln 2}{20}\right)t - \ln 100$ <p>When $\theta = 4$,</p> $-\ln 176 = \left(\frac{\ln 2}{20}\right)t - \ln 100$ $t = -16.312$ <p>Remaining number of minutes in oven after 10.06am $= 90 - 16.312$ $= 73.688 \text{ mins}$</p> <p>Thus the time that Ms Frugal should take out the dough is 11.20am.</p>	<p>necessary since $180 - \theta > 0$ from the context of the question.</p> <p>The time elapsed between 4°C and 130°C should be $t_0 + 20$ where t_0 is the time taken for the temperature to increase from 4°C to 80°C.</p> <p>The time required can be obtained without making θ the subject of the formula.</p>
---	--

	<p>words, D is the midpoint of AC.</p> $\overrightarrow{OD} = \frac{1}{2}(\overrightarrow{OA} + \overrightarrow{OC}) = \frac{1}{2} \left[\begin{pmatrix} 1 \\ 2 \\ 1 \end{pmatrix} + \begin{pmatrix} -1 \\ 1 \\ -1 \end{pmatrix} \right] = \begin{pmatrix} 0 \\ 1.5 \\ 0 \end{pmatrix}$ <p>\therefore Co-ordinates of D is $(0, 1.5, 0)$. (shown)</p>	Use the Ratio Theorem to find the midpoint easily.
(ii) [4]	<p>A vector perpendicular to $OABC$</p> $= \overrightarrow{OA} \times \overrightarrow{OC} = \begin{pmatrix} 1 \\ 2 \\ 1 \end{pmatrix} \times \begin{pmatrix} -1 \\ 1 \\ -1 \end{pmatrix} = \begin{pmatrix} -3 \\ 0 \\ 3 \end{pmatrix}$ <p>Since the k-component of V is positive, $\overrightarrow{DV} = \frac{\sqrt{8}}{\sqrt{2}} \begin{pmatrix} -1 \\ 0 \\ 1 \end{pmatrix} = \begin{pmatrix} -2 \\ 0 \\ 2 \end{pmatrix}$</p> $\overrightarrow{DV} = \overrightarrow{OV} - \overrightarrow{OD}$ $\overrightarrow{OV} = \begin{pmatrix} -2 \\ 0 \\ 2 \end{pmatrix} + \begin{pmatrix} 0 \\ 1.5 \\ 0 \end{pmatrix} = \begin{pmatrix} -2 \\ 1.5 \\ 2 \end{pmatrix}$	<p>Cross 2 vectors parallel to the plane $OABC$ which are <i>non-parallel</i> to each other. Easiest to use the given vectors \overrightarrow{OA} and \overrightarrow{OC}.</p> <p>Common mistakes include</p> $\overrightarrow{VD} = \begin{pmatrix} 0 \\ 1.5 \\ 0 \end{pmatrix} + \lambda \begin{pmatrix} 1 \\ 0 \\ -1 \end{pmatrix},$ $ \overrightarrow{OV} = \sqrt{8} \text{ and } \overrightarrow{OV} = \begin{pmatrix} x \\ y \\ \sqrt{8} \end{pmatrix}.$
(iii) [2]	<p>Method 1:</p> $\overrightarrow{VE} = \overrightarrow{OE} - \overrightarrow{OV} = \begin{pmatrix} \alpha \\ 1.5 \\ -\alpha \end{pmatrix} - \begin{pmatrix} -2 \\ 1.5 \\ 2 \end{pmatrix} = \begin{pmatrix} \alpha + 2 \\ 0 \\ -\alpha - 2 \end{pmatrix} = (\alpha + 2) \begin{pmatrix} 1 \\ 0 \\ -1 \end{pmatrix}$ <p>Since $(\alpha + 2)$ is a constant, \overrightarrow{VE} is parallel to $\begin{pmatrix} 1 \\ 0 \\ -1 \end{pmatrix}$, a vector normal to the plane $OABC$. Thus VE is perpendicular to the rectangular base $OABC$ (shown).</p> <p>Method 2:</p> $\overrightarrow{VE} \cdot \overrightarrow{OA} = (\alpha + 2) \begin{pmatrix} 1 \\ 0 \\ -1 \end{pmatrix} \cdot \begin{pmatrix} 1 \\ 2 \\ 1 \end{pmatrix} = (\alpha + 2)(1 - 1) = 0$ $\overrightarrow{VE} \cdot \overrightarrow{OC} = (\alpha + 2) \begin{pmatrix} 1 \\ 0 \\ -1 \end{pmatrix} \cdot \begin{pmatrix} -1 \\ 1 \\ -1 \end{pmatrix} = (\alpha + 2)(-1 + 1) = 0$ <p>Since \overrightarrow{VE} is perpendicular to \overrightarrow{OA} and \overrightarrow{OC}, which are two non-parallel vectors parallel to plane $OABC$, VE is perpendicular to the rectangular base $OABC$ (shown).</p> <p>Method 1:</p>	<p>To show 2 vectors are parallel, express one as a multiple of the other.</p> <p>[Incorrect to write</p> $\overrightarrow{VE} = \begin{pmatrix} 2 \\ 0 \\ -2 \end{pmatrix} + \alpha \begin{pmatrix} 1 \\ 0 \\ -1 \end{pmatrix} \text{ and}$ <p>conclude that the “direction vector” of \overrightarrow{VE} is parallel to $\begin{pmatrix} 1 \\ 0 \\ -1 \end{pmatrix}$].</p> <p>Alternatively, perform 2 dot products. Insufficient to do only 1 dot product, e.g. $\begin{pmatrix} 2 \\ -1 \\ 0 \end{pmatrix} \perp \begin{pmatrix} 1 \\ 2 \\ 1 \end{pmatrix}$ but $\begin{pmatrix} 2 \\ -1 \\ 0 \end{pmatrix}$ is not perpendicular to plane $OABC$.</p>

	$\overline{VE} = (\alpha + 2) \begin{pmatrix} 1 \\ 0 \\ -1 \end{pmatrix} = \left(\frac{\alpha + 2}{2} \right) \overline{VD}$ <p>Since E is between V & D, $0 < \frac{\alpha + 2}{2} < 1 \Rightarrow -2 < \alpha < 0$.</p> <p>Method 2:</p> <p>Equation of line VD: $\mathbf{r} = \begin{pmatrix} 0 \\ 1.5 \\ 0 \end{pmatrix} + \lambda \begin{pmatrix} 1 \\ 0 \\ -1 \end{pmatrix}$, $\lambda \in \mathbb{R}$</p> <p>We have \overline{OV} and \overline{OD} with $\lambda = -2$ and $\lambda = 0$ respectively.</p> $\overline{OE} = \begin{pmatrix} \alpha \\ 1.5 \\ -\alpha \end{pmatrix} = \begin{pmatrix} 0 \\ 1.5 \\ 0 \end{pmatrix} + \alpha \begin{pmatrix} 1 \\ 0 \\ -1 \end{pmatrix}$ <p>satisfies the equation of line VD with $\lambda = \alpha$. Since E is between V and D, $-2 < \alpha < 0$.</p>	<p>Or else show</p> $\overline{VE} \times \begin{pmatrix} 1 \\ 0 \\ -1 \end{pmatrix} = \begin{pmatrix} 0 \\ 0 \\ 0 \end{pmatrix}.$
<p>(iv) [4]</p>	<p>Normal of plane $OVA = \begin{pmatrix} 1 \\ 2 \\ 1 \end{pmatrix} \times \begin{pmatrix} -2 \\ 3/2 \\ 2 \end{pmatrix} = \begin{pmatrix} 2.5 \\ -4 \\ 5.5 \end{pmatrix} = \frac{1}{2} \begin{pmatrix} 5 \\ -8 \\ 11 \end{pmatrix}$</p> $\text{Distance of } E \text{ to plane } OVA = \frac{\left \overline{OE} \cdot \begin{pmatrix} 5 \\ -8 \\ 11 \end{pmatrix} \right }{\left \begin{pmatrix} 5 \\ -8 \\ 11 \end{pmatrix} \right } = \frac{\left \begin{pmatrix} \alpha \\ 1.5 \\ -\alpha \end{pmatrix} \cdot \begin{pmatrix} 5 \\ -8 \\ 11 \end{pmatrix} \right }{\sqrt{210}}$ $= \frac{ -6\alpha - 12 }{\sqrt{210}}$ $= \frac{6\alpha + 12}{\sqrt{210}} \text{ since } -2 < \alpha < 0$	<p>Be clear when to use dot product or cross product. Distance between a point and a plane can be found easily using $\frac{ \overline{VE} \cdot \overline{EF} }{ \overline{EF} }$.</p> <p>Other methods such as $\left[\begin{pmatrix} \alpha \\ 1.5 \\ -\alpha \end{pmatrix} + \mu \begin{pmatrix} 5 \\ -8 \\ 11 \end{pmatrix} \right] \cdot \begin{pmatrix} 5 \\ -8 \\ 11 \end{pmatrix} = 0$ or $\frac{ \overline{VE} \times \overline{VM} }{ \overline{VM} }$ where $\overline{OM} = \frac{1}{2} \overline{OA}$, work too.</p>
<p>(v) [2]</p>	<p>Distance between E and $OABC$</p> $= \overline{ED} = \left \alpha \begin{pmatrix} -1 \\ 0 \\ 1 \end{pmatrix} \right = -\alpha\sqrt{2} \text{ (since } \alpha < 0)$ <p>Given $\sqrt{105}(-\alpha\sqrt{2}) = 10 \left(\frac{6\alpha + 12}{\sqrt{210}} \right)$</p> $\Rightarrow -210\alpha = 60\alpha + 120 \Rightarrow \alpha = -\frac{4}{9}$	<p>Need to consider that $-2 < \alpha < 0$, so $\overline{DE} = \sqrt{2\alpha^2} = -\alpha\sqrt{2}$.</p>
<p>Marker Comments for Students Students should manage their time effectively to ensure sufficient time for a proper attempt for the question. Good to see many candidates drawing a diagram of the pyramid. Candidate should note the various methods for each part.</p>		



RAFFLES INSTITUTION 2018 YEAR 6 PRELIMINARY EXAMINATION

MATHEMATICS

9758/02

Paper 2

Total Marks: 100

3 hours

Additional materials: Answer Paper
List of Formulae (MF26)

READ THESE INSTRUCTIONS FIRST

Write your name and CT group on all the work you hand in.
Write in dark blue or black pen on both sides of the paper.
You may use an HB pencil for any diagrams or graphs.
Do not use staples, paper clips, glue or correction fluid.

Answer **all** the questions.

Give non-exact numerical answers correct to 3 significant figures, or 1 decimal place in the case of angles in degrees, unless a different level of accuracy is specified in the question.

You are expected to use an approved graphing calculator.

Unsupported answers from a graphing calculator are allowed unless a question specifically states otherwise.

Where unsupported answers from a graphing calculator are not allowed in a question, you are required to present the mathematical steps using mathematical notations and not calculator commands.

You are reminded of the need for clear presentation in your answers.

At the end of the examination, fasten all your work securely together.

The number of marks is given in brackets [] at the end of each question or part question.

This document consists of **9** printed pages.

RAFFLES INSTITUTION
Mathematics Department

Pure Mathematics (40 marks)

- 1** When a solid turns into a gas without first becoming a liquid, the process is called sublimation. As a spherical mothball sublimates, its volume, in cm^3 , decreases at a rate, in cm^3 per day, proportional to its surface area.

Show that the radius of the mothball decreases at a constant rate. [3]

[It is given that a sphere of radius r has surface area $4\pi r^2$ and volume $\frac{4}{3}\pi r^3$.]

- 2** The curve C has equation

$$y = \frac{(ax+1)(4x+b)}{2x+3}, \quad x \in \mathbb{R}, \quad x \neq -\frac{3}{2},$$

where a and b are constants. It is given that $y = 2x - 1$ is an asymptote of C .

- (i) Find the values of a and b . [3]
- (ii) Sketch C , labelling all relevant point(s) and stating the equations of any asymptotes. [4]

- 3** The position vectors of the points U and V with respect to the origin O are \mathbf{u} and \mathbf{v} respectively, where \mathbf{u} and \mathbf{v} are non-zero and non-parallel vectors.

- (i) Show that $(\mathbf{u} + \mathbf{v}) \times (\mathbf{v} - 2\mathbf{u})$ can be written as $k(\mathbf{u} \times \mathbf{v})$, where k is a constant to be determined, justifying your working. [2]

The vectors \mathbf{u} and \mathbf{v} are now given by

$$\mathbf{u} = \mathbf{i} - \mathbf{j} + 2\mathbf{k} \quad \text{and} \quad \mathbf{v} = a\mathbf{i} + b\mathbf{j},$$

where a and b are constants.

- (ii) If $a = 2$ and $b = 3$, find a unit vector parallel to $(\mathbf{u} + \mathbf{v}) \times (\mathbf{v} - 2\mathbf{u})$. [2]
- (iii) If \mathbf{v} is perpendicular to the vector $\mathbf{i} - 2\mathbf{j} + 3\mathbf{k}$, find \mathbf{v} in terms of \mathbf{i} , \mathbf{j} , \mathbf{k} and b . Interpret the solution geometrically. [3]

4 A curve C has parametric equations

$$x = \cot \theta, \quad y = 2 \cos^2 \theta,$$

where $0 < \theta \leq \frac{1}{2}\pi$.

- (i) The point P on C has parameter $\theta = \frac{1}{6}\pi$. Show that the gradient of the tangent at P is $\frac{\sqrt{3}}{4}$. Hence find the equation of the normal, L , at P . [3]
- (ii) Sketch C and L on the same diagram, stating the coordinates of the points where the line L cuts the curve C and the x -axis respectively. [2]
- (iii) Find the exact area of the region bounded by the curve C , the positive y -axis and the line $y = \frac{3}{2}$. [3]
- (iv) Show that the Cartesian equation of C is given by $y = \frac{2x^2}{a+x^b}$, where a and b are constants to be determined. [2]
- (v) The region bounded by the curve C , the line L , the positive x -axis and the line $x = \frac{1}{\sqrt{3}}$ is rotated through 2π radians about the x -axis. Find the volume of the solid formed. [3]

[Turn over

5 A sequence u_1, u_2, u_3, \dots is given by

$$u_r = \begin{cases} 0 & \text{for } r = 2, \\ f(r-1) - 2f(r-3) & \text{for } r \text{ even, } r \neq 2, \\ f(r) & \text{for } r \text{ odd.} \end{cases}$$

(i) Use the method of differences to find $\sum_{r=1}^{2n} u_r$. [3]

It is given that $f(r) = \ln\left(\frac{r+1}{r}\right)$.

(ii) Use your answer to part (i) to show that $\sum_{r=1}^{2n} u_r = -\ln 2 + 2\ln\left(1 + \frac{1}{2n-1}\right)$. Hence state the value of the sum to infinity. [2]

(iii) Find the smallest value of n for which $\sum_{r=1}^{2n} u_r$ is within 10^{-2} of the sum to infinity. [2]

(iv) By considering the graph of $y = \frac{1}{x}$ for $x > 0$, show, with the aid of a sketch, that $\frac{1}{2n} < u_{2n-1} < \frac{1}{2n-1}$, $n \in \mathbb{N}^+$. [3]

Statistics (60 marks)

6 For events A and B it is given that $P(A) = 0.5$ and $P(B') = 0.35$.

(a) Given that events A and B are not independent, find the range of values of $P(A \cup B)$. [2]

(b) Given that $P(A|B') = 0.6$, find

(i) $P(A \cup B)$, [3]

(ii) $P(A' \cup B')$. [1]

- 7 The speed of the surface of a tennis court, affected by a variety of factors, including the physical makeup of the court, can be measured using the Court Pace Index (CPI). The CPI of a court varies with every match played on it. A higher mean CPI for a court indicates a faster court surface.

For the rest of this question, assume that data is collected under similar conditions.

At a tennis club, the CPI of the main court is a continuous random variable X . Based on past readings, the standard deviation of X is k and the expected value of X is 33.8.

- (i) A random sample of 50 readings is to be taken. When $k = 1.5$, estimate the probability that the mean value of X , for this sample, will be at most 0.5 units from 34. [2]

In January 2018, the main court was resurfaced with a new physical makeup.

- (ii) The club management claims that the new physical makeup of the resurfaced main court increases its mean CPI. A random sample of 60 readings were taken from the resurfaced main court after January 2018 and the mean CPI of this sample is found to be 34.3.

A test is carried out, at the 5% level of significance, to determine whether the resurfaced main court has a faster court surface.

Find the set of possible values of k for which the result of the test should be accepted. You should state your hypotheses clearly. [3]

- (iii) The club management later obtained information that the value of k is 0.8 and that X follows a normal distribution. Another random sample of 30 readings were taken from the resurfaced main court after January 2018 and the mean CPI of this new sample is found to be \bar{x} .

A test is carried out, at the 5% level of significance, to determine whether the mean CPI of the resurfaced main court has changed.

Find the set of possible values of \bar{x} for which the result of the test should not be accepted. You should state your hypotheses clearly. [3]

[Turn over

- 8** In this question you should state clearly the values of the parameters of any normal distribution you use.

The masses in grams of apples have the distribution $N(80, 3^2)$ and the masses in grams of oranges have the distribution $N(100, 5^2)$.

- (i) Find the probability that the total mass of 2 randomly selected oranges is less than 205 grams. [2]
- (ii) Find the probability that the total mass of 4 randomly selected apples is more than three times the mass of 1 randomly selected orange. [3]

During the Community Health Week Event, visitors who take part in the activities are given gift boxes. Each gift box contains 3 apples and 2 oranges that are individually machine wrapped. The mass of wrapper used for each fruit is dependent on the mass of the fruit resulting in the mass of each wrapped fruit being 7% more than the mass of the fruit. The fruits are packed in a gift box and the mass of an empty gift box is normally distributed with mean 50 grams and standard deviation 2 grams. During packing, parts of the gift box is cut and removed. This process reduces the mass of each empty gift box by 10%.

- (iii) The probability that the total mass of a randomly selected gift box is less than k grams is 0.8. Find the value of k .

Find the probability that, at a particular collection point, the 25th gift box that is given is the 19th gift box whose total mass is less than k grams. [5]

- 9 The age of a species of trees can be determined by counting its rings, but that requires either cutting a tree down or extracting a sample from the tree's core. A forester attempts to find a relationship between a tree's age and its diameter instead. Based on past records, the forester found data for the diameter and the age (determined by the counting of its rings) of 8 trees of the same species that had been cut down. The results are given in the following table.

Diameter, D (inches)	1.8	6.6	9.9	10.8	12.8	13.2	15.4	16.5
Age, t (years)	5	8	16	12	22	28	30	40

- (i) Draw a scatter diagram for these values, labelling the axes clearly. [2]
- (ii) Find, correct to 4 decimal places, the product moment correlation coefficient between D and t . Comment on whether a linear model would be appropriate. [2]
- (iii) It was suggested that the tree's age can be modelled by one of the formulae

$$t = a + bD^2, \quad t = ae^{bD},$$

where a and b are constants.

Find, correct to 4 decimal places, the product moment correlation coefficient between

- (A) t and D^2 ,
 (B) $\ln t$ and D .

Explain which of $t = a + bD^2$ and $t = ae^{bD}$ best models the age of this species of trees based on the given data. [2]

- (iv) The forester wants to estimate the diameter of a tree given its age. Using a suitable regression line, find the required estimate of a tree that is 50 years old. Comment on the reliability of your estimate.

Explain why neither the regression line of t on D^2 nor the regression line of $\ln t$ on D should be used. [4]

[Turn over

10 Amy has four identical star shaped ornaments and six identical heart shaped ornaments.

- (a) Find the number of ways in which Amy can arrange the ten ornaments in a line. [1]

The star shaped ornaments are coloured Red, Green, Yellow and Purple, and the heart shaped ornaments are then coloured Red, Green, Yellow, Purple, Black and White.

- (b) Find the number of ways in which Amy can arrange the ten ornaments in a line such that exactly five heart shaped ornaments are next to each other. [3]

- (c) Amy then decides to arrange the ten ornaments in a circular manner. Find the number of ways in which all ornaments of the same colour are next to each other. [2]

- (d) Amy randomly distributes the ten ornaments into one group of four and two groups of three.

- (i) Show that the probability that the black and white ornaments are in the same group is $\frac{4}{15}$. [3]

- (ii) Find the probability that there are at least two heart shaped ornaments in the group of four given that the black and white ornaments are in the same group. [3]

- 11** The salad bar at a restaurant has n bowls each containing a different ingredient. Each customer to the restaurant is allowed only one visit to the salad bar. Jon visits the salad bar and makes a selection. At each bowl, he can take some or none of the contents, and he does not return to the bowl again. As the salad bar may not serve the same ingredients everyday, Jon does not know what ingredients will be served at each visit. On average, the probability that he takes some of the contents from each bowl is 0.4. For each visit to the salad bar, the number of different ingredients Jon takes is the random variable X .

- (i) State, in the context of this question, an assumption needed to model X by a binomial distribution, and explain why the assumption may not hold. [2]

Assume now that X has the distribution $B(n, 0.4)$.

- (ii) Jon visits the salad bar on a randomly chosen day. The probability that Jon takes exactly 7 different ingredients is denoted by P . Determine the value of n that gives the greatest value of P . [2]

Jon's selection on any day is independent of his selection on any other day. During a promotional week, the salad bar serves 6 different ingredients (A, B, C, D, E, F) on Monday and Tuesday, 6 different ingredients (G, H, I, J, K, L) on Wednesday and Thursday, and all 12 different ingredients (A to L) on Friday, Saturday and Sunday.

- (iii) If Jon visits the salad bar on Monday and Thursday of the promotional week, find the probability that he takes at least 3 different ingredients on each day. [2]
- (iv) If Jon visits the salad bar on Saturday of the promotional week, find the probability that he takes at least 6 different ingredients. [1]
- (v) Explain in context why the answer to part (iv) is greater than the answer to part (iii). [1]

After the promotional week, the restaurant decides to charge customers \$3 for a visit to the salad bar, and an additional \$2 if they take more than $\frac{n}{2}$ different ingredients. Kai visits the salad bar after the promotional week and makes a selection. The number of different ingredients Kai takes is the random variable K . It is given that

$$P(K \leq k) = \left(\frac{k}{n}\right)^2, \quad k = 0, 1, 2, \dots, n.$$

- (vi) If Kai visits the salad bar on a particular day after the promotional week when $n=9$, find the expected amount Kai pays for that particular visit. [3]

Kai visits the salad bar on a randomly chosen day after the promotional week.

- (vii) Show that $P(K = k) = \frac{2k-1}{n^2}$, $k = 1, 2, \dots, n$. [1]

- (viii) Find, in terms of n , the expected number of different ingredients Kai takes on that day. [You may use the result $\sum_{r=1}^n r^2 = \frac{n}{6}(n+1)(2n+1)$.] [2]

2018 RI Prelim Exam Paper 2

Pure Mathematics (40 marks)

- 1 When a solid turns into a gas without first becoming a liquid, the process is called sublimation. As a spherical mothball sublimates, its volume, in cm^3 , decreases at a rate, in cm^3 per day, proportional to its surface area.

Show that the radius of the mothball decreases at a constant rate. [3]

[It is given that a sphere of radius r has surface area $4\pi r^2$ and volume $\frac{4}{3}\pi r^3$.]

<p>1 [3]</p>	<p>Let V and A be the volume and surface area of the spherical mothball respectively.</p> $\frac{dV}{dt} = kA, k < 0 \quad \dots\dots\dots (1)$ $V = \frac{4}{3}\pi r^3$ $\frac{dV}{dt} = 4\pi r^2 \frac{dr}{dt} = A \frac{dr}{dt} \quad \dots\dots\dots (2)$ $(1) = (2) \Rightarrow \frac{dr}{dt} = k < 0$ <p>\therefore The radius decreases at a constant rate (shown).</p>	<p>Indicate $k < 0$.</p>
--------------------------------	---	--

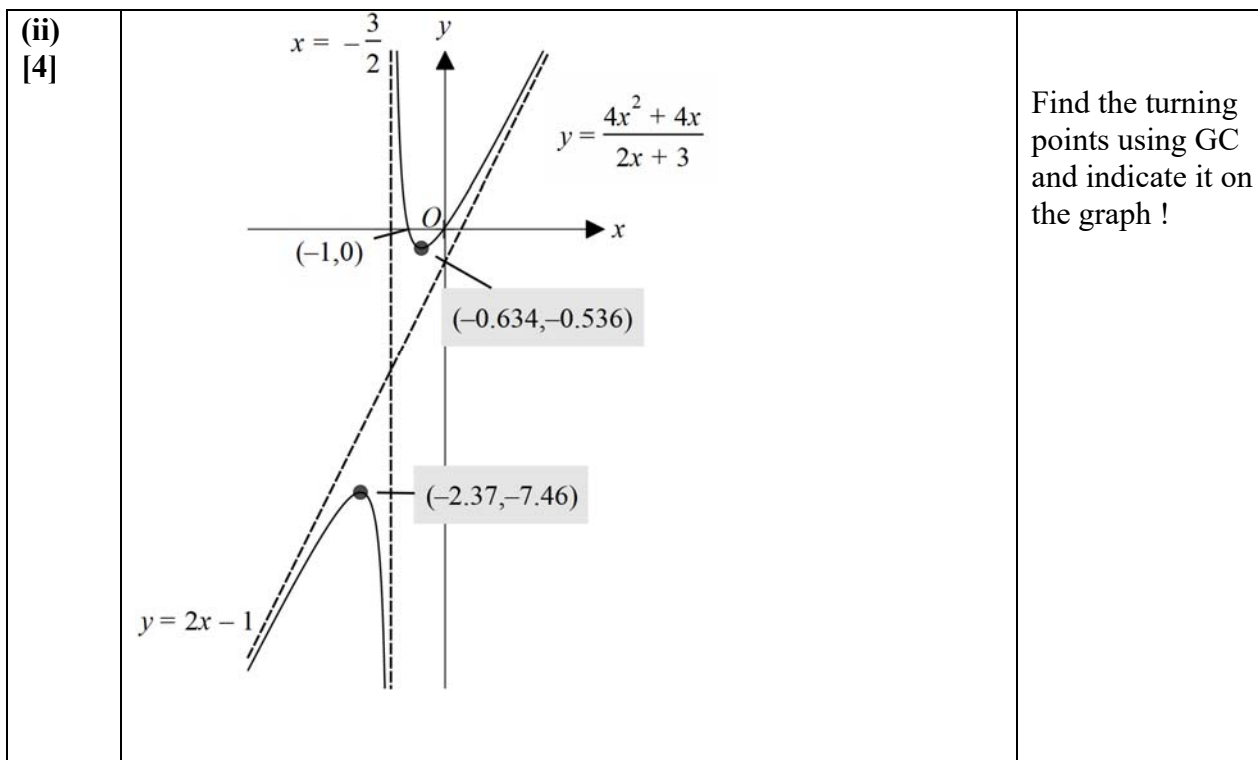
- 2 The curve C has equation

$$y = \frac{(ax+1)(4x+b)}{2x+3}, \quad x \in \mathbb{R}, x \neq -\frac{3}{2},$$

where a and b are constants. It is given that $y = 2x - 1$ is an asymptote of C .

- (i) Find the values of a and b . [3]
- (ii) Sketch C , labelling all relevant point(s) and stating the equations of any asymptotes. [4]

<p>2(i) [3]</p>	$y = \frac{(ax+1)(4x+b)}{2x+3} = (2x-1) + \frac{c}{2x+3}$ $\therefore \frac{(ax+1)(4x+b)}{2x+3} = \frac{(2x-1)(2x+3)+c}{2x+3}$ $(ax+1)(4x+b) = (2x-1)(2x+3)+c$ <p>By comparing coefficients of</p> $x^2 : a = 1,$ $x : ab + 4 = 6 - 2 \Rightarrow ab = 0 \Rightarrow b = 0$	<p>Long division is a longer method.</p>
-----------------------------------	--	--



3 The position vectors of the points U and V with respect to the origin O are \mathbf{u} and \mathbf{v} respectively, where \mathbf{u} and \mathbf{v} are non-zero and non-parallel vectors.

(i) Show that $(\mathbf{u} + \mathbf{v}) \times (\mathbf{v} - 2\mathbf{u})$ can be written as $k(\mathbf{u} \times \mathbf{v})$, where k is a constant to be determined, justifying your working. [2]

The vectors \mathbf{u} and \mathbf{v} are now given by

$$\mathbf{u} = \mathbf{i} - \mathbf{j} + 2\mathbf{k} \quad \text{and} \quad \mathbf{v} = a\mathbf{i} + b\mathbf{j},$$

where a and b are constants.

(ii) If $a = 2$ and $b = 3$, find a unit vector parallel to $(\mathbf{u} + \mathbf{v}) \times (\mathbf{v} - 2\mathbf{u})$. [2]

(iii) If \mathbf{v} is perpendicular to the vector $\mathbf{i} - 2\mathbf{j} + 3\mathbf{k}$, find \mathbf{v} in terms of \mathbf{i} , \mathbf{j} , \mathbf{k} and b . Interpret the solution geometrically. [3]

<p>3(i) [2]</p>	$ \begin{aligned} (\mathbf{u} + \mathbf{v}) \times (\mathbf{v} - 2\mathbf{u}) &= (\mathbf{u} \times \mathbf{v}) - 2(\mathbf{u} \times \mathbf{u}) + (\mathbf{v} \times \mathbf{v}) - 2(\mathbf{v} \times \mathbf{u}) \\ &= (\mathbf{u} \times \mathbf{v}) + 2(\mathbf{u} \times \mathbf{v}) \\ &\quad (\because \mathbf{u} \times \mathbf{u} = \mathbf{0}, \mathbf{v} \times \mathbf{v} = \mathbf{0}, \mathbf{v} \times \mathbf{u} = -(\mathbf{u} \times \mathbf{v})) \\ &= 3(\mathbf{u} \times \mathbf{v}) \quad \therefore k = 3 \end{aligned} $	<p>This is a “show” question so explicit working/ reasoning should be shown. Important: $\mathbf{v} \times \mathbf{u} = -(\mathbf{u} \times \mathbf{v})$</p>
<p>(ii) [2]</p>	$\mathbf{u} \times \mathbf{v} = \begin{pmatrix} 1 \\ -1 \\ 2 \end{pmatrix} \times \begin{pmatrix} 2 \\ 3 \\ 0 \end{pmatrix} = \begin{pmatrix} -6 \\ 4 \\ 5 \end{pmatrix}$ <p>A unit vector parallel to $(\mathbf{u} + \mathbf{v}) \times (\mathbf{v} - 2\mathbf{u})$ is $= \pm \frac{1}{\sqrt{77}} \begin{pmatrix} -6 \\ 4 \\ 5 \end{pmatrix}$.</p>	<p>Students must represent vectors appropriately. The “tilde” ~ underneath the letter should not be forgotten.</p>

<p>(iii) [3]</p>	<p>Since \mathbf{v} is perpendicular to the vector $\mathbf{i} - 2\mathbf{j} + 3\mathbf{k}$,</p> $\begin{pmatrix} a \\ b \\ 0 \end{pmatrix} \cdot \begin{pmatrix} 1 \\ -2 \\ 3 \end{pmatrix} = 0$ $a - 2b = 0$ $a = 2b$ $\mathbf{v} = \begin{pmatrix} 2b \\ b \\ 0 \end{pmatrix} = b \begin{pmatrix} 2 \\ 1 \\ 0 \end{pmatrix}$ <p>The solution represents the position vector of any point on the line which passes through the origin and is parallel to the vector $2\mathbf{i} + \mathbf{j}$.</p>	<p>Explain/describe properly what \mathbf{v} represents.</p>
------------------------------------	--	---

4 A curve C has parametric equations

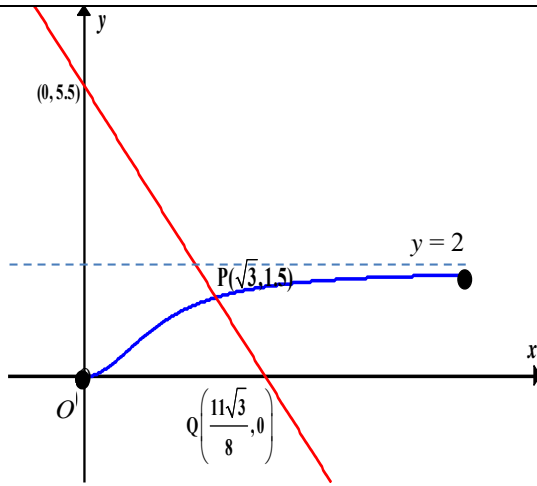
$$x = \cot \theta, \quad y = 2 \cos^2 \theta,$$

where $0 < \theta \leq \frac{1}{2}\pi$.

- (i)** The point P on C has parameter $\theta = \frac{1}{6}\pi$. Show that the gradient of the tangent at P is $\frac{\sqrt{3}}{4}$. Hence find the equation of the normal, L , at P . [3]
- (ii)** Sketch C and L on the same diagram, stating the coordinates of the points where the line L cuts the curve C and the x -axis respectively. [2]
- (iii)** Find the exact area of the region bounded by the curve C , the positive y -axis and the line $y = \frac{3}{2}$. [3]
- (iv)** Show that the Cartesian equation of C is given by $y = \frac{2x^2}{a+x^b}$, where a and b are constants to be determined.
- (v)** The region bounded by the curve C , the line L , the positive x -axis and the line $x = \frac{1}{\sqrt{3}}$ is rotated through 2π radians about the x -axis. Find the volume of the solid formed. [3]

<p>4(i) [3]</p>	<p>$x = \cot \theta \Rightarrow \frac{dx}{d\theta} = -\operatorname{cosec}^2 \theta$</p> <p>$y = 2 \cos^2 \theta \Rightarrow \frac{dy}{d\theta} = -4 \sin \theta \cos \theta$</p> <p>$\frac{dy}{dx} = \frac{-4 \sin \theta \cos \theta}{-\operatorname{cosec}^2 \theta} = 4 \sin^3 \theta \cos \theta$</p> <p>When $\theta = \frac{\pi}{6}$, $\frac{dy}{dx} = 4 \left(\frac{1}{2}\right)^3 \left(\frac{\sqrt{3}}{2}\right) = \frac{\sqrt{3}}{4}$ (shown)</p> <p>At P, $x = \sqrt{3}$, $y = \frac{3}{2}$. Equation of L, the normal at P, is</p> $y - \frac{3}{2} = -\frac{4}{\sqrt{3}}(x - \sqrt{3}) \quad \text{or} \quad y = -\frac{4}{\sqrt{3}}x + \frac{11}{2}$	<p>In a show question, sufficient working must be demonstrated.</p>
-----------------------------------	---	---

(ii)
[2]



Label the graph clearly indicating the closed circle at the end points.

(iii)
[3]

$$\begin{aligned} \text{Area} &= \int_0^{\frac{3}{2}} x \, dy & y=0 &\Rightarrow \cos \theta = 0 \Rightarrow \theta = \frac{\pi}{2} \\ &= \int_{\frac{\pi}{2}}^{\frac{\pi}{6}} \cot \theta \frac{dy}{d\theta} d\theta & y=\frac{3}{2} &\Rightarrow \cos \theta = \frac{\sqrt{3}}{2} (\because 0 < \theta \leq \frac{\pi}{2}) \Rightarrow \theta = \frac{\pi}{6} \\ &= \int_{\frac{\pi}{2}}^{\frac{\pi}{6}} \frac{\cos \theta}{\sin \theta} (4 \cos \theta (-\sin \theta)) d\theta \\ &= -4 \int_{\frac{\pi}{2}}^{\frac{\pi}{6}} \cos^2 \theta d\theta \\ &= 4 \int_{\frac{\pi}{6}}^{\frac{\pi}{2}} \frac{1 + \cos 2\theta}{2} d\theta \\ &= 2 \left[\theta + \frac{\sin 2\theta}{2} \right]_{\frac{\pi}{6}}^{\frac{\pi}{2}} \\ &= \frac{2\pi}{3} - \frac{\sqrt{3}}{2} \end{aligned}$$

Alternatively, use Cartesian form of the equation (found in (iv))

$$\begin{aligned} \text{Area} &= (\sqrt{3})(1.5) - \int_0^{\sqrt{3}} \frac{2x^2}{1+x^2} dx \\ &= \frac{3\sqrt{3}}{2} - \int_0^{\sqrt{3}} \frac{2(1+x^2-1)}{1+x^2} dx \\ &= \frac{3\sqrt{3}}{2} - \int_0^{\sqrt{3}} 2 - \frac{2}{1+x^2} dx \\ &= \frac{3\sqrt{3}}{2} - [2x - 2 \tan^{-1} x]_0^{\sqrt{3}} \\ &= \frac{3\sqrt{3}}{2} - \left[2\sqrt{3} - \frac{2\pi}{3} \right] \\ &= \frac{2\pi}{3} - \frac{\sqrt{3}}{2} \end{aligned}$$

<p>(iv) [2]</p>	$x = \cot \theta \Rightarrow x^2 = \cot^2 \theta$ $y = 2 \cos^2 \theta \Rightarrow y = 2 - 2 \sin^2 \theta \Rightarrow \operatorname{cosec}^2 \theta = \frac{2}{2-y}$ $\operatorname{cosec}^2 \theta = 1 + \cot^2 \theta$ $\frac{2}{2-y} = 1 + x^2$ $2 = 2 + 2x^2 - y - x^2 y$ $y = \frac{2x^2}{1+x^2}, \quad x > 0 \quad (\because 0 < \theta \leq \frac{\pi}{2} \Rightarrow x > 0)$	
<p>(v) [2]</p>	<p>Volume of solid = $\int_{\frac{1}{\sqrt{3}}}^{\sqrt{3}} \pi y^2 \, dx + \frac{1}{3} \pi \left(\frac{3}{2}\right)^2 \left(\frac{3\sqrt{3}}{8}\right)$</p> $= \int_{\frac{1}{\sqrt{3}}}^{\sqrt{3}} \pi \left(\frac{2x^2}{1+x^2}\right)^2 \, dx + \frac{1}{3} \pi \left(\frac{3}{2}\right)^2 \left(\frac{3\sqrt{3}}{8}\right)$ $= 6.17 \text{ units}^3$ <p>Alternatively</p> <p>Volume of solid = $\int_{\frac{1}{\sqrt{3}}}^{\sqrt{3}} \pi y^2 \, dx + \frac{1}{3} \pi \left(\frac{3}{2}\right)^2 \left(\frac{3\sqrt{3}}{8}\right)$</p> $= \int_{\frac{\pi}{3}}^{\frac{\pi}{6}} \pi (2 \cos^2 \theta)^2 (-\operatorname{cosec}^2 \theta \, d\theta) + \frac{1}{3} \pi \left(\frac{3}{2}\right)^2 \left(\frac{3\sqrt{3}}{8}\right)$ $= 6.17 \text{ units}^3$	<p>Read the question slowly/ clearly to identify the correct “region” to find the volume.</p> <p>Little or NO credit can be given if an incorrect region is used.</p> <p>Note alternative solution.</p>

5 A sequence u_1, u_2, u_3, \dots is given by

$$u_r = \begin{cases} 0 & \text{for } r = 2, \\ f(r-1) - 2f(r-3) & \text{for } r \text{ even, } r \neq 2, \\ f(r) & \text{for } r \text{ odd.} \end{cases}$$

(i) Use the method of differences to find $\sum_{r=1}^{2n} u_r$. [3]

It is given that $f(r) = \ln\left(\frac{r+1}{r}\right)$.

(ii) Use your answer to part (i) to show that $\sum_{r=1}^{2n} u_r = -\ln 2 + 2 \ln\left(1 + \frac{1}{2n-1}\right)$. Hence state the value of the sum to infinity. [2]

(iii) Find the smallest value of n for which $\sum_{r=1}^{2n} u_r$ is within 10^{-2} of the sum to infinity. [2]

(iv) By considering the graph of $y = \frac{1}{x}$ for $x > 0$, show, with the aid of a sketch,

that
$$\frac{1}{2n} < u_{2n-1} < \frac{1}{2n-1}, \quad n \in \mathbb{Z}^+. \quad [3]$$

<p>(i) [3]</p>	$\sum_{r=1}^{2n} u_r = f(1)$ $+0$ $+f(3)$ $+f(3) - 2f(1)$ $+f(5)$ $+f(5) - 2f(3)$ $+f(7)$ $+f(7) - 2f(5)$ $+\dots$ $+f(2n-3)$ $+f(2n-3) - 2f(2n-5)$ $+f(2n-1)$ $+f(2n-1) - 2f(2n-3)$ $= -f(1) + 2f(2n-1)$	<p>Consider odd and even values.</p> <p>Candidates who are unable to make progress should review piecewise functions.</p>						
<p>(ii) [2]</p>	$\sum_{r=1}^{2n} u_r = -f(1) + 2f(2n-1)$ $= -\ln\left(\frac{2}{1}\right) + 2\ln\left(\frac{(2n-1)+1}{2n-1}\right)$ $= -\ln 2 + 2\ln\left(1 + \frac{1}{2n-1}\right) \text{ (shown)}$ <p>As $n \rightarrow \infty$, $\frac{1}{2n-1} \rightarrow 0$, $1 + \frac{1}{2n-1} \rightarrow 1$, $\ln\left(1 + \frac{1}{2n-1}\right) \rightarrow 0$, $\sum_{r=1}^{2n} u_r \rightarrow -\ln 2$.</p> <p>Sum to infinity is $-\ln 2$.</p>	<p>While an explanation was not demanded, candidates should note correct reasoning here.</p>						
<p>(iii) [2]</p>	$\left \sum_{r=1}^{2n} u_r - (-\ln 2) \right < 10^{-2}$ $2\ln\left(1 + \frac{1}{2n-1}\right) < 0.01 \quad (\because 1 + \frac{1}{2n-1} > 1 \Rightarrow \ln\left(1 + \frac{1}{2n-1}\right) > 0)$ <p>From GC, $n > 100.25$</p> <p>Or alternatively</p> <table border="1" data-bbox="268 1646 651 1780"> <tbody> <tr> <td>n</td> <td>$2\ln\left(1 + \frac{1}{2n-1}\right)$</td> </tr> <tr> <td>100</td> <td>$0.010025 > 0.01$</td> </tr> <tr> <td>101</td> <td>$0.0099256 < 0.01$</td> </tr> </tbody> </table> <p>\therefore Smallest value of $n = 101$</p>	n	$2\ln\left(1 + \frac{1}{2n-1}\right)$	100	$0.010025 > 0.01$	101	$0.0099256 < 0.01$	<p>Candidates should note an absolute difference is required.</p>
n	$2\ln\left(1 + \frac{1}{2n-1}\right)$							
100	$0.010025 > 0.01$							
101	$0.0099256 < 0.01$							
<p>(iv) [3]</p>	<p>From the graph of $y = \frac{1}{x}$ for $x > 0$,</p>							

		<p>Compare the integral with rectangle above and below</p> <p>Candidates to note the connection between $y = \frac{1}{x}$ and $y = \ln x$</p>
	<p>Area of rectangle CDFE $< \int_{2n-1}^{2n} \frac{1}{x} dx < \text{Area of rectangle ABFE}$</p> $(1) \left(\frac{1}{2n} \right) < [\ln x]_{2n-1}^{2n} < (1) \left(\frac{1}{2n-1} \right)$ $\frac{1}{2n} < \ln \frac{2n}{2n-1} < \frac{1}{2n-1}$ <p>$\ln \frac{2n}{2n-1} = \ln \frac{(2n-1)+1}{2n-1} = u_{2n-1}$ since $2n-1$ is odd,</p> <p>$\therefore \frac{1}{2n} < u_{2n-1} < \frac{1}{2n-1}$ (shown).</p>	

Statistics (60 marks)

- 6 For events A and B it is given that $P(A) = 0.5$ and $P(B) = 0.35$.
- (a) Given that events **A and B are not independent**, find the range of values of $P(A \cup B)$. [2]
- (b) Given that $P(A | B') = 0.6$, find
- (i) $P(A \cup B)$, [3]
- (ii) $P(A' \cup B')$. [1]

<p>(a) [2]</p>	<p>$P(A \cup B) = P(A) + P(B) - P(A \cap B)$ $= 0.5 + 0.65 - P(A \cap B)$ $= 1.15 - P(A \cap B)$</p> <p>Since $0 \leq P(A \cup B) \leq 1$, $0.15 \leq P(A \cap B) \leq \min\{P(A), P(B)\} \Rightarrow 0.15 \leq P(A \cap B) \leq 0.5$</p> <p>If A and B are independent, $P(A \cap B) = (0.5)(0.65) = 0.325 \Rightarrow P(A \cup B) = 0.825$</p> <p>$\therefore 0.65 \leq P(A \cup B) \leq 1$ and $P(A \cup B) \neq 0.825$.</p> <p>Range of $P(A \cup B)$ is $[0.65, 1] \setminus \{0.825\}$.</p>	<p>Students to note that $P(A \cap B) = P(A)P(B)$ is true ONLY when A and B are independent.</p> <p>A and B are NOT independent so $P(A \cup B)$ cannot take value 0.825</p>
<p>(b)(i) [3]</p>	<p>$P(A' B') = 1 - P(A B')$ $= 1 - 0.6$ $= 0.4$</p>	<p>Candidates should use the Venn diagrams to analyze the relation of A</p>

	$P(A' \cap B') = P(B') P(A' B')$ $= (0.35)(0.4)$ $= 0.14$ $P(A \cup B) = 1 - P(A' \cap B')$ $= 1 - 0.14$ $= 0.86$ <p>Alternatively,</p> $P(A \cap B') = P(B') P(A B')$ $= (0.35)(0.6)$ $= 0.21$ $P(A \cup B) = P(B) + P(A \cap B')$ $= (1 - 0.35) + 0.21$ $= 0.86$	<p>and B.</p> <p>Candidates should understand the difference between $P(A \cap B)$ and $P(A \cup B)$.</p>
(b)(ii) [1]	$P(A' \cup B') = P(A') + P(B') - P(A' \cap B')$ $= 0.5 + 0.35 - 0.14$ $= 0.71$ <p>Alternatively,</p> $P(A' \cup B') = 1 - P(A \cap B) = 1 - [P(A) - P(A \cap B')]$ $= 1 - [0.5 - 0.21]$ $= 0.71$	<p>Do not confuse De Morgan's Laws,</p> $P(A' \cup B') \neq P(A \cap B)$ $P(A' \cup B') \neq 1 - P(A \cup B).$

- 7 The speed of the surface of a tennis court, affected by a variety of factors, including the physical makeup of the court, can be measured using the Court Pace Index (CPI). The CPI of a court varies with every match played on it. A higher mean CPI for a court indicates a faster court surface.

For the rest of this question, assume that data is collected under similar conditions.

At a tennis club, the CPI of the main court is a continuous random variable X . Based on past readings, the standard deviation of X is k and the expected value of X is 33.8.

- (i) A random sample of 50 readings is to be taken. When $k = 1.5$, estimate the probability that the mean value of X , for this sample, will be at most 0.5 units from 34. [2]

In January 2018, the main court was resurfaced with a new physical makeup.

- (ii) The club management claims that the new physical makeup of the resurfaced main court increases its mean CPI. A random sample of 60 readings were taken from the resurfaced main court after January 2018 and the mean CPI of this sample is found to be 34.3.

A test is carried out, at the 5% level of significance, to determine whether the resurfaced main court has a faster court surface.

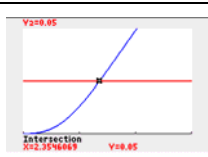
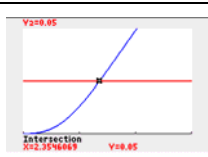
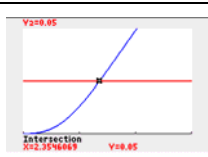
Find the set of possible values of k for which the result of the test should be accepted. You should state your hypotheses clearly. [3]

- (iii) The club management later obtained information that the value of k is 0.8 and that X follows a normal distribution. Another random sample of 30 readings

were taken from the resurfaced main court after January 2018 and the mean CPI of this new sample is found to be \bar{x} .

A test is carried out, at the 5% level of significance, to determine whether the mean CPI of the resurfaced main court has changed.

Find the set of possible values of \bar{x} for which the result of the test should not be accepted. You should state your hypotheses clearly. [3]

<p>(i) [2]</p>	<p>By Central Limit Theorem, since $n = 50$ is large, $\bar{X} \sim N\left(33.8, \frac{1.5^2}{50}\right)$ approximately.</p> <p>$P(\bar{X} - 34 < 0.5) = P(33.5 < \bar{X} < 34.5) = 0.921$ (3 s.f.)</p> <p>Remarks:</p> <ul style="list-style-type: none"> It is incorrect to claim that X is normally distributed by Central Limit Theorem. Central Limit theorem is used to find the approximate distribution of \bar{X} (i.e. a random sample mean) when the distribution of X is either unknown or not normal. It is not for finding the distribution of X. It holds only when the sample size is large. 		
<p>(ii) [3]</p>	<p>$H_0 : \mu = 33.8$ $H_1 : \mu > 33.8$</p> <p>Under H_0, since $n = 60$ is large, $\bar{X} \sim N\left(\mu_0, \frac{k^2}{n}\right)$ approximately by Central Limit Theorem, with $\mu_0 = 33.8$, $n = 60$.</p> <p>At 5% level of significance, to accept test, we reject H_0,</p> <p style="text-align: center;">$p\text{-value} \leq 0.05$</p> <p style="text-align: center;">$P(\bar{X} \geq 34.3) \leq 0.05$</p> <table border="1" style="width: 100%; border-collapse: collapse;"> <tr> <td style="padding: 5px;"> $P\left(Z \geq \frac{34.3 - 33.8}{k / \sqrt{60}}\right) \leq 0.05$ $\frac{34.3 - 33.8}{k / \sqrt{60}} \geq 1.6448536$ $k \leq 2.3545 = 2.35 \text{ (3 s.f.)}$ </td> <td style="padding: 5px; text-align: center;">  <p>From GC, $k \leq 2.35$ (3 s.f.)</p> </td> </tr> </table> <p>Hence, the set of values of k is $\{k \in \mathbb{R} : 0 < k \leq 2.35\}$.</p> <p>Remarks:</p> <ul style="list-style-type: none"> In this hypothesis testing, we are testing on the unknown population mean μ. Thus the null and alternative hypothesis should only involve μ and the value that we are ‘suggesting’ that it takes. i.e. $H_0 : \mu = 33.8$ $H_1 : \mu > 33.8$ To do the test, we need to use the distribution of \bar{X} as we are using a sample result (namely the mean of a particular sample = \bar{x}) to determine if we are able to reject or not reject the hypothesis at a particular level of significance. As such, the distribution of \bar{X} should only come after the hypothesis is stated. $\bar{X} \sim N\left(\mu_0, \frac{\sigma^2}{n}\right)$ approximately via Central Limit Theorem or is exactly normal (if X is normal). Also, $E(\bar{X}) = E(X)$ and hence μ_0 should take the value of the population 	$P\left(Z \geq \frac{34.3 - 33.8}{k / \sqrt{60}}\right) \leq 0.05$ $\frac{34.3 - 33.8}{k / \sqrt{60}} \geq 1.6448536$ $k \leq 2.3545 = 2.35 \text{ (3 s.f.)}$	 <p>From GC, $k \leq 2.35$ (3 s.f.)</p>
$P\left(Z \geq \frac{34.3 - 33.8}{k / \sqrt{60}}\right) \leq 0.05$ $\frac{34.3 - 33.8}{k / \sqrt{60}} \geq 1.6448536$ $k \leq 2.3545 = 2.35 \text{ (3 s.f.)}$	 <p>From GC, $k \leq 2.35$ (3 s.f.)</p>		

	<p>mean μ.</p> <p>However, since the value of μ is unknown, in hypothesis testing, we work under the assumption that μ takes on the value as stated in the null hypothesis and tries to find evidence against it. It is thus important to write the words ‘Under H_0’ and hence your working should read $H_0 : \mu = 33.8$ $H_1 : \mu > 33.8$</p> <p>Under H_0, $\bar{X} \sim N\left(\mu_0, \frac{\sigma^2}{n}\right)$ where $\mu_0 = 33.8$, ...</p> <ul style="list-style-type: none"> • Common error - wrong expression for p-value and confusion in algebraic manipulation: p-value refers to the chance of obtaining ‘this kind’ of sample result (see the notes for proper definition). The sample mean \bar{x} based on an obtained sample was 34.3. Thus $p\text{-value} = P(\bar{X} \geq 34.3)$ (i.e. the chance of sample mean being 34.3 or higher). Thus for (ii), it should read To reject H_0, $p\text{-value} \leq 0.05$ $P(\bar{X} \geq 34.3) \leq 0.05$ $P\left(Z \geq \frac{34.3 - 33.8}{k / \sqrt{60}}\right) \leq 0.05$ (standardisation using $\bar{X} \sim N\left(33.8, \frac{k^2}{60}\right)$) $\frac{34.3 - 33.8}{k / \sqrt{60}} \geq 1.6448536$ (note the changes in inequality sign) $k \leq 2.35$ (3 s.f.)
<p>(iii) [3]</p>	<p>$H_0 : \mu = 33.8$ $H_1 : \mu \neq 33.8$</p> <p>Perform a 2-tail test at 5% level of significance.</p> <p>Under H_0, $\bar{X} \sim N\left(\mu_0, \frac{\sigma^2}{n}\right)$ with $\mu_0 = 33.8$, $\sigma = 0.8$, $n = 30$.</p> <p>At 5% level of significance, for the test to be not accepted, do not reject H_0. From GC $p\text{-value} > 0.05$ $\Rightarrow P(\bar{X} \geq \bar{x}) > 0.025$ and $P(\bar{X} \leq \bar{x}) > 0.025$ $\Rightarrow \bar{x} < 34.086 = 34.1$ (3.s.f.) and $\bar{x} > 33.514 = 33.5$ (3.s.f.)</p> <p>The set of values of \bar{x} is $\{\bar{x} \in \mathbb{R} : 33.5 < \bar{x} < 34.1\}$.</p> <p>Alternatively, we can use symmetry about $\mu = 33.8$ to get the other value.</p> <p>Remarks:</p> <ul style="list-style-type: none"> • $\bar{X} \sim N\left(\mu_0, \frac{\sigma^2}{n}\right)$ exactly and not approximately • Incorrect expressions regarding p-value for 2 tail test eg. p-value is NOT $P(\bar{X} \neq \bar{x})$ or $P(\bar{X} < \bar{x}) + P(\bar{X} > \bar{x})$ • Inconsistent algebraic manipulation when working from expressions involving probability to expressions involving z-value.

8 In this question you should state clearly the values of the parameters of any normal distribution you use.

The masses in grams of apples have the distribution $N(80, 3^2)$ and the masses in grams of oranges have the distribution $N(100, 5^2)$.

- (i) Find the probability that the total mass of 2 randomly selected oranges is less than 205 grams. [2]
- (ii) Find the probability that the total mass of 4 randomly selected apples is more than three times the mass of 1 randomly selected orange. [3]

During the Community Health Week Event, visitors who take part in the activities are given gift boxes. Each gift box contains 3 apples and 2 oranges that are individually machine wrapped. The mass of wrapper used for each fruit is dependent on the mass of the fruit resulting in the mass of each wrapped fruit being 7% more than the mass of the fruit. The fruits are packed in a gift box and the mass of an empty gift box is normally distributed with mean 50 grams and standard deviation 2 grams. During packing, parts of the gift box is cut and removed. This process reduces the mass of each empty gift box by 10%.

- (iii) The probability that the total mass of a randomly selected gift box is less than k grams is 0.8. Find the value of k .

Find the probability that, at a particular collection point, the 25th gift box that is given is the 19th gift box whose total mass is less than k grams. [5]

<p>(i) [2]</p>	<p>Let X be the mass of an orange in grams. $X \sim N(100, 5^2)$ $X_1 + X_2 \sim N(2 \times 100, 2 \times 5^2)$ $X_1 + X_2 \sim N(200, 50)$ $P(X_1 + X_2 < 205) = 0.760$ (3 s.f.)</p>	
<p>(ii) [3]</p>	<p>Let Y be the mass of an apple in grams. $Y \sim N(80, 3^2)$ and $X \sim N(100, 5^2)$ $Y_1 + Y_2 + Y_3 + Y_4 - 3X \sim N(4 \times 80 - 3 \times 100, 4 \times 3^2 + 3^2 \times 5^2)$ $Y_1 + Y_2 + Y_3 + Y_4 - 3X \sim N(20, 261)$ $P(Y_1 + Y_2 + Y_3 + Y_4 > 3X) = P(Y_1 + Y_2 + Y_3 + Y_4 - 3X > 0)$ $= 0.892$</p>	
<p>(iii) [5]</p>	<p>Let B be the mass of an empty gift box. $B \sim N(50, 2^2)$ Let M be the total mass of a gift box. $M = 1.07(Y_1 + Y_2 + Y_3 + X_1 + X_2) + 0.9B$ $M \sim N(3 \times 1.07 \times 80 + 2 \times 1.07 \times 100 + 0.9 \times 50,$ $3 \times 1.07^2 \times 3^2 + 2 \times 1.07^2 \times 5^2 + 0.9^2 \times 2^2)$ $M \sim N(515.8, 91.3973)$ $P(M < k) = 0.8$ Using GC, $\therefore k = 523.8$(1d.p.) = 524 (3 s.f.) Required probability = P(of the first 24 gift boxes given, 18 has total mass less than k g) ×</p>	<p>Calculate the variance carefully Common mistake: Forgetting to square the constants "1.07" and "0.9".</p>

	$P(25^{\text{th}} \text{ gift box has total mass less than } k \text{ g})$ $= \left[\binom{24}{18} (0.8)^{18} (0.2)^6 \right] (0.8) = 0.124 (3 \text{ s.f.})$	
--	---	--

- 9 The age of a species of trees can be determined by counting its rings, but that requires either cutting a tree down or extracting a sample from the tree's core. A forester attempts to find a relationship between a tree's age and its diameter instead. Based on past records, the forester found data for the diameter and the age (determined by the counting of its rings) of 8 trees of the same species that had been cut down. The results are given in the following table.

Diameter, D (inches)	1.8	6.6	9.9	10.8	12.8	13.2	15.4	16.5
Age, t (years)	5	8	16	12	22	28	30	40

- (i) Draw a scatter diagram for these values, labelling the axes clearly. [2]
- (ii) Find, correct to 4 decimal places, the product moment correlation coefficient between D and t . Comment on whether a linear model would be appropriate. [2]
- (iii) It was suggested that the tree's age can be modelled by one of the formulae

$$t = a + bD^2, \quad t = ae^{bD},$$

where a and b are constants.

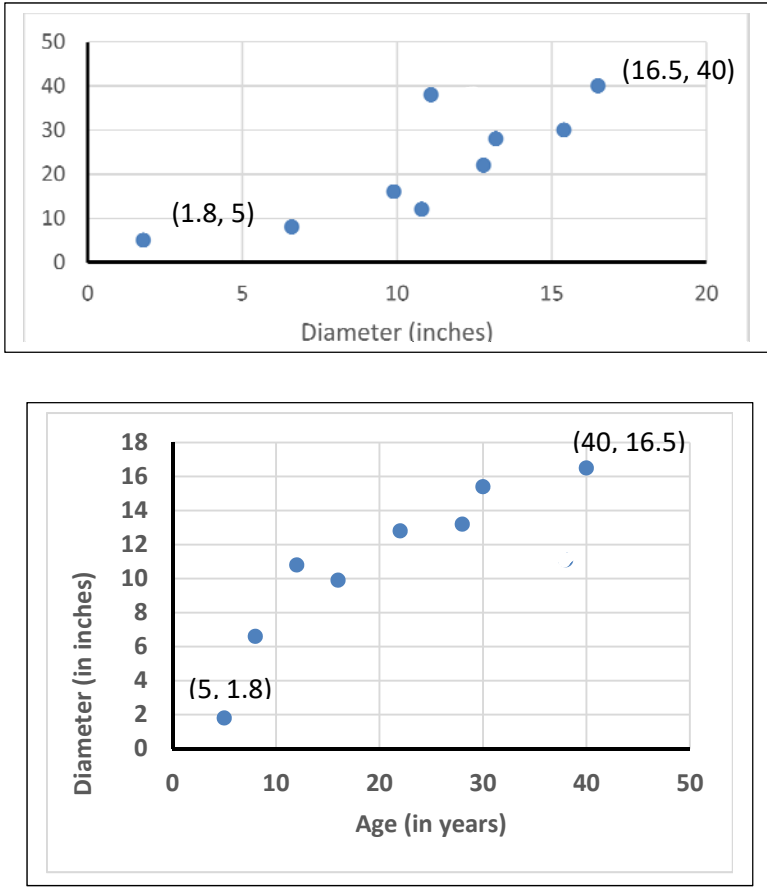
Find, correct to 4 decimal places, the product moment correlation coefficient between

- (A) t and D^2 ,
 (B) $\ln t$ and D .

Explain which of $t = a + bD^2$ and $t = ae^{bD}$ best models the age of this species of trees based on the given data.

- (iv) The forester wants to estimate the diameter of a tree given its age. Using a suitable regression line, find the required estimate of a tree that is 50 years old. Comment on the reliability of your estimate.

Explain why neither the regression line of t on D^2 nor the regression line of $\ln t$ on D should be used.

<p>(i) [2]</p>	 <p>The top scatter plot shows Diameter (inches) on the y-axis (0 to 50) and Age (in years) on the x-axis (0 to 20). Two points are explicitly labeled: (1.8, 5) and (16.5, 40). Other points are approximately at (2, 10), (7, 8), (10, 15), (11, 12), (13, 22), (14, 28), and (17, 30).</p> <p>The bottom scatter plot shows Diameter (in inches) on the y-axis (0 to 18) and Age (in years) on the x-axis (0 to 50). Two points are explicitly labeled: (5, 1.8) and (40, 16.5). Other points are approximately at (8, 6.5), (12, 10.5), (15, 9.5), (22, 12.5), (28, 13.5), and (32, 15.5).</p>	<p>Use ruler to draw axes. Label axes, origin.</p> <p>Ensure graph is of reasonable size.</p> <p>Indicate the data range clearly.</p>
<p>(ii) [2]</p>	<p>From GC, the product moment correlation coefficient between D and t is $r = 0.9146$ (4 d.p.)</p> <p>Since r is close to 1 and from the scatter diagram a positive linear correlation between D and t can be seen, a linear model is appropriate.</p> <p>Alternatively Although r is close to 1, scatter diagram suggests that as t increases, D is increasing at a slower rate, so a non-linear model might be more appropriate.</p>	<p>4 decimal places is demanded in the question.</p>
<p>(iii) [2]</p>	<p>From GC, the product moment correlation coefficient between D^2 and t is $r = 0.9689$ (4 d.p.)</p> <p>From GC, the product moment correlation coefficient between D and $\ln t$ is $r = 0.9747$ (4 d.p.)</p> <p>The $t = ae^{bD}$ provides a better model as its product moment correlation coefficient is closer to 1.</p>	<p>4 decimal places is demanded in the question.</p>
<p>(v) [4]</p>	<p>From GC, the regression line of Diameter, D, on $\ln(\text{age})$, $\ln t$, is $D = -7.642653677 + 6.595868978 \ln t$.</p> <p>$t = 50 \Rightarrow \ln t = 3.9120$</p> <p>$D = 18.161$ (5sf) = 18.2 inches (1 d.p.)</p> <p>The estimated diameter of a 50 year-old tree is 18.2 inches (1 d.p.)</p> <p>As the value of $t = 50$ is outside the data range, the linear model may no longer be suitable. Hence the estimate is not reliable. To estimate D given t, we would need t, the age of the tree, to be the independent variable.</p>	<p>Use at least 5 s.f. for the intermediate working and express final answer in 3 s.f. for non-exact answer (unless specified otherwise).</p>

10 Amy has four identical star shaped ornaments and six identical heart shaped ornaments.

- (a) Find the number of ways in which Amy can arrange the ten ornaments in a line. [1]

The star shaped ornaments are coloured Red, Green, Yellow and Purple, and the heart shaped ornaments are then coloured Red, Green, Yellow, Purple, Black and White.

- (b) Find the number of ways in which Amy can arrange the ten ornaments in a line such that exactly five heart shaped ornaments are next to each other. [3]

- (c) Amy then decides to arrange the ten ornaments in a circular manner. Find the number of ways in which all ornaments of the same colour are next to each other. [2]

- (d) Amy randomly distributes the ten ornaments into one group of four and two groups of three.

- (i) Show that the probability that the black and white ornaments are in the same group is $\frac{4}{15}$. [3]

- (ii) Find the probability that there are at least two heart shaped ornaments in the group of four given that the black and white ornaments are in the same group. [3]

<p>(a) [1]</p>	<p>Number of ways = $\frac{10!}{4!6!}$ or ${}^{10}C_4 = 210$</p>	<p>Use GC carefully to find values.</p>
<p>(b) [3]</p>	<p>In order for exactly 5 hearts to be together, the remaining single heart must be separated from the group of 5 hearts.</p> <p>No. of ways to choose and arrange the 5 hearts in the box = $\binom{6}{5} \times 5!$</p> <p>No. of ways to arrange the 4 stars = 4!</p> <p>No. of ways to slot the group of 5 hearts and the single heart into separate slots = $\binom{5}{2} \times 2!$</p> <p>Required number of ways = $4! \times \binom{6}{5} \times 5! \times \binom{5}{2} \times 2! = 345600$</p> <p>Or $4! \times {}^6P_5 \times {}^5P_2 = 345600$</p> <p>Alternative Solutions :</p> <p>Arrange group of 5 hearts with 4 stars, then slot in last heart :</p> $\binom{6}{5} \times 5! \times 5! \times \binom{4}{1}$ <p>Total (for group of 5 hearts + 4 stars + last heart) – 6 hearts together : $\left(\binom{6}{5} 5! \right) 6! - 6! 5! 2!$</p>	<p>Explain your work carefully.</p> <p>Incorrect answers with no explanation warrant little or no marks.</p>

<p>(c) [2]</p>	<p>2 Red, 2 Green, 2 Yellow, 2 Purple, 1 Black and 1 White</p> <p>Number of ways all the ornaments of the same colours are next to each other, arranged in a circular manner $= (6 - 1)! \times 2^4 = 1920$</p>	<p>Remember to arrange all 4 groups.</p>																
<p>(d)(i) [3]</p>	<p>Number of ways to select the three groups $= \frac{\binom{10}{4} \binom{6}{3} \binom{3}{3}}{2!} = 2100$</p> <p>Number of ways to select when black and white are in the same group $=$ Number of ways when black and white are in group of 4 + number of ways when black and white are in a group of 3</p> $= \frac{\binom{8}{2} \binom{6}{3} \binom{3}{3}}{2!} + \binom{8}{4} \binom{4}{1} \binom{3}{3} = 560$ <p>Required probability $= \frac{560}{2100} = \frac{4}{15}$</p> <p>Alternative solutions :</p> $\frac{4}{10} \times \frac{3}{9} + 2 \left(\frac{3}{10} \times \frac{2}{9} \right) \quad \text{or} \quad \frac{\binom{4}{2} + 2 \binom{3}{2}}{\binom{10}{2}} \quad \text{or} \quad \frac{\binom{8}{2}}{\binom{10}{4}} + \frac{2 \binom{8}{1}}{\binom{10}{3}}$	<p>Candidates to know alternative solutions.</p> <p>In a “show question”, more explicit working is required.</p>																
<p>(d)(ii) [3]</p>	<p>Let A be the event that at least 2 heart shaped ornaments are in the group of 4. Let B be the event that the black and white ornaments are in the same group.</p> $P(A B) = 1 - P(A' B) = \frac{n(B) - n(A' \cap B)}{n(B)} \quad \text{or} \quad 1 - \frac{P(A' \cap B)}{P(B)}$ <p>The cases for $A' \cap B$ are as follows:</p> <table border="1" data-bbox="309 1384 1121 1794"> <thead> <tr> <th>Group of 4</th> <th>Group of 3</th> <th>Group of 3</th> <th>Number of Ways</th> </tr> </thead> <tbody> <tr> <td>3 stars with a Red or Green or Yellow or Purple heart</td> <td>Black and white and 1 other</td> <td>The remaining</td> <td>$\binom{4}{3} \binom{4}{1} \binom{4}{1} \binom{3}{3} = 64$</td> </tr> <tr> <td>4 stars</td> <td>Black and white and 1 other</td> <td>The remaining</td> <td>$\binom{4}{4} \binom{4}{1} \binom{3}{3} = 4$</td> </tr> <tr> <td></td> <td></td> <td></td> <td>Total = 68</td> </tr> </tbody> </table> $P(A B) = 1 - \frac{68}{2100} = 1 - \frac{17}{525} \quad \text{or} \quad \frac{560 - 68}{560} = \frac{492}{560}$ $= \frac{123}{140} \quad \text{or} \quad 0.879 \text{ (3s.f., } 0.87857 \text{ (5s.f.))}$	Group of 4	Group of 3	Group of 3	Number of Ways	3 stars with a Red or Green or Yellow or Purple heart	Black and white and 1 other	The remaining	$\binom{4}{3} \binom{4}{1} \binom{4}{1} \binom{3}{3} = 64$	4 stars	Black and white and 1 other	The remaining	$\binom{4}{4} \binom{4}{1} \binom{3}{3} = 4$				Total = 68	<p>Consider cases carefully</p>
Group of 4	Group of 3	Group of 3	Number of Ways															
3 stars with a Red or Green or Yellow or Purple heart	Black and white and 1 other	The remaining	$\binom{4}{3} \binom{4}{1} \binom{4}{1} \binom{3}{3} = 64$															
4 stars	Black and white and 1 other	The remaining	$\binom{4}{4} \binom{4}{1} \binom{3}{3} = 4$															
			Total = 68															

Alternatively, have to consider 4 cases.			
Group of 4	Group of 3	Group of 3	Number of Ways
Black and white and 2 others	Any remaining 3	The remaining	$\binom{8}{2}\binom{6}{3}\binom{3}{3} / 2$ $= 280$
2 hearts (not black and white) + 2 stars	Black and white and 1 other	The remaining	$\binom{4}{2}\binom{4}{2}\binom{4}{1}\binom{3}{3} = 144$
3 hearts (not black and white) + 1 stars			$\binom{4}{3}\binom{4}{1}\binom{4}{1}\binom{3}{3} = 64$
4 hearts (not black and white)			$\binom{4}{4}\binom{4}{1}\binom{3}{3} = 4$
			Total = 492
$P(A B) = \frac{492}{560}$ $= \frac{123}{140} \text{ or } 0.879 \text{ (3s.f., } 0.87857\text{(5s.f.))}$			

11 The salad bar at a restaurant has n separate bowls containing different ingredients. Each customer to the restaurant is allowed only one visit to the salad bar. Jon visits the salad bar and makes a selection. At each bowl, he can take some or none of the contents, and he does not return to the bowl again. As the salad bar may not serve the same ingredients everyday, Jon does not know what ingredients will be served at each visit. On average, the probability that he takes some of the contents from each bowl is 0.4. For each visit to the salad bar, the number of different ingredients Jon takes is the random variable X .

- (i) State, in the context of this question, an assumption needed to model X by a binomial distribution, and explain why the assumption may not hold. [2]

Assume now that X has the distribution $B(n, 0.4)$.

- (ii) Jon visits the salad bar on a randomly chosen day. The probability that Jon takes exactly 7 different ingredients is denoted by P . Determine the value of n that gives the greatest value of P . [2]

Jon's selection on any day is independent of his selection on any other day. During a promotional week, the salad bar serves 6 different ingredients (A, B, C, D, E, F) on Monday and Tuesday, 6 different ingredients (G, H, I, J, K, L) on Wednesday and Thursday, and all 12 different ingredients (A to L) on Friday, Saturday and Sunday.

- (iii) If Jon visits the salad bar on Monday and Thursday of the promotional week, find the probability that he takes at least 3 different ingredients on each day. [2]

- (iv) If Jon visits the salad bar on Saturday of the promotional week, find the probability that he takes at least 6 different ingredients. [1]
- (v) Explain in context why the answer to part (iv) is greater than the answer to part (iii). [1]

After the promotional week, the restaurant decides to charge customers \$3 for a visit to the salad bar, and an additional \$2 if they take more than $\frac{n}{2}$ different ingredients. Kai visits the salad bar after the promotional week and makes a selection. The number of different ingredients Kai takes is the random variable K . It is given that

$$P(K \leq k) = \left(\frac{k}{n}\right)^2, \quad k = 0, 1, 2, \dots, n.$$

- (vi) If Kai visits the salad bar on a particular day after the promotional week when $n = 9$, find the expected amount Kai pays for that particular visit. [3]

Kai visits the salad bar on a randomly chosen day after the promotional week.

- (vii) Show that $P(K = k) = \frac{2k-1}{n^2}, k = 1, 2, \dots, n.$ [1]

- (viii) Find, in terms of n , the expected number of different ingredients Kai takes on that day.

[You may use the result $\sum_{r=1}^n r^2 = \frac{n}{6}(n+1)(2n+1).$] [2]

<p>(i) [2]</p>	<p>The probability that Jon takes the ingredients from each bowl is constant at 0.4. However, the probability may not be constant as Jon may prefer certain ingredients and be more likely to take the ingredients from some bowls than others. OR Jon takes the ingredients from each bowl independently of other bowls. However, Jon may not take the ingredients independently as he may consider that some ingredients go well together while others do not.</p>	<p>Correct phrasing in context is required, eg Probabilities are NOT independent.</p>								
<p>(ii) [2]</p>	<p>$X \sim B(n, 0.4)$ $P = {}^n C_7 (0.4)^7 (0.6)^{n-7}$ Find n such that P has the greatest value.</p> <table border="1" data-bbox="284 1585 775 1742"> <thead> <tr> <th>n</th> <th>P</th> </tr> </thead> <tbody> <tr> <td>16</td> <td>0.18889</td> </tr> <tr> <td>17</td> <td>0.19267</td> </tr> <tr> <td>18</td> <td>0.18916</td> </tr> </tbody> </table> <p>From GC, $n = 17$. Alternatively,</p>	n	P	16	0.18889	17	0.19267	18	0.18916	
n	P									
16	0.18889									
17	0.19267									
18	0.18916									

	$P(n) \geq P(n-1)$ ${}^n C_7 (0.4)^7 (0.6)^{n-7} \geq {}^{n-1} C_7 (0.4)^7 (0.6)^{n-1-7}$ $\frac{n!}{7!(n-7)!} 0.6 \geq \frac{(n-1)!}{7!(n-1-7)!}$ $\left(\frac{n}{n-7}\right) 0.6 \geq 1$ $0.6n \geq n-7$ $n \leq \frac{35}{2}$ <p>P has greatest value when $n = 17$</p>
(iii) [2]	<p>When $n = 6$, $X \sim B(6, 0.4)$.</p> <p>P(at least 3 different ingredients each on Mon and Thur)</p> $= [P(X \geq 3)]^2 = [1 - P(X \leq 2)]^2 = 0.208 \text{ (3 s.f.)}$
(iv) [1]	<p>When $n = 12$, $X \sim B(12, 0.4)$.</p> <p>P(at least 6 different ingredients on Sat) = $P(X \geq 6) = 1 - P(X \leq 5) = 0.335$ (3 s.f.)</p>
(v) [1]	<p>Part (iv) includes the cases in part (iii) as well as other cases. For example, the case of Jon taking exactly 2 different ingredients from A to F and exactly 4 different ingredients from G to L is included in part (iv) but not in part (iii).</p>
(vi) [3]	$P(K > 4.5) = P(K \geq 5) = 1 - P(K \leq 4) = 1 - \left(\frac{4}{9}\right)^2 = 1 - \frac{16}{81} = \frac{65}{81}$ <p>Expected amount Kai pays = $\\$ \left[3 + 2 \left(\frac{65}{81} \right) \right] = \\4.60 (to nearest cent)</p> <p>OR alternatively,</p> $\$ \left[3 \left(\frac{16}{81} \right) + 5 \left(\frac{65}{81} \right) \right] = \$4.60 \text{ (to nearest cent)}$
(vii) [1]	$P(K = k) = P(K \leq k) - P(K \leq k-1), \quad k = 1, 2, \dots, n$ $= \left(\frac{k}{n}\right)^2 - \left(\frac{k-1}{n}\right)^2$ $= \frac{k^2 - (k^2 - 2k + 1)}{n^2}$ $= \frac{2k-1}{n^2} \text{ (shown)}$
(viii) [2]	<p>Expected number of different ingredients Kai takes</p> $= \sum_{k=0}^n k P(K = k)$ $= \frac{1}{n^2} \sum_{k=1}^n (2k^2 - k)$ $= \frac{1}{n^2} \left[\frac{2n(n+1)(2n+1)}{6} - \frac{n(n+1)}{2} \right]$ $= \frac{(n+1)(4n-1)}{6n}$